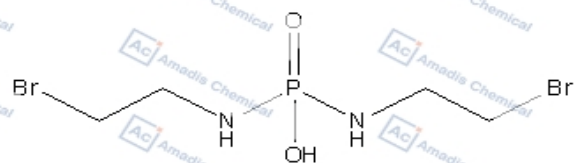




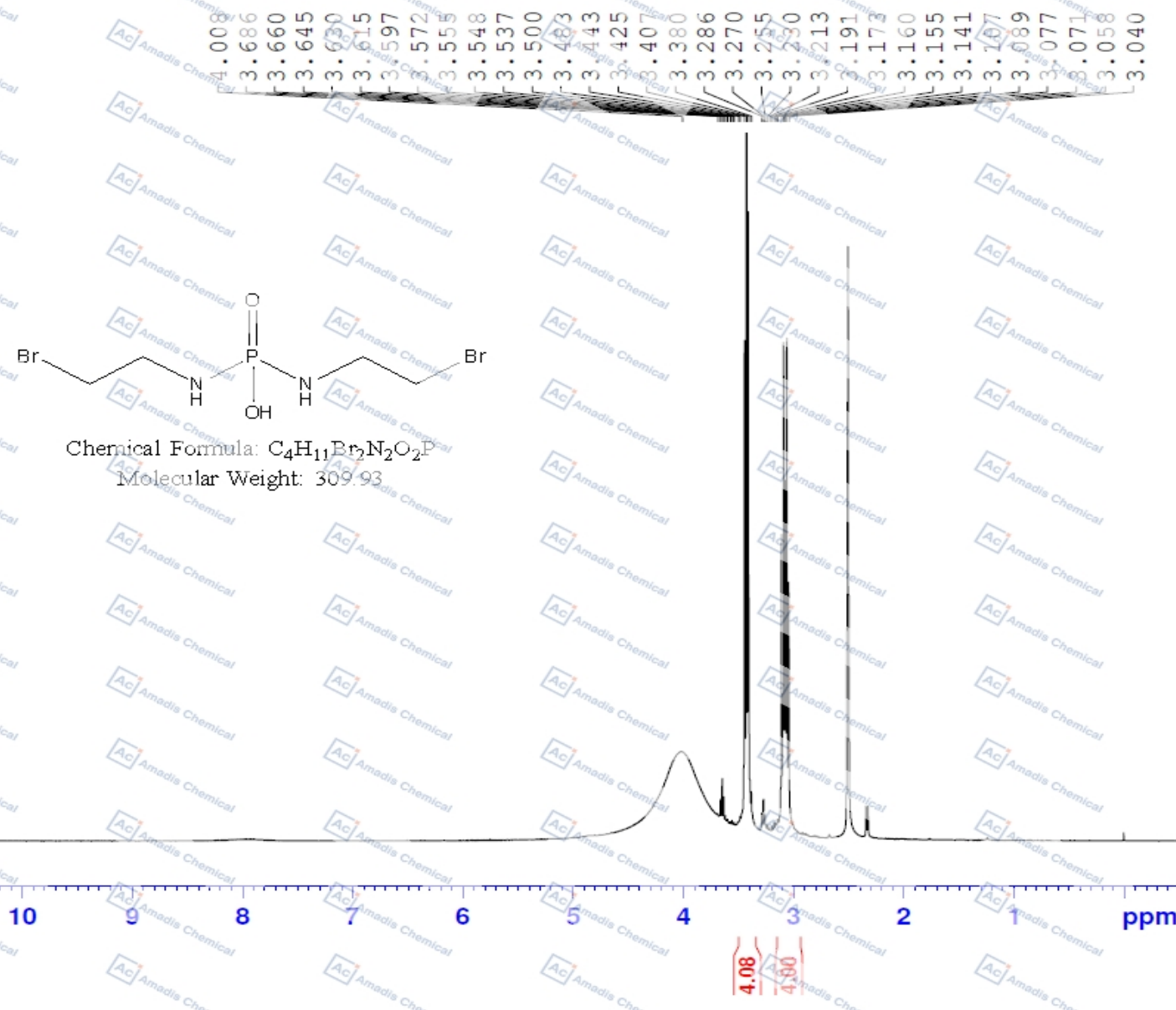
Current Data Parameters
NAME 0903-5429
EXPNO 10
PROCNO 1

F2 - Acquisition Parameters
Date_ 20250904
Time 12:24 h
INSTRUM spect
PROBHD z116098_0490 (1H
PULPROG zgpg30
TD 65536
SOLVENT DMSO
NS 16
DS 2
SWH 8012.890 Hz
FIDRES 0.244532 Hz
AQ 4.0894465 sec
RG 111.92
DN 62.400 usec
DE 6.50 usec
TE 299.5 K
D1 1.0000000 sec
TS0
SFO1 400.1524709 MHz
NUC1 1H
P1 10.00 usec
PL1 15.5930000 W

F2 - Processing parameters
SI 65536
SF 400.1500000 MHz
WDW EM
SSB 0
LB 0.30 Hz
GB 0
PC 1.00



Chemical Formula: $C_4H_{11}Br_2N_2O_2P$
Molecular Weight: 309.93



*For laboratory or manufacturing use only, not for drug, food and household use.