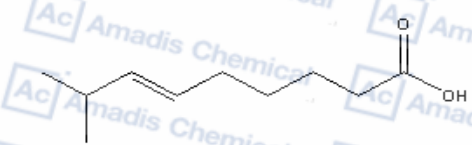




7.284  
5.436  
5.421  
5.397  
5.382  
5.372  
5.358  
5.343  
5.334  
5.319  
5.304  
5.229  
5.215  
2.397  
2.390  
2.371  
2.360  
2.352  
2.269  
2.252  
2.236  
2.219  
2.088  
2.074  
2.040  
2.023  
2.006  
1.988  
1.693  
1.674  
1.655  
1.636  
1.617  
1.460  
1.440  
1.421  
1.402  
1.384  
0.985  
0.968  
0.949  
0.018

Current Data Parameters  
NAME Amadis chemical  
EXPNO 563  
PROCNO 1  
F2 - Acquisition Parameters  
Date\_ 20191125  
Time 10.06 h  
INSTRUM spect  
PROBHD zg30  
PULPROG zg30  
TD 32768  
SOLVENT CDC13  
NS 8  
DS 0  
SWH 8012.820 Hz  
FIDRES 0.489064 Hz  
AQ 2.0447233 sec  
RG 89.42  
DW 62.400 usec  
DE 6.50 usec  
TE 294.2 K  
D1 2.00000000 sec  
TD0 1  
SF01 400.1330810 MHz  
NUC1 1H  
P1 3.33 usec  
PLW1 16.66200066 W  
F2 - Processing parameters  
SI 16384  
SF 400.1300000 MHz  
WDW EM  
SSB 0  
LB 0 Hz  
GB 0  
PC 1.00



Chemical Formula: C<sub>11</sub>H<sub>18</sub>O<sub>2</sub>  
Molecular Weight: 170.25

