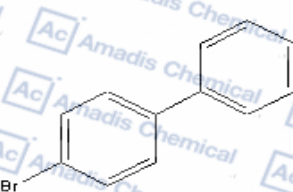




7.609
7.600
7.596
7.588
7.579
7.502
7.498
7.480
7.459
7.418
7.400
7.382
7.287

1.572
1.281

0.042



Chemical Formula: C₆H₅Br
Molecular Weight: 233.11

Current Data Parameters
NAME Amadis_chemical
EXPNO 495
PROCNO 1

F2 - Acquisition Parameters
Date_ 20200511
Time 10.36
INSTRUM spect
PROBHD 5 mm PABBO BB-
PULPROG zg30
TD 32768
SOLVENT DMSO
NS 5
DS 0
SWH 9980.040 Hz
FIDRES 0.304567 Hz
AQ 1.6417269 sec
RG 32
DW 50.100 usec
DE 6.00 usec
TE 297.0 K
D1 2.0000000 sec
TD0 1

CHANNEL f1
NUC1 1H
P1 7.60 usec
PL1 -3.00 dB
SF01 400.2030815 MHz

F2 - Processing parameters
SI 16384
SF 400.1999959 MHz
WDW EM
SSB 0
LB 0.00 Hz
GB 0
PC 1.00



3.95
3.96
1.00

ppm

*For R&D use only