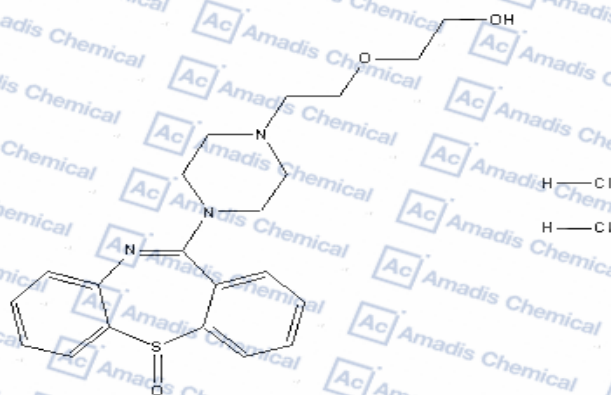




7.833  
7.818  
7.812  
7.798  
7.792  
7.784  
7.777  
7.758  
7.738  
7.639  
7.619  
7.606  
4.496  
4.494  
4.477  
4.474  
4.379  
4.375  
4.359  
4.357  
4.341  
4.338  
4.275  
4.256  
4.236  
4.214  
4.066  
4.046  
3.880  
3.844  
3.550  
3.538  
3.526  
3.500  
3.489  
3.364  
3.511  
2.508  
2.504  
0.003

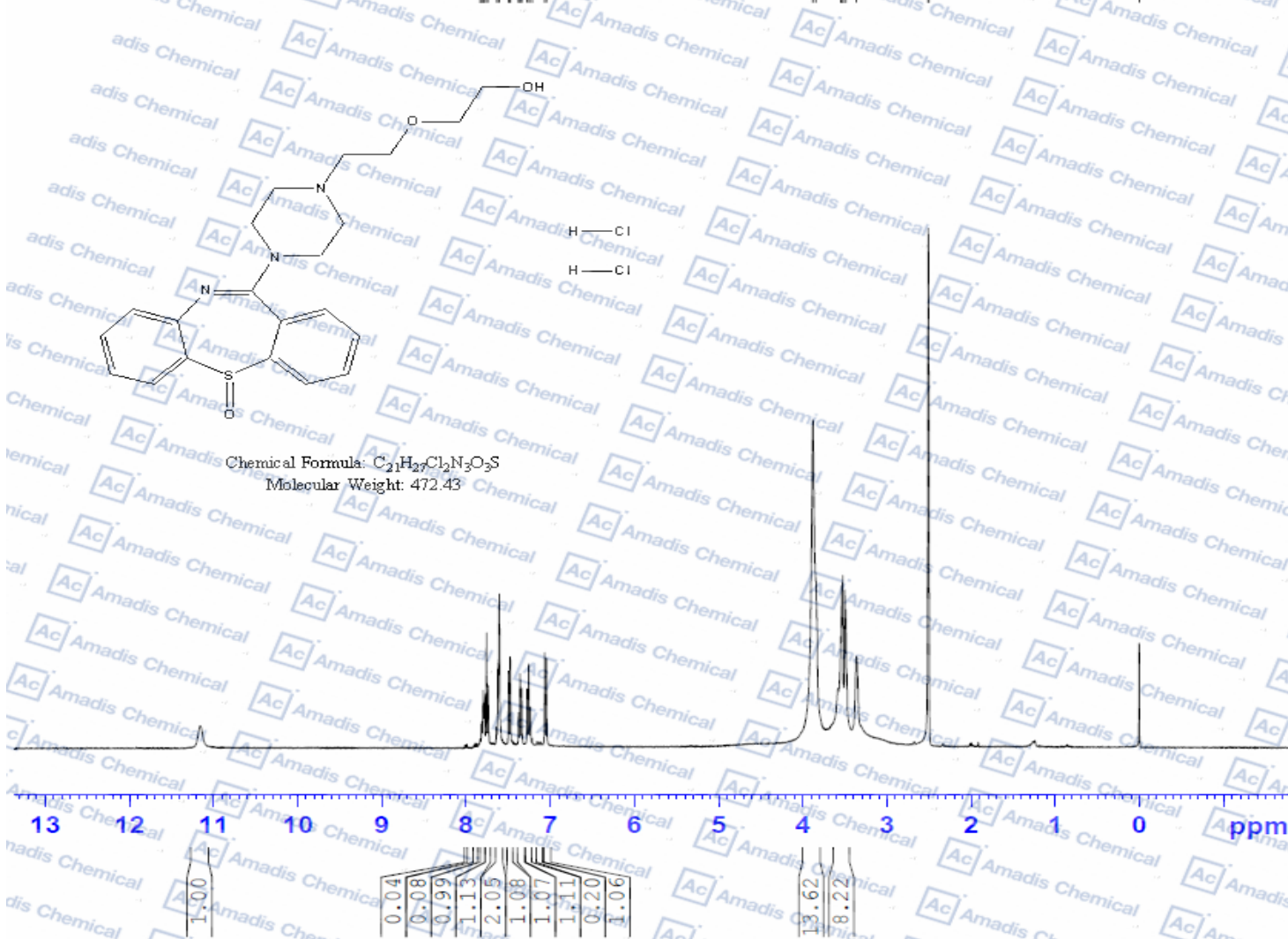


Chemical Formula:  $C_{21}H_{27}Cl_2N_3O_3S$   
Molecular Weight: 472.43

Current Data Parameters  
NAME Amadis chemical  
EXPNO 38  
PROCNO 1

F2 - Acquisition Parameters  
Date\_ 20200721  
Time 10.38 h  
INSTRUM spect  
PROBHD 2116098\_0513 (zg30)  
PULPROG zg30  
TD 32768  
SOLVENT DMSO  
NS 24  
DS 0  
SWH 10000.000 Hz  
FIDRES 0.610352 Hz  
AQ 1.6384000 sec  
RG 198.04  
DW 50.000 usec  
DE 6.50 usec  
TE 296.3 K  
D1 2.00000000 sec  
TD0 1  
SFO1 400.1330810 MHz  
NUC1 1H  
P1 5.00 usec  
PLW1 16.66200068 W

F2 - Processing parameters  
SI 16384  
SF 400.1300000 MHz  
WDW EM  
SSB 0  
LB 0 Hz  
GB 0  
PC 1.00



\*For R&D use only