

PROTON DMSO D:<\\ nmr1 31

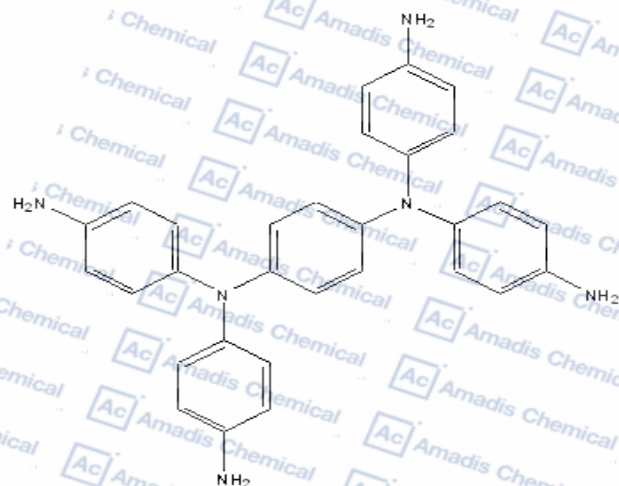


Current Data Parameters
NAME Amadis chemical
EXPNO 10
PROCNO 1

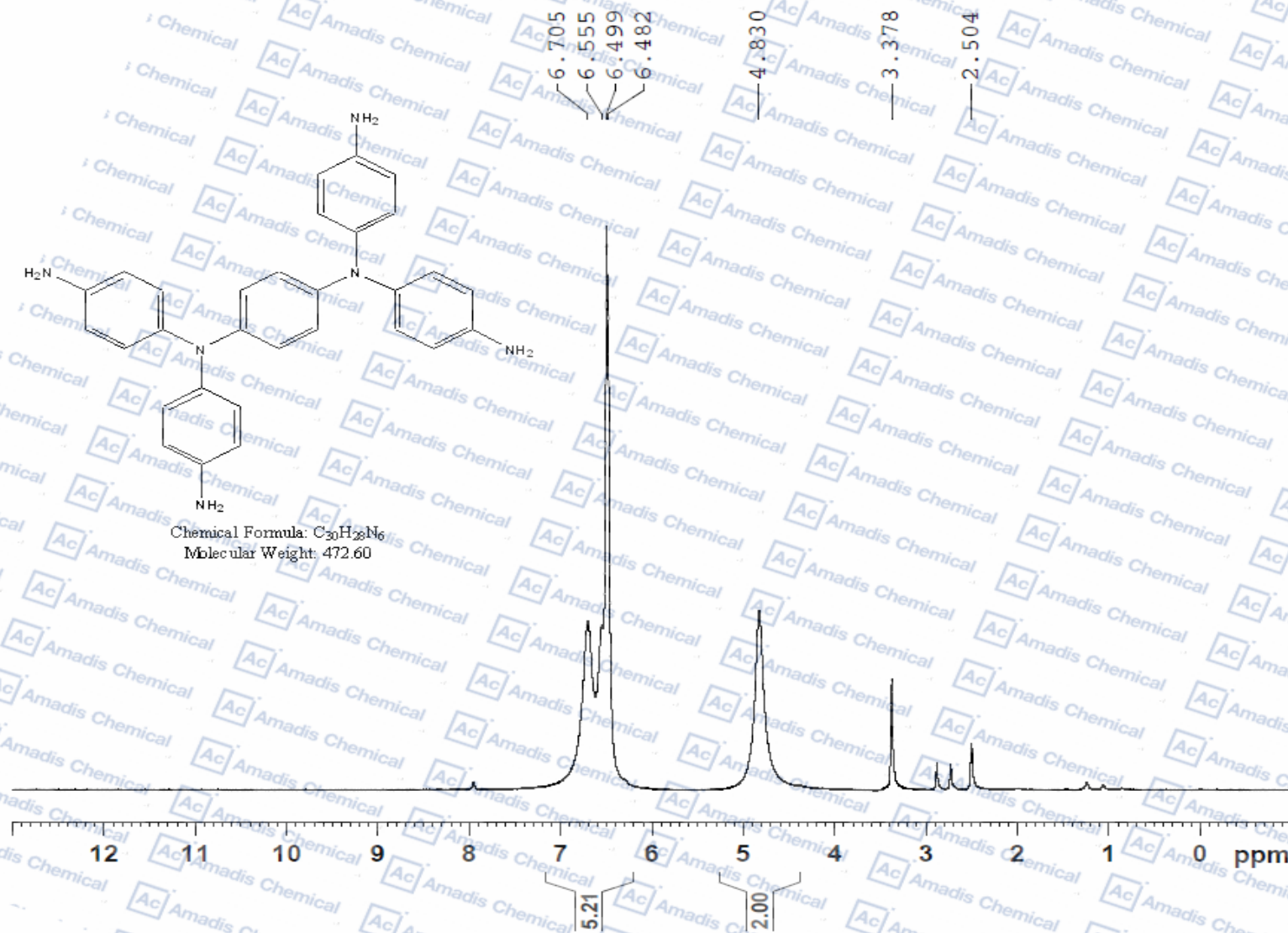
F2 - Acquisition Parameters
Date_ 20210325
Time 13:59
INSTRUM spect
PROBHD 5 mm PABBO BB-
PULPROG zg30
TD 65536
SOLVENT DMSO
NS 16
DS 2
SWH 8012.820 Hz
FIDRES 0.122266 Hz
AQ 4.0894465 sec
RG 101
DW 62.400 usec
DE 6.50 usec
TE 4839.0 K
D1 1.00000000 sec
TD0 1

===== CHANNEL f1 =====
SFO1 400.1324710 MHz
NUC1 1H
P1 14.00 usec
PLW1 20.0000000 W

F2 - Processing parameters
SI 65536
SF 400.1300000 MHz
WDW no
SSB 0
LB 0 Hz
GB 0
PC 1.00



Chemical Formula: C₁₂H₁₀N₂O
Molecular Weight: 472.60



*For R&D use only