



Current Data Parameters
NAME Amadis chemical
EXPNO 10
PROCNO 1

F2 - Acquisition Parameters
Date 20211109
Time 11.27
INSTRUM spect
PROBHD 5 mm PABBO BB
PULPROG zg30
TD 65536
SOLVENT DMSO
NS 16
DS 2
SWH 8012.820 Hz
FIDRES 0.122266 Hz
AQ 4.0894465 sec
RG 114
DW 62.400 usec
DE 6.50 usec
TE 474.7 K
D1 1.00000000 sec
TDO 1

==== CHANNEL f1 =====
SF01 400.1324710 MHz
NUC1 1H
P1 14.00 usec
PLW1 20.00000000 W

F2 - Processing parameters
SI 65536
SE 400.1300000 MHz
WDW no
SSB 0
LB 0 Hz
GB 0
PC 1.00

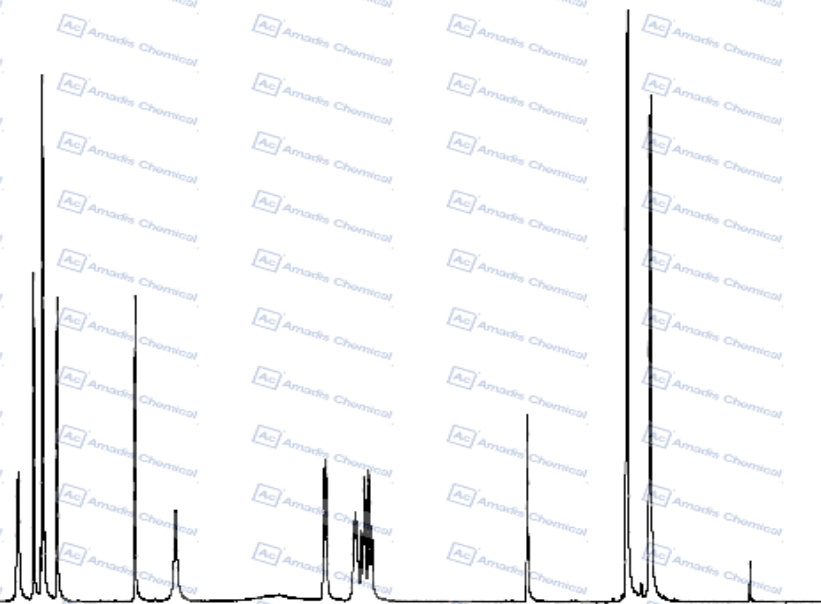
PROTON DMSO D:\ nmr1 13

13.080



Chemical Formula: C₁₉H₁₉ClN₆O₂
Molecular Weight: 398.85

8.270
8.249
8.084
7.984
7.961
7.817
6.938
6.481
4.798
4.782
4.471
4.455
4.438
4.386
4.353
4.335
4.302
4.289
4.268
4.255
2.507
1.390
1.374
1.130
1.114



15 14 13 12 11 10 9 8 7 6 5 4 3 2 1 ppm

*For R&D use only