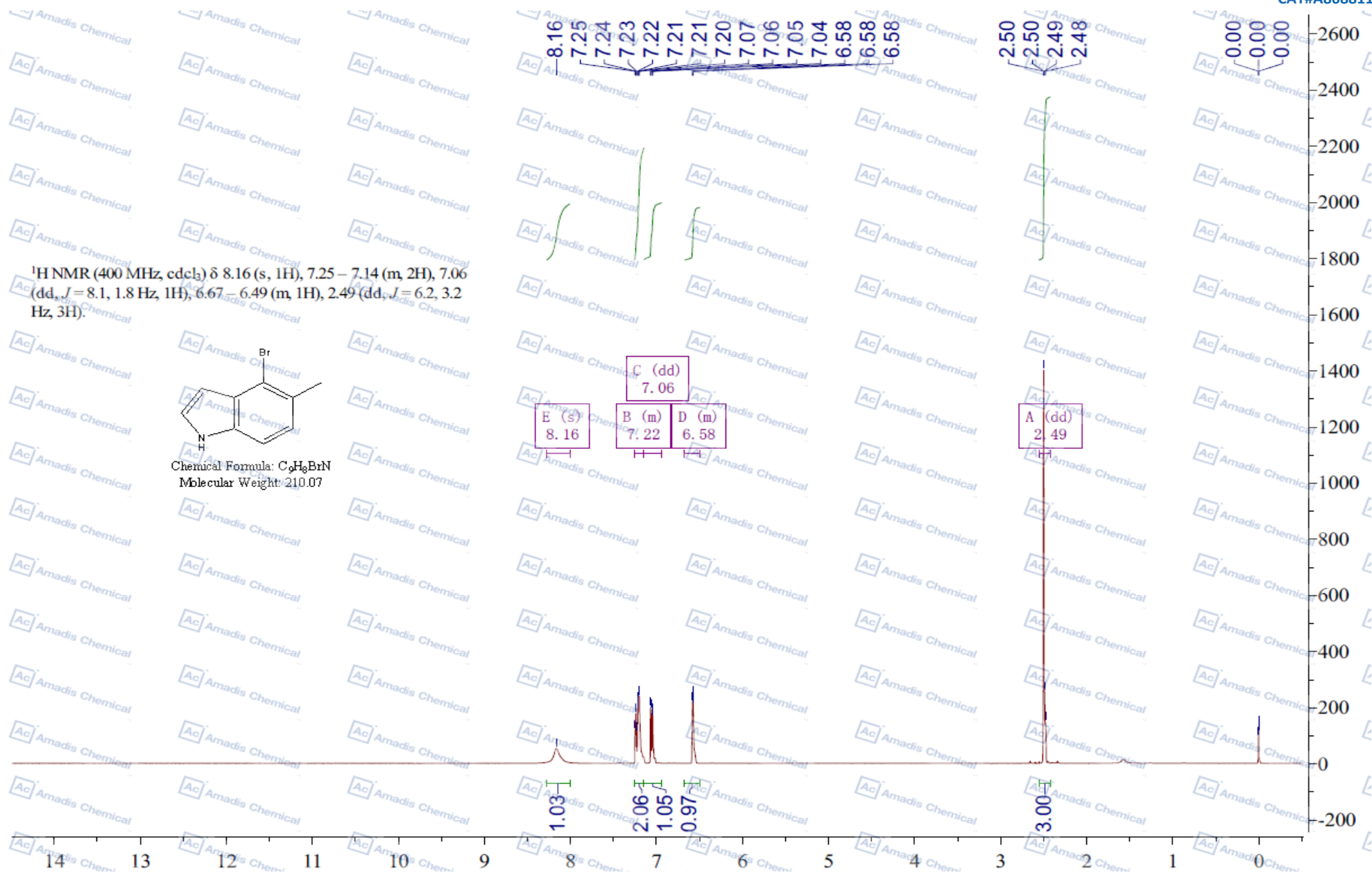
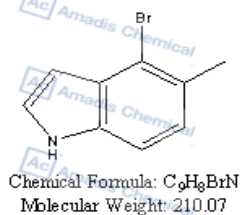


¹H NMR (400 MHz, cdcl₃) δ 8.16 (s, 1H), 7.25 – 7.14 (m, 2H), 7.06 (dd, *J* = 8.1, 1.8 Hz, 1H), 6.67 – 6.49 (m, 1H), 2.49 (dd, *J* = 6.2, 3.2 Hz, 3H).



*For R&D use only