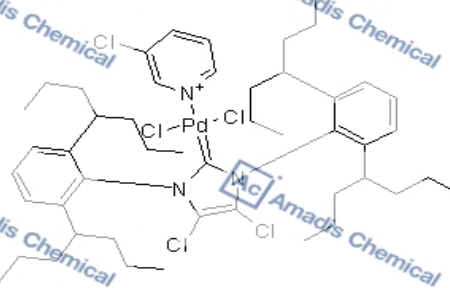
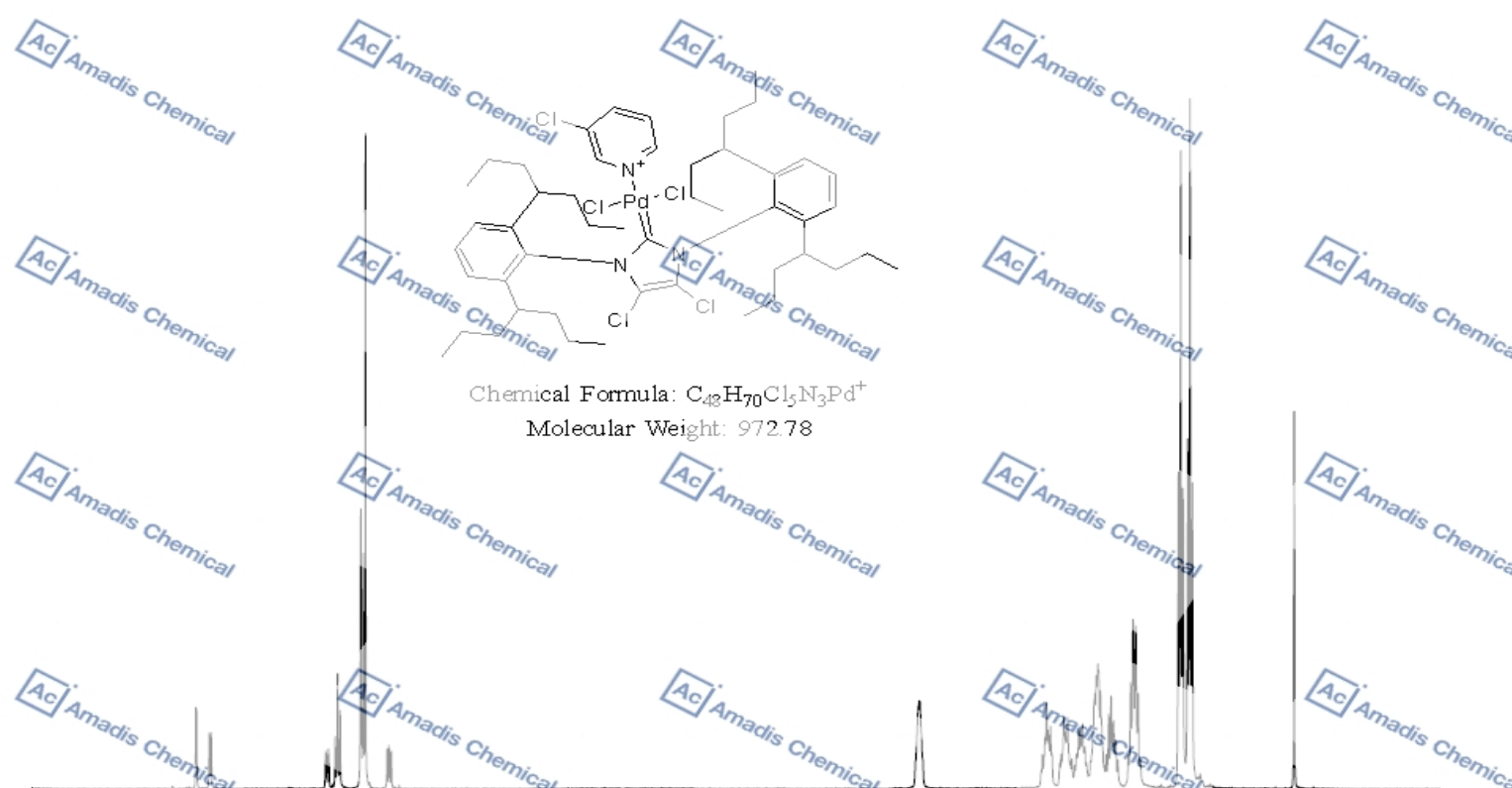




8.111
8.113
8.513
7.499
7.529
7.509
7.490
7.330
7.310
7.292
2.166
2.166
2.958
2.969
1.958
1.938
1.835
1.825
1.804
1.799
1.888
1.888
1.598
1.592
1.581
1.569
1.563
1.549
1.484
1.484
1.312
1.312
2.933
1.273
1.254
0.939
0.921
0.903
0.866
0.848
0.830
0.033



Chemical Formula: $C_{43}H_{70}Cl_5N_3Pd^+$
Molecular Weight: 972.78

Current Data Parameters
NAME Amadis chemical
EXPNO 679
PROCNO 1

F2 - Acquisition Parameters
Date_ 20231107
Time 14.12 h
INSTRUM spect
PROBHD Z116098_0513 (
PULPROG zg30
TD 32768
SOLVENT CDCl3
NS 8
DS 0
SWH 8012.820 Hz
FIDRES 0.489084 Hz
AQ 2.0447233 sec
RG 198.04
DW 62.400 usec
DE 6.50 usec
TE 294.6 K
D1 2.00000000 sec
TD0 1
SFO1 400.1330810 MHz
NUC1 1H
P1 5.99 usec
PLW1 16.66200066 W

F2 - Processing parameters
SI 16384
SF 400.1299963 MHz
WDW EM
SSB 0
LB 0 Hz
GB 0
EC 1.00

*For laboratory or manufacturing use only, not for drug, food and household use.