



7.475
7.457
7.418
7.410
7.386
7.375
7.370
7.353
7.337
7.217
7.197
7.185
7.166
7.159
7.159
6.426
6.410
6.223
6.198
6.191
6.166
5.758
5.739
5.141
5.109
5.087
5.056
4.313
4.297
4.242
4.227
4.214
4.210
4.197
4.016
4.008
4.002
3.986
3.960
3.942
3.346
2.507
1.286
1.268
1.249

Current Data Parameters
NAME Amadis Chemical
EXPNO 10
PROCNO 1

F2 - Acquisition Parameters

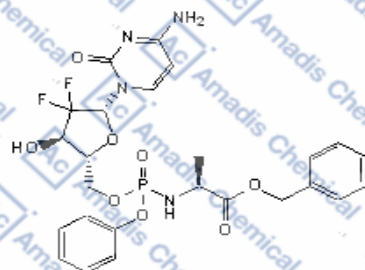
Date_ 20181102
Time 14.33
INSTRUM spect
PROBHD 5 mm PABBO BB
PULPROG zg30
TD 65536
SOLVENT DMSO
NS 16
DS 2
SWH 8012.820 Hz
FIDRES 0.122266 Hz
AQ 4.0894465 sec
RG 114
DW 62.400 usec
DE 6.50 usec
TE 486.2 K
D1 1.0000000 sec
TD0 1

===== CHANNEL f1 =====

SFO1 400.1324710 MHz
NUC1 1H
P1 14.00 usec
PLW1 20.00000000 W

F2 - Processing parameters

SI 65536
SF 400.1300000 MHz
WDW no
SSB 0
LB 0 Hz
GB 0
PC 1.00



Chemical Formula: C₂₅H₂₇F₂N₄O₈P
Molecular Weight: 580.48

