

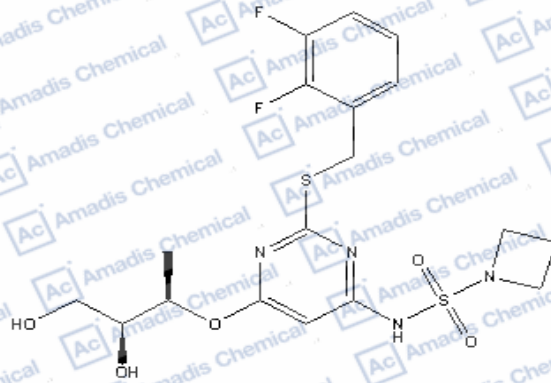
CPD1543-20190318-02-H-20190318



Current Data Parameters

EXPNO 1  
PROCNO 1  
F2 - Acquisition Parameters  
Date\_ 20190318  
Time 12.22  
INSTRUM spect  
PROBHD 5 mm PABBO BB/  
PULPROG zg30  
TD 65536  
SOLVENT DMSO  
NS 16  
DS 2  
SWH 8012.820 Hz  
FIDRES 0.122266 Hz  
AQ 4.0894465 sec  
RG 102133  
DW 62.400 usec  
DE 6.50 usec  
TE 294.4 K  
D1 1.0000000 sec  
TD0 1

==== CHANNEL f1 ====  
SFO1 400.1324710 MHz  
NUC1 1H  
P1 10.00 usec  
PLWI 16.00000000 W  
F2 - Processing parameters  
SI 65536  
SF 400.1300010 MHz  
WDW EM  
SSB 0  
LB 0.30 Hz  
GB 0  
PC 1.00



Chemical Formula: C<sub>18</sub>H<sub>22</sub>F<sub>2</sub>N<sub>4</sub>O<sub>5</sub>S<sub>2</sub>  
Molecular Weight: 476.51

