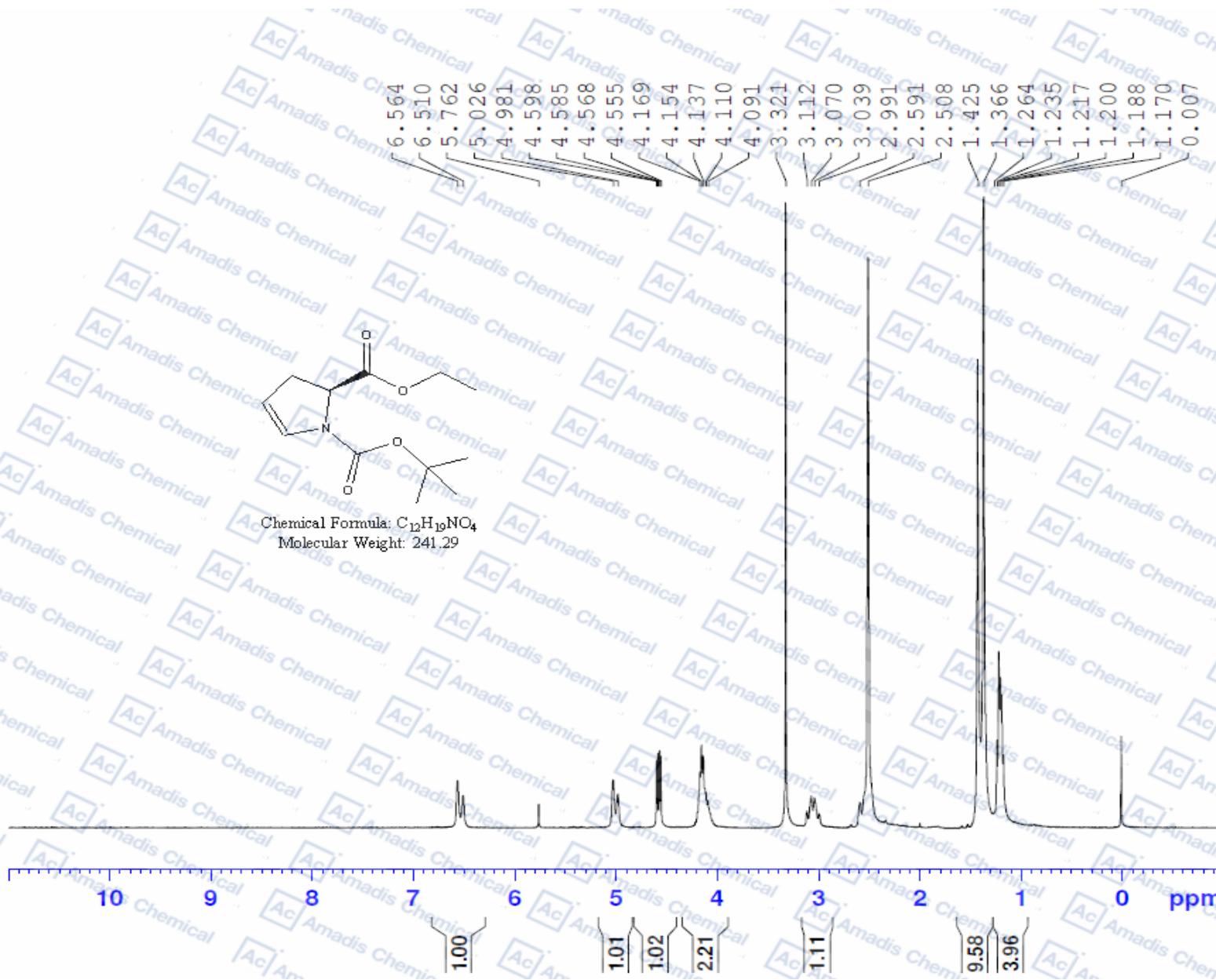


Chemical Formula: C<sub>12</sub>H<sub>19</sub>NO<sub>4</sub>  
Molecular Weight: 241.29



Current Data Parameters

EXPNO 1  
PROCNO 1

F2 Acquisition Parameters

Time 10.33  
INSTRUM spect  
PROBHD 5 mm PABBO BB/  
PULPROG zg30  
TD 65536  
SOLVENT DMSO  
NS 16  
DS 2  
SWH 8012.820 Hz  
FIDRES 0.122266 Hz  
AQ 4.0894465 sec  
RG 159.83  
DW 62.400 usec  
DE 6.50 usec  
TE 298.0 K  
D1 1.00000000 sec  
TD0 1

CHANNEL f1

SFO1 400.1324710 MHz  
NUC1 1H  
P1 8.70 usec  
PLW1 20.00000000 W

F2 Processing parameters

SI 65536  
SF 400.1300000 MHz  
WDW EM  
SSB 0  
LB 0.30 Hz  
GB 0  
EC 1.00