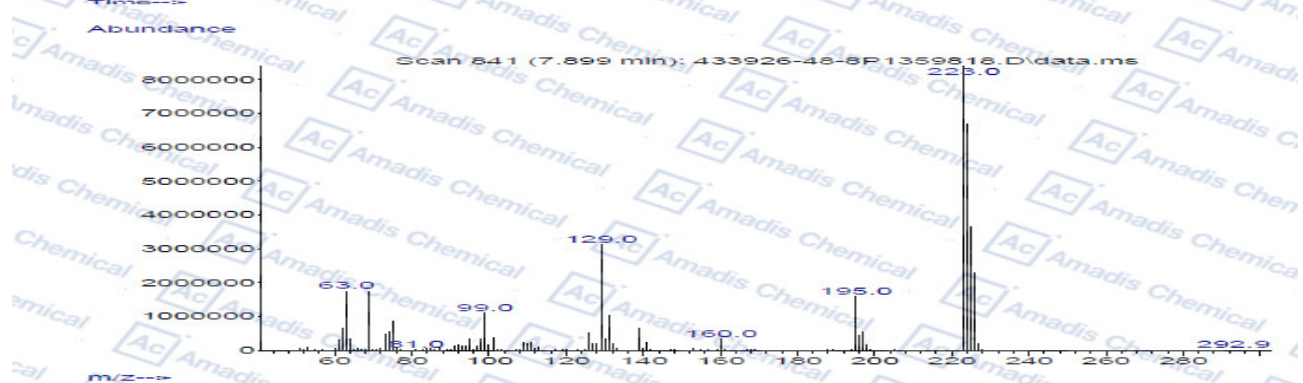
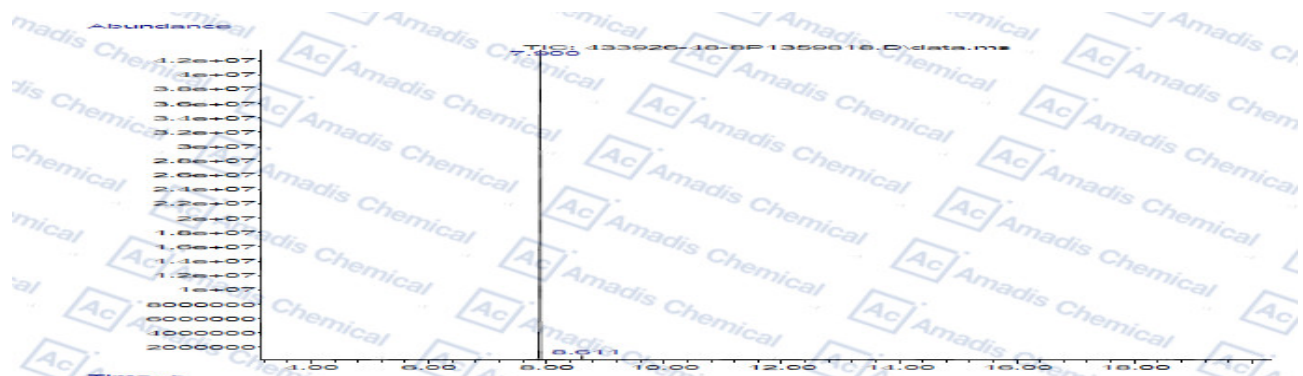


GCMS of 433926-48-8



Signal : TIC: 433926-48-8P1359818.D\data.ms

peak #	R.T. min	first scan	max scan	last scan	PK TY	peak height	area	corr. area	corr. %	% of total
1	7.900	832	841	848	BV	42945973	599994906	100.00%	98.382%	
2	8.611	958	965	973	BB	800575	9868782	1.64%	1.618%	

Sum of corrected areas: 609863688

40-240-3.M Thu Sep 13 09:12:48 2018

*For R&D use only

*if you have any comments and suggestions, please contact us by sales@amadischem.com