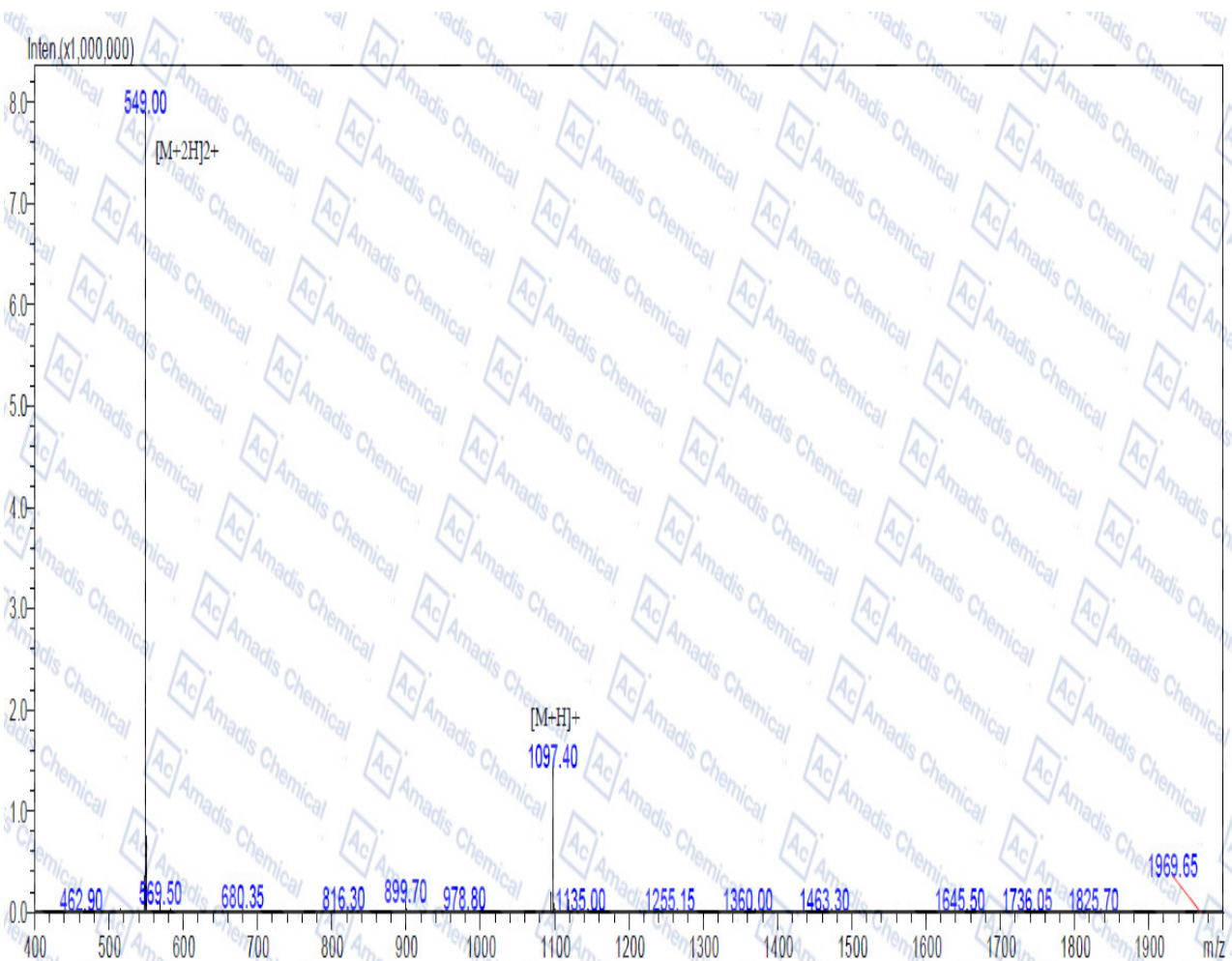


MS of 108736-35-2



Sample Description	Instrument SHIMADZU LCMS-2020		
Analyzed date: 2019-12-29	Probe: ESI	Probe Bias: +4.5kv	
Analyst: SHAO	Nebulizer Gas Flow: 1.5L/min	Detector: 1.5kv	
Sample: 800041	CDL: -20.0v	T. Flow: 0.2ml/min	
M.W.: 1096.3	CDL Temp.: 250°C	B. Conc.: 50%H2O/50%ACN	
Lot. No.:	Block Temp.: 200°C		

*For R&D use only

*if you have any comments and suggestions, please contact us by sales@amadischem.com