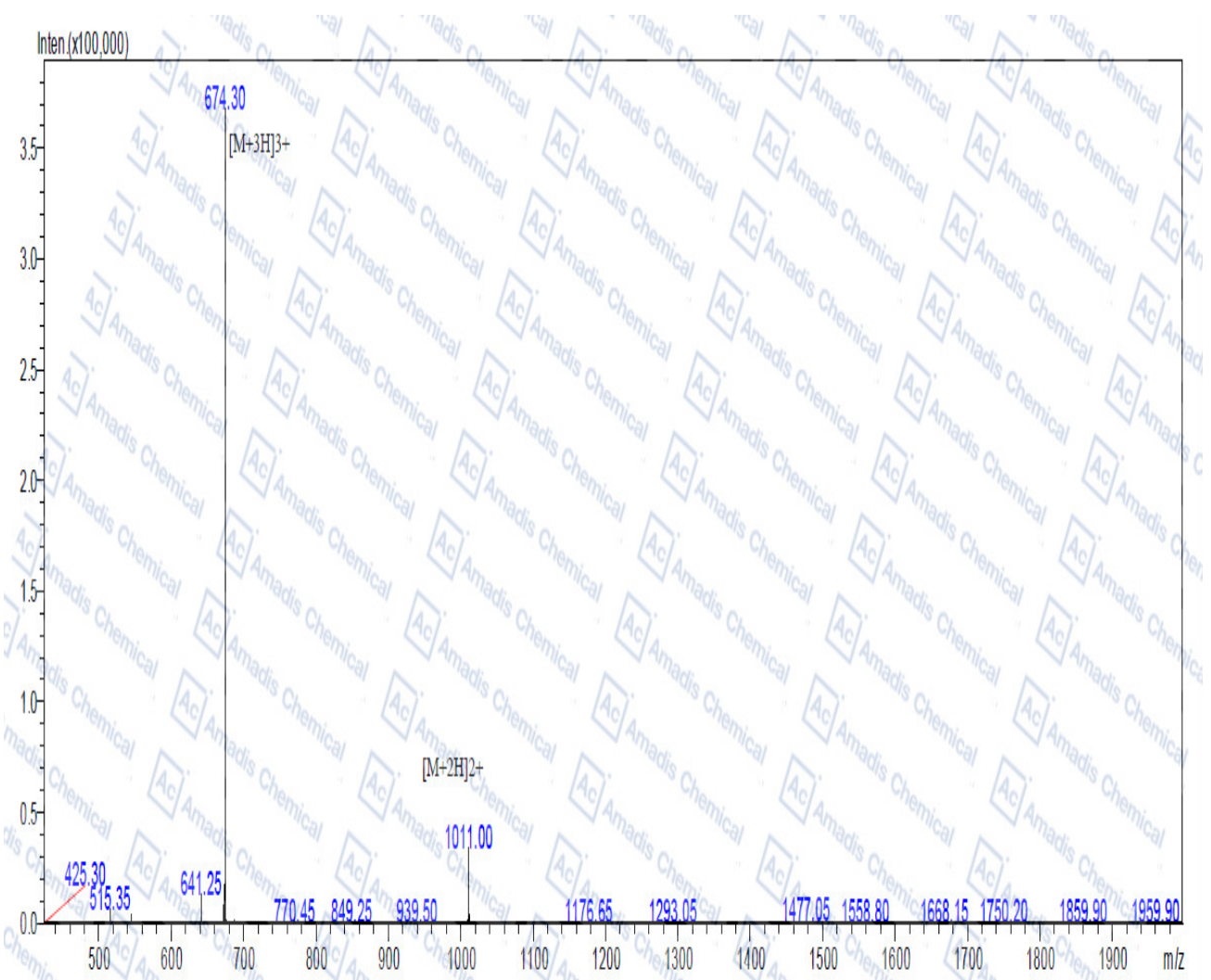


MS of 1659305-78-8



Sample Description	Instrument	SHIMADZU LCMS-2020	
Analyzed date: 2020-2-24	Probe:	ESI	Probe Bias: +4.5kv
Analyst: SHAO	Nebulizer Gas Flow:	1.5L/min	Detector: 1.5kv
Sample: 602607	CDL:	-20.0v	T. Flow: 0.2ml/min
M.W.: 2019.9	CDL Temp.:	250°C	B. Conc.: 50%H2O/50%ACN
Lot. No.:	Block Temp.:	200°C	

*For R&D use only

*if you have any comments and suggestions, please contact us by sales@amadischem.com