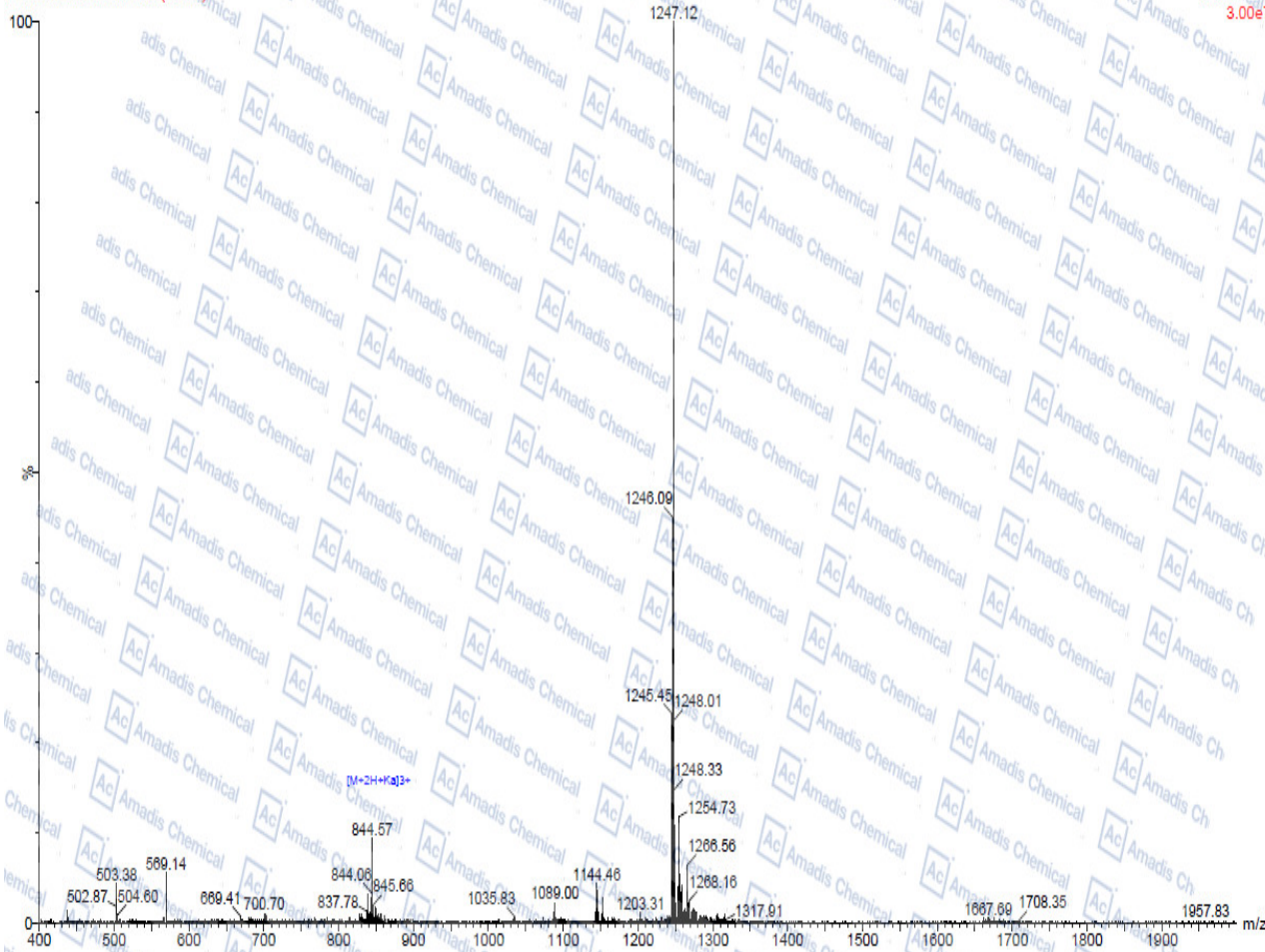


MS of 117399-94-7

MASS SPECTROMETRY REPORT

P180903-1-Y1-0408 20 (0.370)

Scan ES+
3.00e7



Sample Description

Analyzed date: 2020-02-28
 Analyst: PY
 Sample: 内皮素-1 117399-94-7 /Endothelin-1
 M.W.: 2491.95
 Lot No.: P191216-3

Instrument

Waters ZQ2000
 Probe: ESI Probe Bias: +4.5kv
 Nebulizer Gas Flow: 1.5L/min Detector: 1.5kv
 CDL: -20.0v T. Flow: 0.2ml/min
 CDL Temp.: 250°C B. Conc.: 50%H2O/50%ACN
 Block Temp.: 200°C

*For R&D use only

* if you have any comments and suggestions, please contact us by sales@amadischem.com