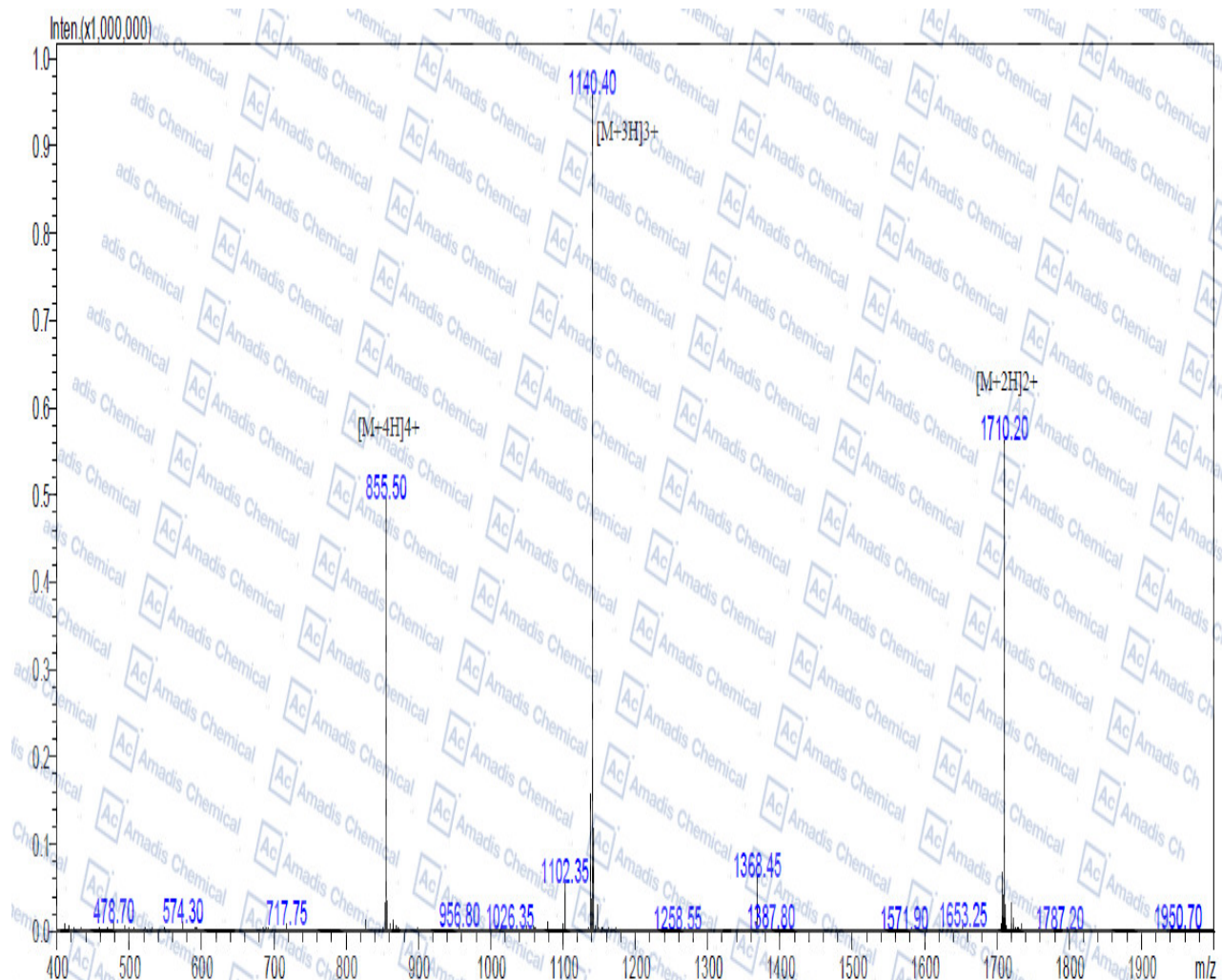


MS of 21215-62-3



Sample Description	Instrument	SHIMADZU LCMS-2020
Analyzed date: 2020-11-5	Probe:	ESI Probe Bias: +4.5kv
Analyst: SHAO	Nebulizer Gas Flow:	1.5L/min Detector: 1.5kv
Sample: 601274	CDL:	-20.0v T. Flow: 0.2ml/min
M.W.: 3417.9	CDL Temp.:	250°C B. Conc.: 50%H ₂ O/50%ACN
Lot No.:	Block Temp.:	200°C

*For R&D use only

* if you have any comments and suggestions, please contact us by sales@amadischem.com