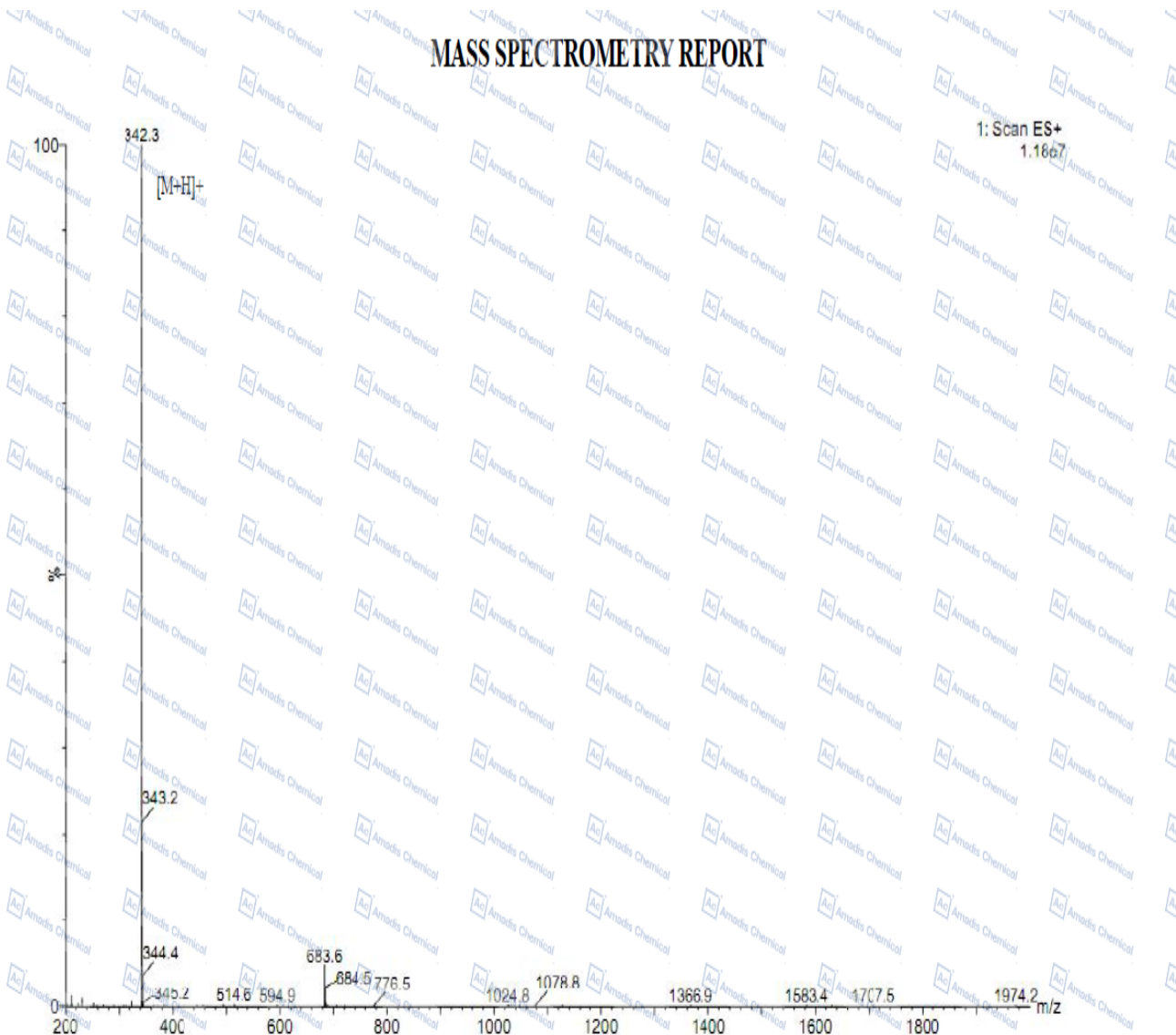


**MS of 90614-48-5**

**MASS SPECTROMETRY REPORT**

1: Scan ES+  
1.1867



Sample Description	Instrument	SHIMADZU LCMS-2020
Analyzed date: 2020-05-14	Probe:	ESI Probe Bias: +4.5kv
Analyst: SHAO	Nebulizer Gas Flow:	1.5L/min Detector: 1.5kv
Sample: 602391	CDL:	-20.0v T. Flow: 0.2ml/min
M.W.: 341.5	CDL Temp.:	250°C B. Conc.: 50%H2O/50%ACN
Lot. No.:	Block Temp.:	200°C

\*For R&D use only

\*if you have any comments and suggestions, please contact us by [sales@amadischem.com](mailto:sales@amadischem.com)