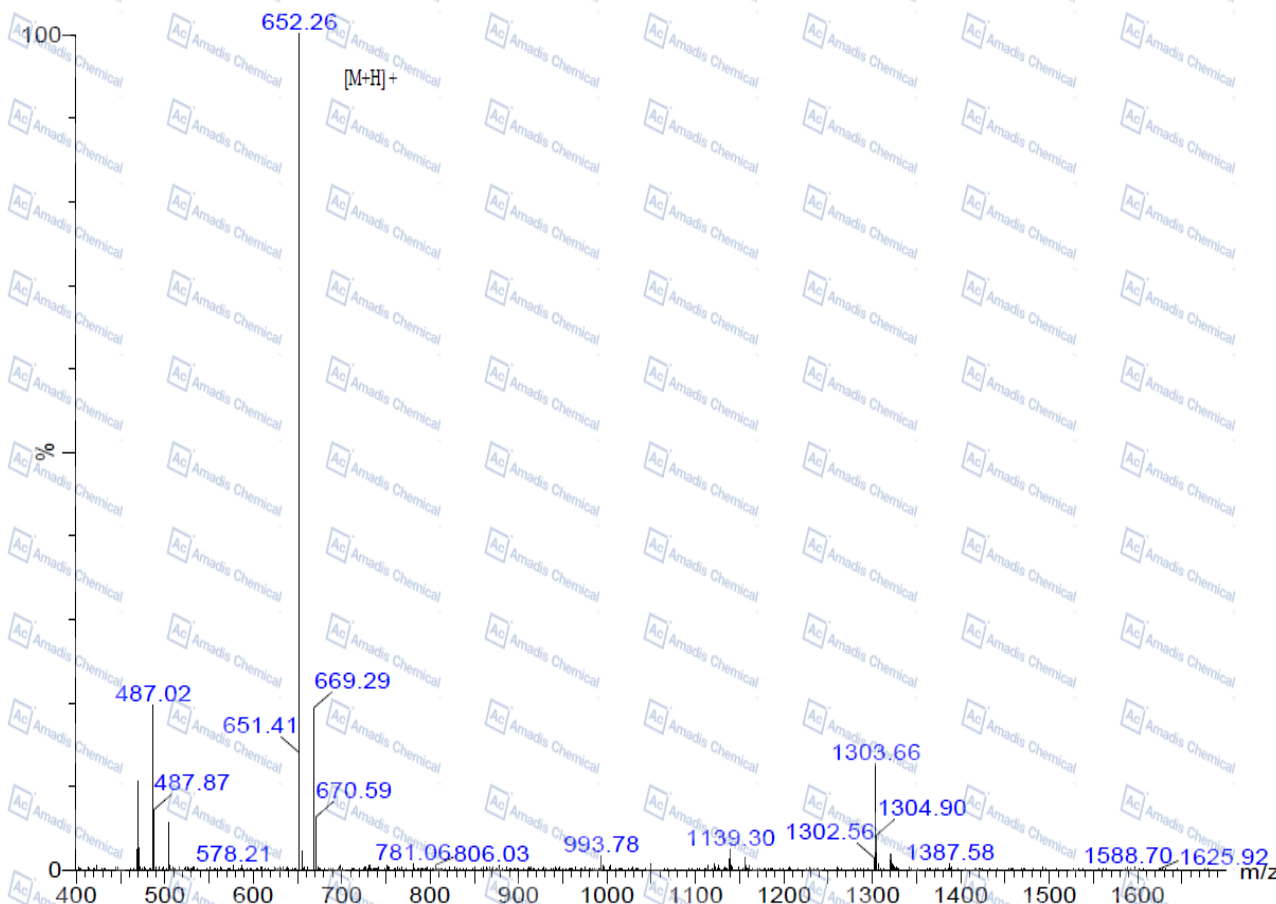


**MS of 1639939-40-4**

**MASS SPECTROMETRY REPORT**

605024



Sample Description

Analyzed date: 2022-05-17

Analyst: SHAO

Sample: 605024

M.W.: 651.7

Lot. No.:

Instrument

SHIMADZU LCMS-2020

Probe:

ESI

Probe Bias:

+4.5kv

Nebulizer Gas Flow:

1.5L/min

Detector:

1.5kv

CDL:

-20.0v

T. Flow:

0.2ml/min

CDL Temp.:

250 °C

B. Conc.:

50%H2O/50%ACN

Block Temp.:

200 °C

**\*For laboratory or manufacturing use only, not for drug, food and household use.**

*\* if you have any comments and suggestions, please contact us by [sales@amadischem.com](mailto:sales@amadischem.com)*