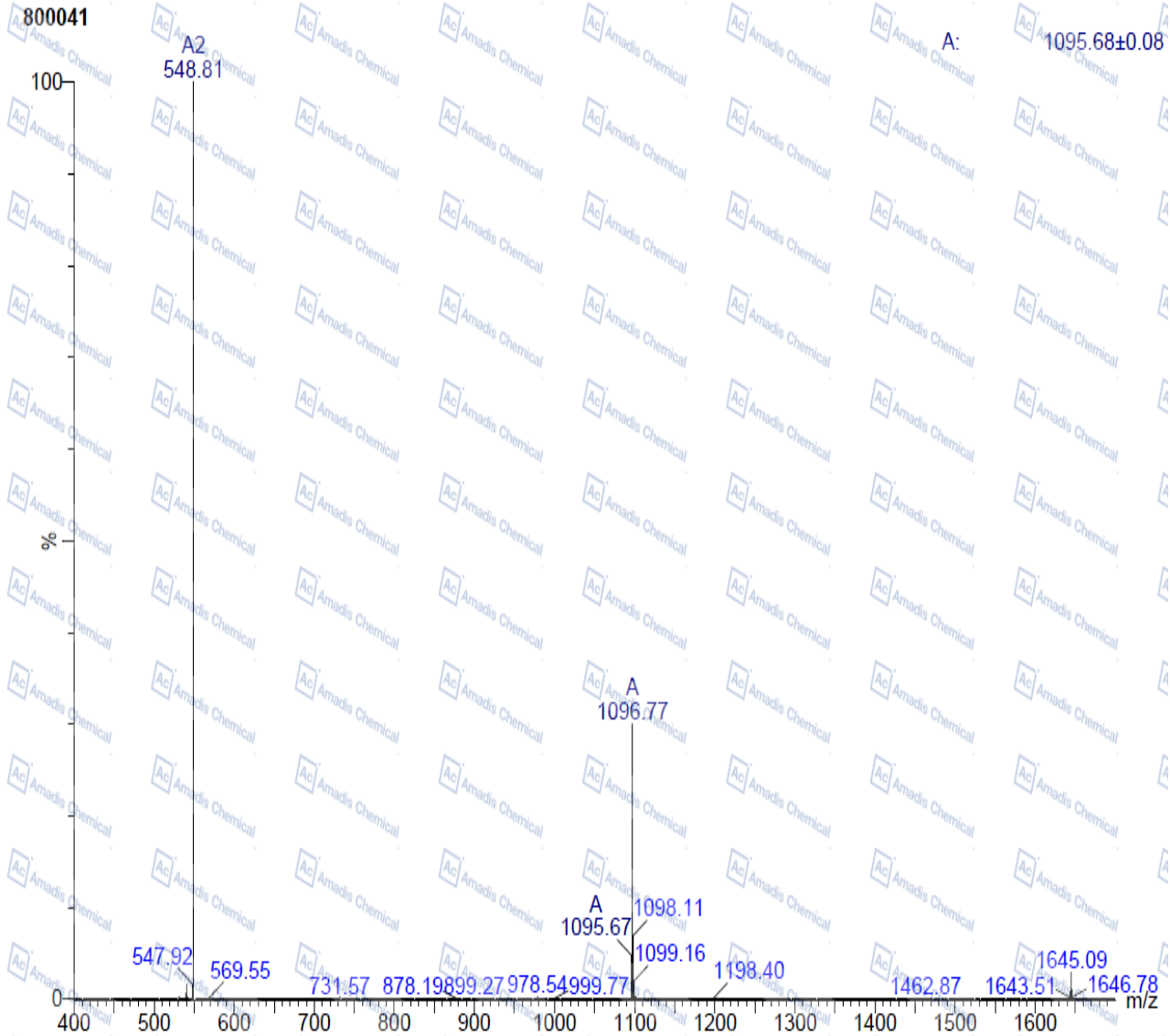


MS of 127984-74-1

MASS SPECTROMETRY REPORT



Sample Description	Instrument	SHIMADZU LCMS-2020	
Analyzed date: 2022-03-01	Probe:	ESI	Probe Bias: +4.5kv
Analyst: SHAO	Nebulizer Gas Flow:	1.5L/min	Detector: 1.5kv
Sample: 800041	CDL:	-20.0v	T. Flow: 0.2ml/min
M.W.: 1096.3	CDL Temp:	250 °C	B. Conc.: 50%H2O/50%ACN
Lot. No.:	Block Temp.:	200 °C	

*For laboratory or manufacturing use only, not for drug, food and household use.

* if you have any comments and suggestions, please contact us by sales@amadischem.com