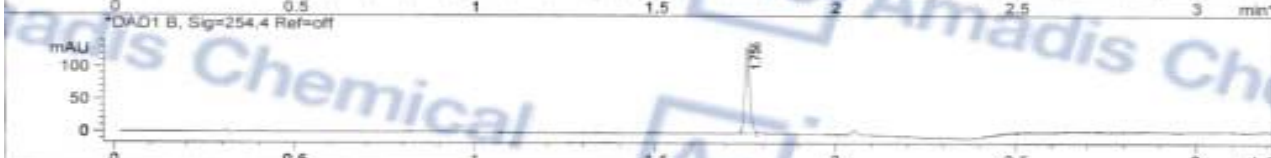


### Certificate Of Analysis

File D:\DATA\3.D  
 Injection Date : 22-May-13 1:13 pm China S Tgt Mass(EZX) :  
 Sample Name : 3 Location : P2-B-3  
 Acq. Operator : LCMSA1 Inj : 1  
 Spec. Reported : MS Integration Inj Volume : 0.5 ul  
 Acq. Method : C:\Chem32\1\METHODS\1-POS-3MIN.M  
 Analysis Method : C:\Chem32\1\METHODS\1-POS-3MIN.M  
 Sample Info : \*\*\* No target masses specified \*\*\*  
 Method Info : Mobile Phase: A: water(0.01%TFA) B: ACN(0.01%TFA)  
 Gradient: 5%-95% B in 1.7 min  
 Flow Rate: 2.2 ml/min  
 Column: SunFire C18,4.6\*50mm,3.5um  
 Column Temperature: 50 C  
 MASS Range:110-900



Integration Results for ADC1 A, ELSD

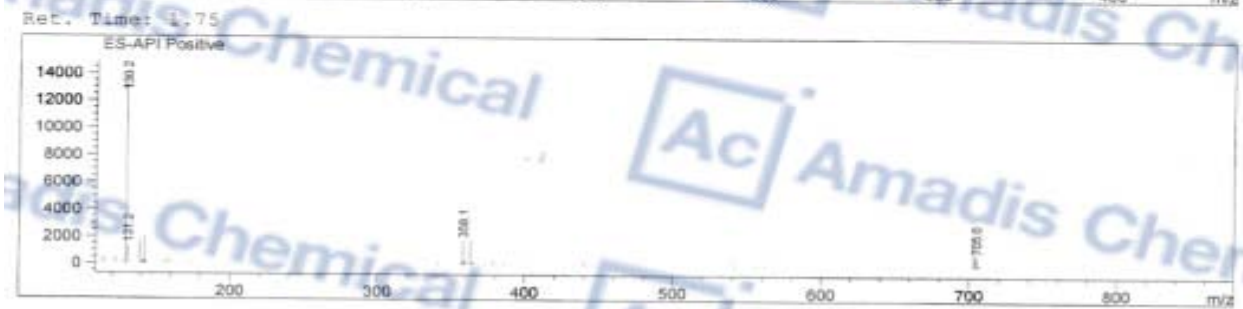
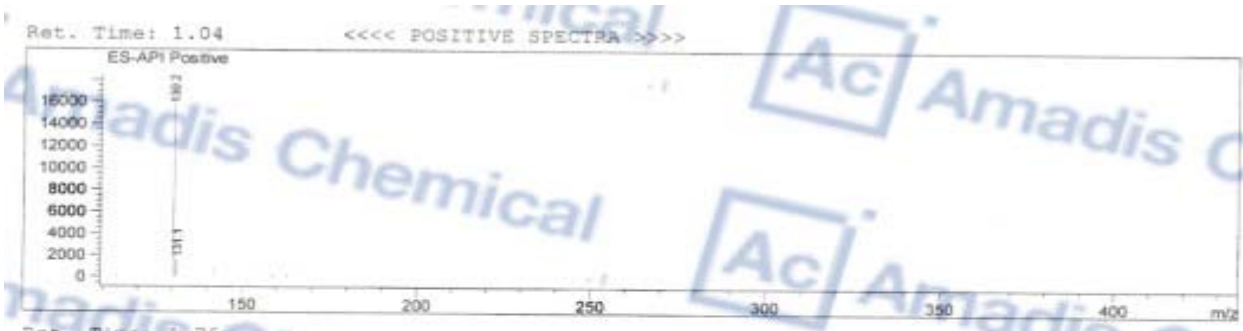
RetTim	Width	Area	Height	Area%
1.75	0.02	742.25	539.53	100.00

Integration Results for DAD1 A, Sig=214.4 Ref=off

RetTim	Width	Area	Height	Area%
1.76	0.02	1212.54	1220.32	100.00

Integration Results for DAD1 B, Sig=254.4 Ref=off

RetTim	Width	Area	Height	Area%
1.76	0.02	132.06	135.29	100.00



---

\* If you have any comments and suggestions, please contact us by [sales@amadischem.com](mailto:sales@amadischem.com)