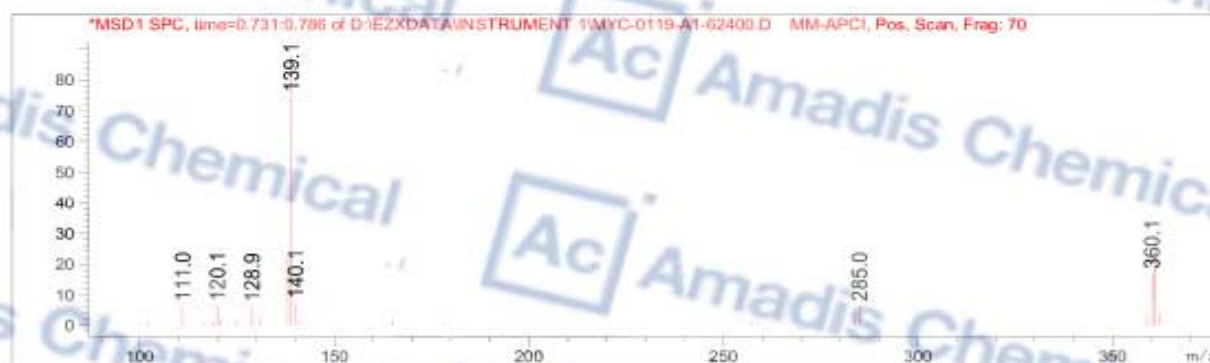
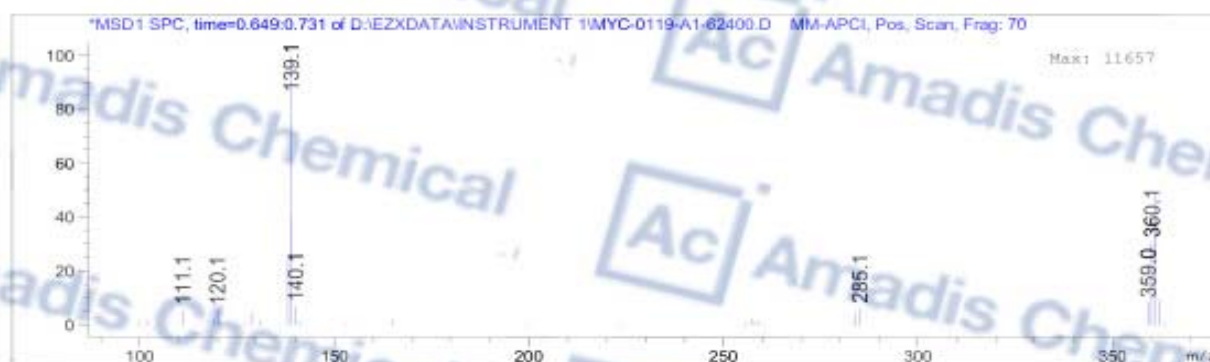


MS of 1309982-15-7

MS Signal: MSD1 TIC, MS File, MM-APCI, Pos, Scan, Frag: 70
 Spectra averaged over upper half of peaks.
 Noise Cutoff: 1000 counts.
 Reportable Ion Abundance: > 10%.

| Retention Time (MS) | MS Area | Mol. Weight or Ion |
|---------------------|---------|--------------------|
| 0.663 | 200389 | 361.10 I |
| | | 360.10 I |
| | | 139.10 I |
| | | 138.10 I |
| 0.759 | 239007 | 361.10 I |
| | | 360.15 I |
| | | 139.10 I |
| | | 138.15 I |



* If you have any comments and suggestions, please contact us by sales@amadischem.com