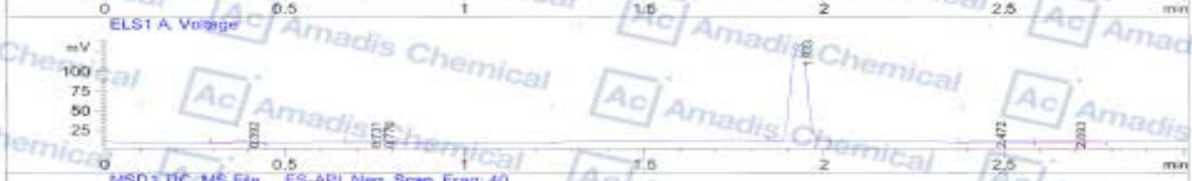
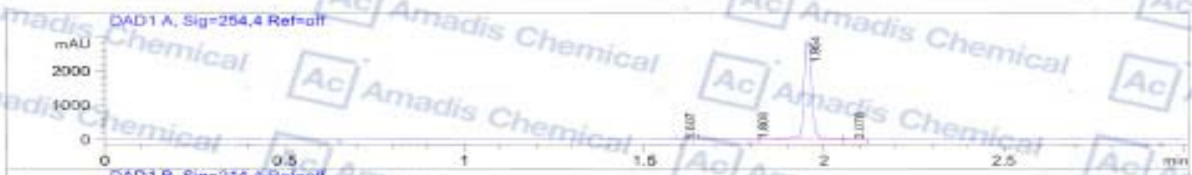


HPLC Of 906673-54-9

LC/MS Report

File D:\DATA\BATCCD\MONITOR\08-22-1-04188-LCMS047.D
 Injection Date : 23 Aug 16 3:13 pm +0800 Tgt Mass (EZM) :
 Sample Name : 08-22-1 Location : PI-A-01
 Acq. Operator : BATCCD Inj : 1 Inj Volume : 1 ul
 Spec. Reported : MS Integration
 Acq. Method : C:\Chem32\1\METHODS\MONITOR 3MIN-B-N.M
 Analysis Method : C:\CHEM32\1\METHODS\MONITOR 3MIN-B-N.M
 Sample Info : Easy-Access Method: 'MONITOR 3MIN-B-N.M'
 Method Info : Column: Waters X Bridge C18: 50mm*4.6 mm*3.5 um;
 Mobile Phase: A: Water (0.01mol/L NH4HCO3) B: ACN
 Gradient : B from 5% to 100% for 1.6 min and hold 100% for 1.4 min;
 Flow rate: 2.0 ml/min;
 Column Temperature: 40 °C



Integration Results for DAD1 A, Sig=254.4 Ref=off

RetTim	Width	Area	Height	Area%
1.61	0.02	4.23	3.57	0.09
1.81	0.04	45.27	13.21	0.99
1.95	0.02	4501.49	2878.05	98.44
2.08	0.02	21.94	16.63	0.48

Integration Results for DAD1 B, Sig=214.4 Ref=off

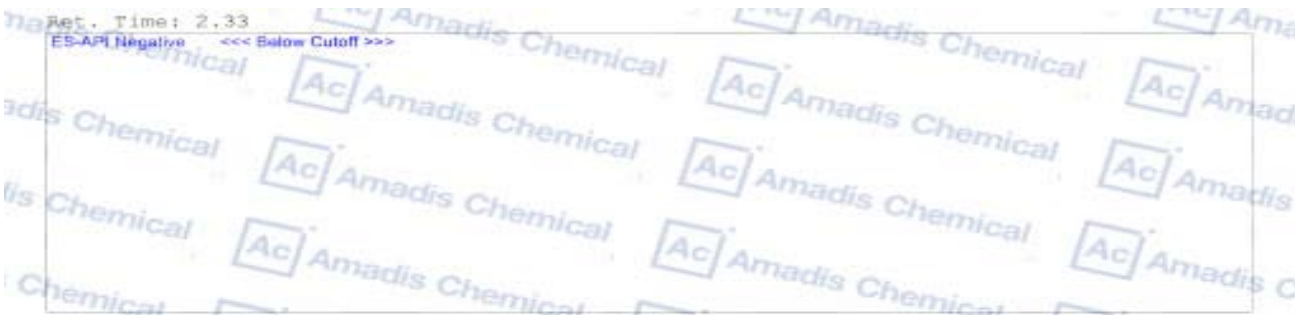
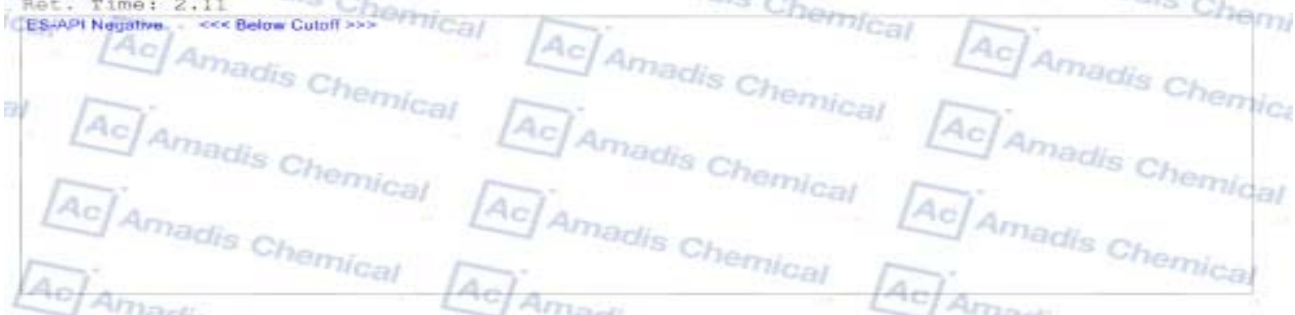
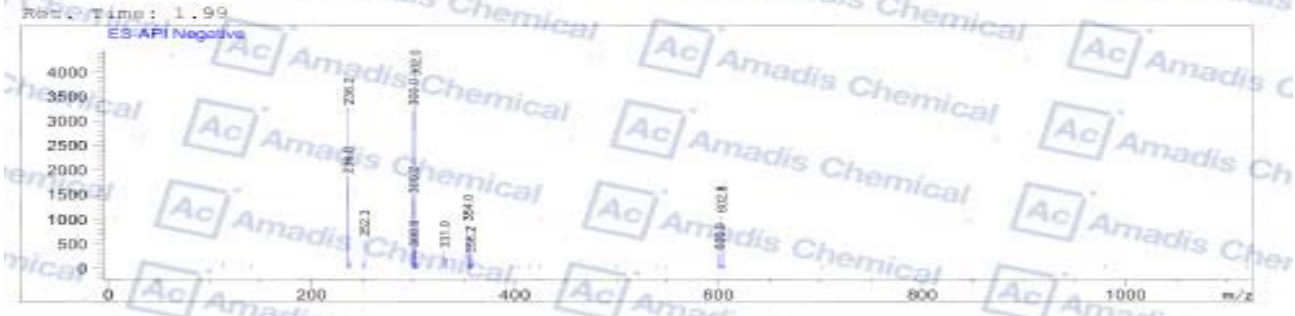
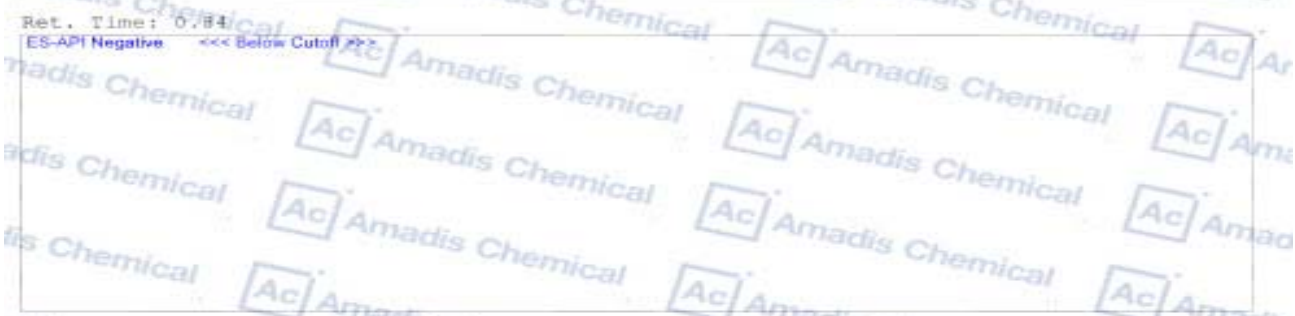
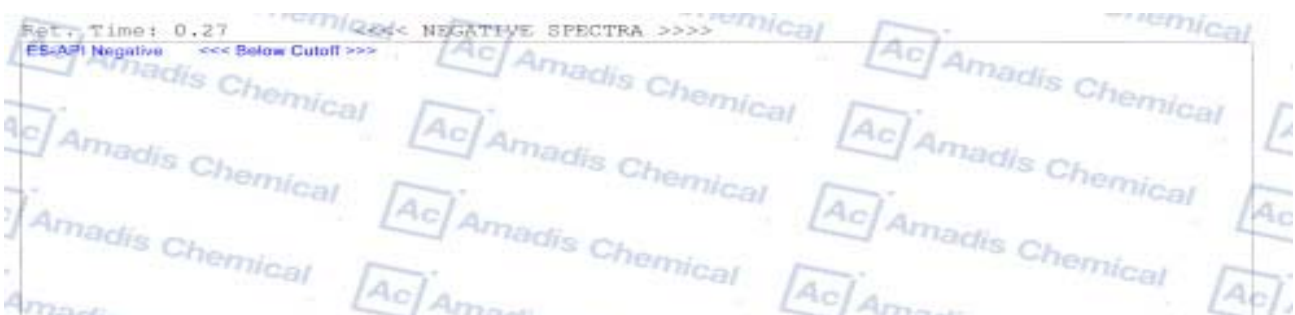
RetTim	Width	Area	Height	Area%
1.58	0.02	28.31	27.19	0.76
1.95	0.02	3764.47	2401.01	98.87
2.08	0.02	14.71	12.72	0.39

Integration Results for ELS1 A, Voltage

RetTim	Width	Area	Height	Area%
0.39	0.06	9.50	3.82	2.17
0.73	0.03	6.38	1.95	1.91

Integration Results for MSD1 TIC. MS File

RetTime	Width	Area	Height	Area%
0.27	0.02	17526.93	14930.66	4.13
0.84	0.06	89364.76	11505.52	9.27
1.99	0.04	298411.56	125397.58	70.29
2.31	0.05	46825.25	28190.22	11.03
2.33	0.03	22414.10	10728.99	5.28



* If you have any comments and suggestions, please contact us by sales@amadischem.com