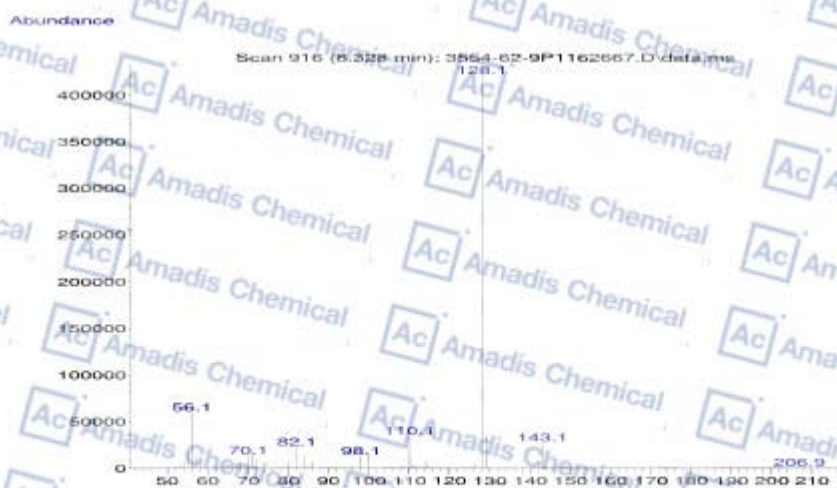
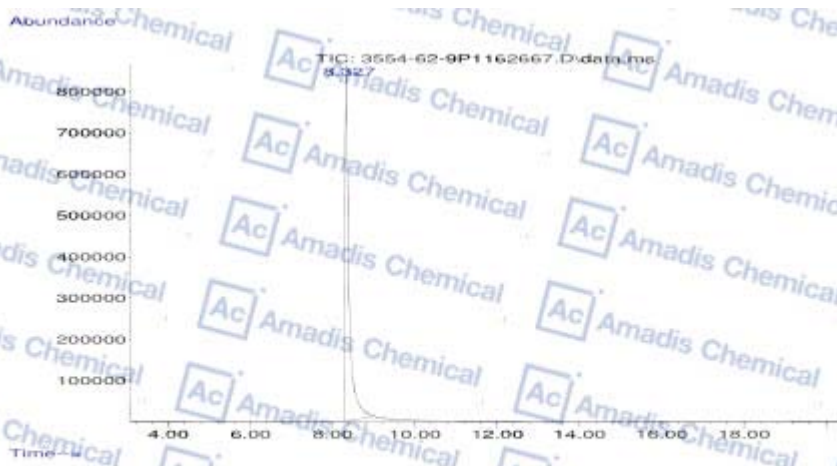


**MS-3554-62-9**



Signal : TIC: 3554-62-9P1162667.D\data.ms

peak #	R.T.	first scan	max scan	last scan	PK TY	peak height	corr. area	corr. % max	% of total
1	8.327	904	916	1026	M	863896	59033528	100.00%	100.000%

\* if you have any comments and suggestions, please contact us by [sales@amadischem.com](mailto:sales@amadischem.com)