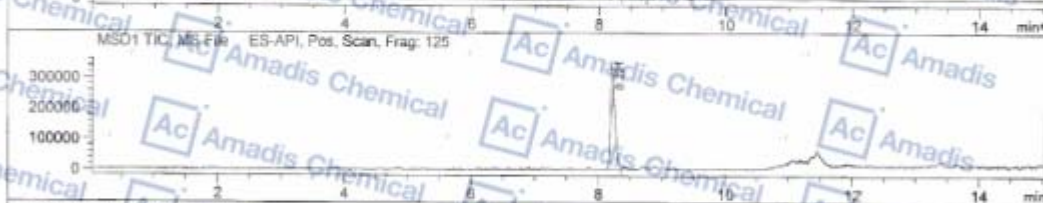
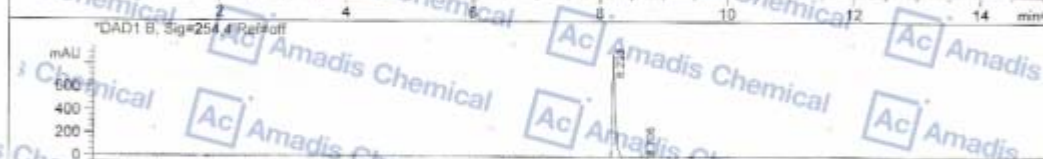
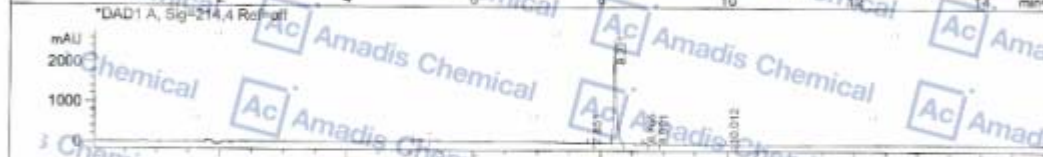
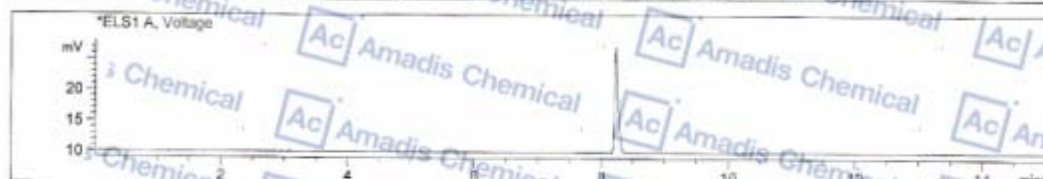


LCMS OF 1450881-55-6

File D:\DATA\T218\MONITOR\SP-CJZ-HPLC-FU-00154-LCMSA028.D
 Injection Date : Jun 17 3:19 pm +0800 Tgt Mass (EZ) :
 Sample Name : SP-CJZ-HPLC-FU Location : P2-B-05
 Acq. Operator : T218-MONITOR Inj : 1
 Spec. Reported : MS Integration Inj Volume : 8 ul
 Acq. Method : C:\CHEM32\1\METHODS\2-HPLC-15MIN.M
 Analysis Method : C:\CHEM32\1\METHODS\2-HPLC-15MIN.M
 Sample Info : Easy-Access Method: '2-HPLC-15MIN'
 Method Info : Mobile phase: A 0.05%TFA in water B 0.05%TFA in ACN
 Gradient: 5%B for 2min, 5% increase to 95%B within 7min, 95%B for 6min.
 Flow Rate: 1.2 ml/min
 Column: Sunfire C18, 3.5um, 4.6*150mm
 Column Temperature: 40 C
 Detection: UV (214, 4nm) and MS (ESI, Pos mode, 110 to 1500 amu)



Integration Results for ELS1 A, Voltage

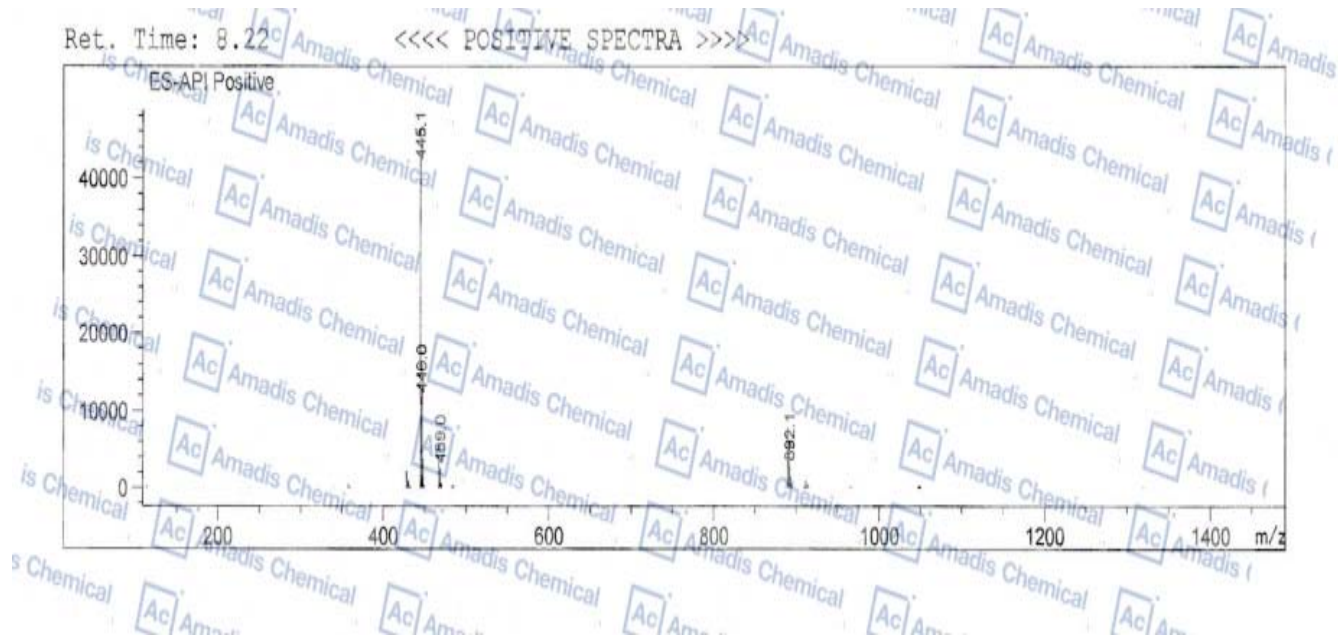
RetTim	Width	Area	Height	Area%
7.85	0.04	33.88	13.91	0.42
8.22	0.04	7789.15	2807.28	98.40
8.71	0.03	61.67	33.53	2.76
8.90	0.03	15.98	8.01	0.50
10.01	0.03	18.89	8.70	0.23

Integration Results for DAD1 A, Sig=214.4 Ref=off

RetTim	Width	Area	Height	Area%
8.22	0.04	2653.70	904.67	99.23
8.71	0.03	20.54	11.17	0.77

Integration Results for DAD1 B, Sig=254.4 Ref=off

RetTim	Width	Area	Height	Area%
8.22	0.04	2653.70	904.67	99.23
8.71	0.03	20.54	11.17	0.77



* if you have any comments and suggestions, please contact us by sales@amadischem.com