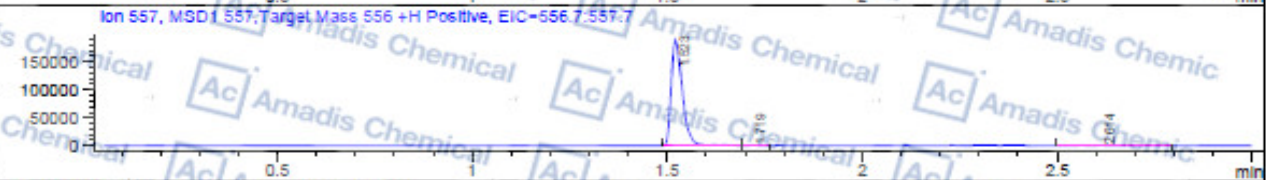
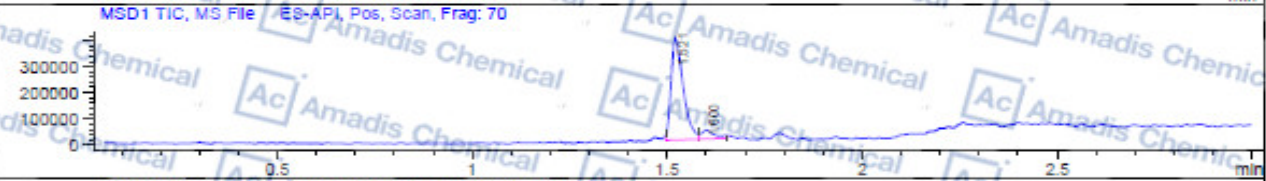
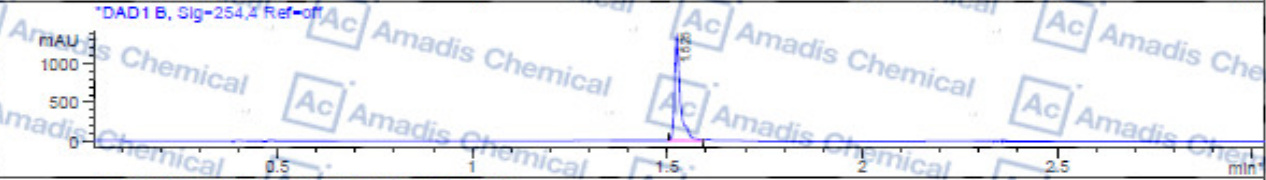
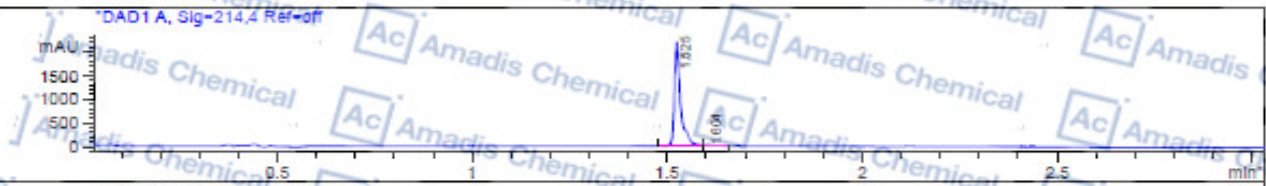


LCMS of 232931-57-6

File D:\DATA\A02\MONITOR\043-056-33877-LCMSA045.D
 Injection Date : 4 Aug 16 11:37 am +0800 Tgt Mass (EZX) : 556.00
 Sample Name : 043-056 Location : P1-A-09
 Acq. Operator : A02-MONITOR Inj : 1
 Spec. Reported : MS Integration Inj Volume : 2 ul
 Acq. Method : D:\METHODS\1-POS-3MIN.M
 Analysis Method : D:\METHODS\1-POS-3MIN.M
 Sample Info : Easy-Access Method: '1-POS-3MIN' 556.00
 Method Info : Mobile Phase: A: water(0.01%TFA) B: ACN(0.01%TFA)
 Gradient: 5%-95% B in 1.3min
 Flow Rate: 1.8ml/min
 Column: Sunfire C18 50*4.6mm, 3.5um
 Oven Temperature: 45 C
 UV214, MASS103-1000

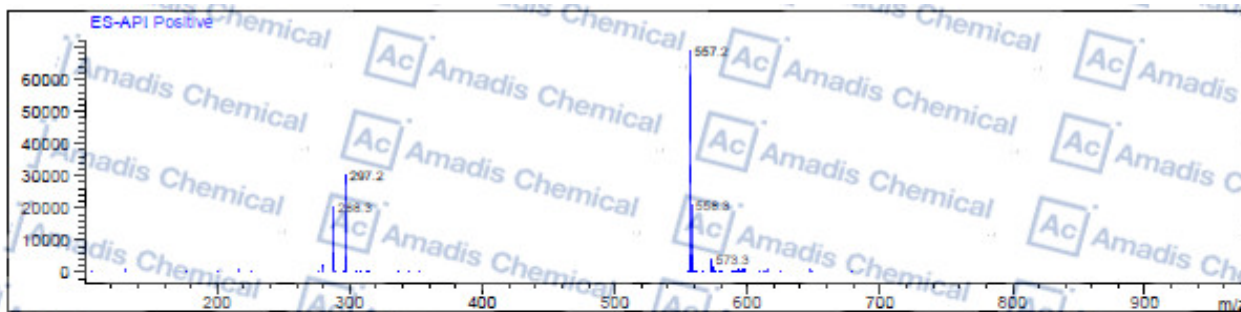


Integration Results for DAD1 A, Sig=214.4 Ref-off

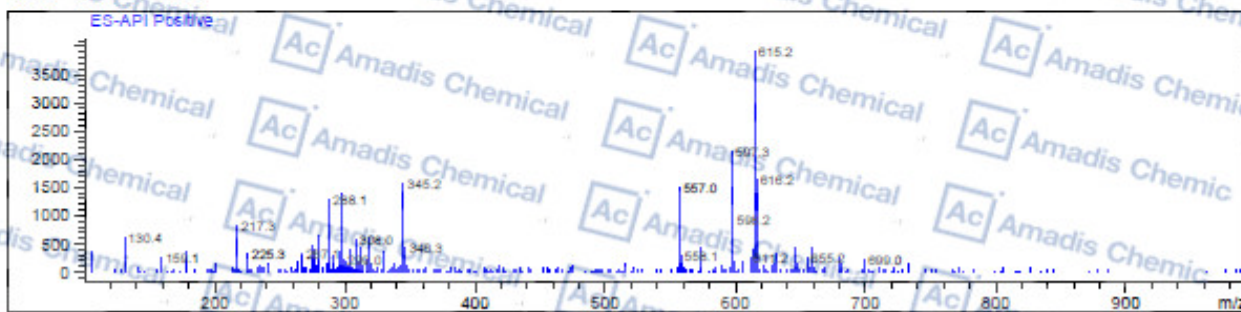
RetTim	Width	Area	Height	Area%
1.53	0.02	2443.56	2150.31	97.50
1.60	0.02	62.71	39.08	2.50

Integration Results for DAD1 B, Sig=254.4 Ref-off

RetTim	Width	Area	Height	Area%
1.52	0.02	1398.74	1316.46	100.00



Ret. Time: 1.60



* If you have any comments and suggestions, please contact us by sales@amadischem.com