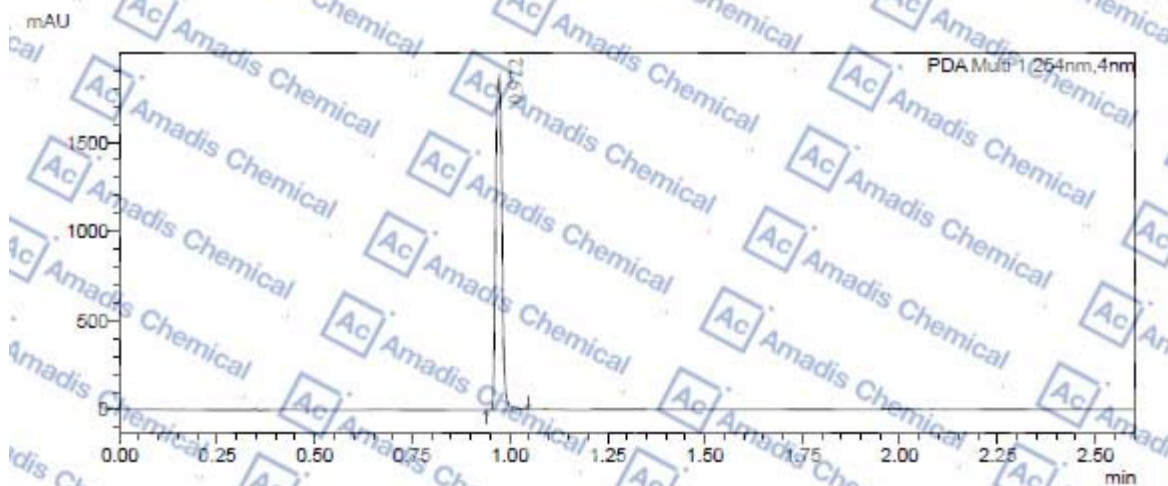


LCMS of 1627710-50-2

Comment : Mobile Phase A:Water/0.05%TFA;
Mobile Phase B:Acetonitrile/0.05%TFA

<Chromatogram>

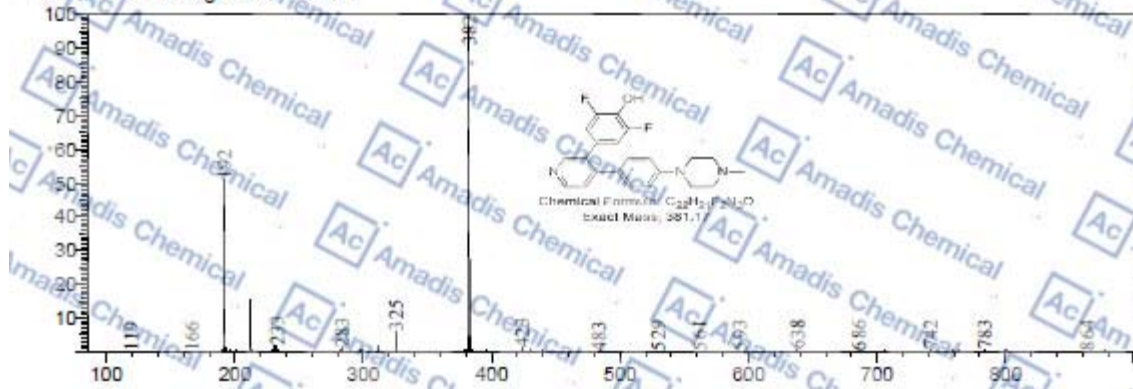


Peak Table

Peak#	Ret. Time	Height	Height%	Area	Area%
1	0.972	1888548	100.000	2059891	100.000
Total		1888548	100.000	2059891	100.000

Mass Spectrum

Line# 1 RetTime:0.977(Scan#:103)
MassPeak:444
Spectrum Mode:Averaged 0.967-0.987(102-104) BasePeak:382(1750349)
BG Mode:Calc Segment 1 Event 1



* if you have any comments and suggestions, please contact us by sales@amadischem.com