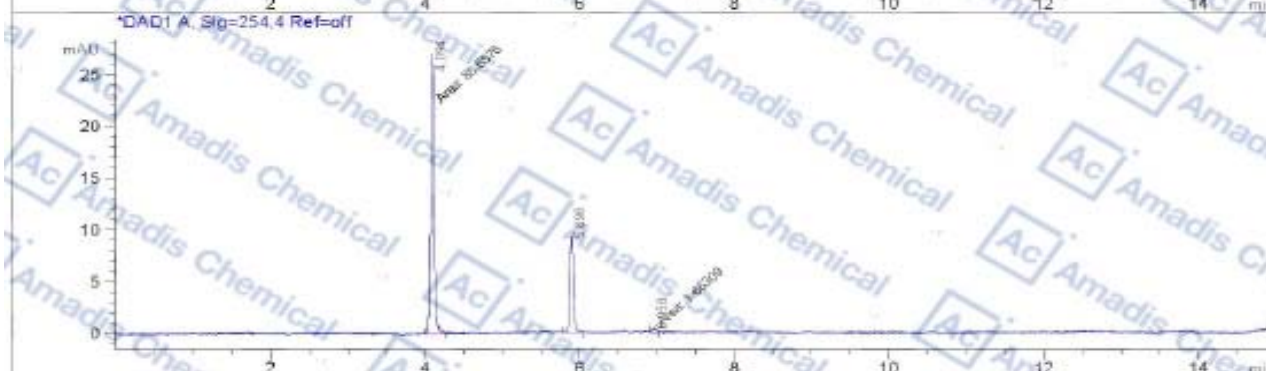
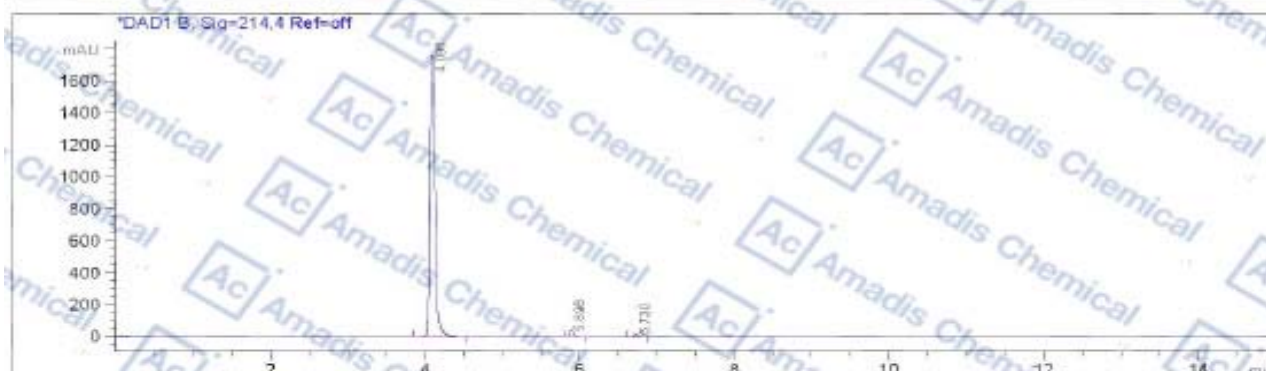


LCMS of 590-93-2

```

File D:\DATA\BATCCD\PRODUCT\BSTD-BAILJ170720-26409-LCMSA040.D
Injection Date : 19-Jul-17, 17:57:01      Tgt Mass(E2X) :
Sample Name    : BSTD-BAILJ170720        Location  : P1-E-09
Acq. Operator  : BATCCD-P                Inj      : 0
Spec. Reported : MS Integration          Inj Volume: 0.8 ul
Acq. Method    : C:\Chem32\2\METHODS\HPLC-A.M
Analysis Method: C:\CHEM32\2\METHODS\HPLC-A.M
Sample Info   : Easy-Access Method: 'HPLC-A.M'
Method Info   : Column: L-column2 ODS: 150 mm*4.6 mm*5.0 um;
                Mobile Phase: A: Water (0.05% TFA) B: ACN (0.05%TFA) ;
                Gradient: Pump1:B from 5% to 100% for 10 min and hold 100% for 5.0 min;
                Flow Rate: 1.0 ml/min;
                Column Temperature: 40 °C
    
```



Integration Results for DAD1 B, Sig=214.4 Ref=off

RetTim	Width	Area	Height	Area%
4.10	0.08	6468.97	1759.19	98.38
5.90	0.05	60.39	37.49	1.05
6.73	0.05	49.06	13.85	0.57

Integration Results for DAD1 A, Sig=254.4 Ref=off

RetTim	Width	Area	Height	Area%
4.09	0.05	85.66	23.18	74.19
5.90	0.05	28.14	9.23	24.37
6.96	0.06	1.66	0.46	1.44

* If you have any comments and suggestions, please contact us by sales@amadischem.com