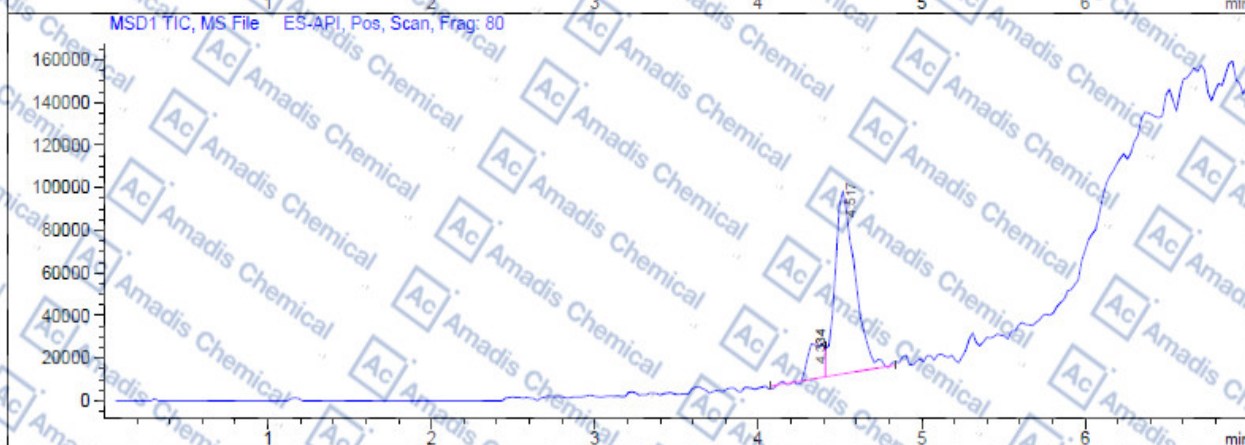
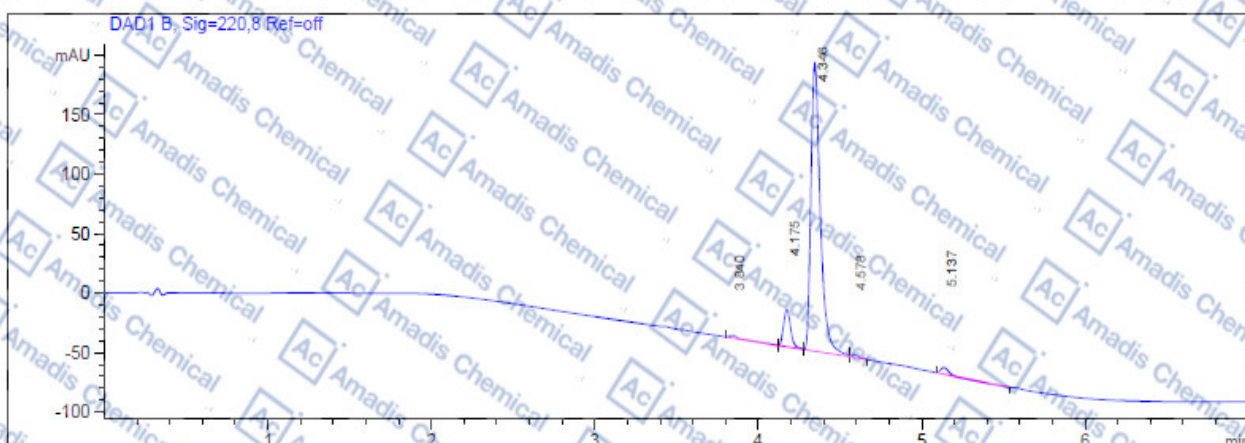


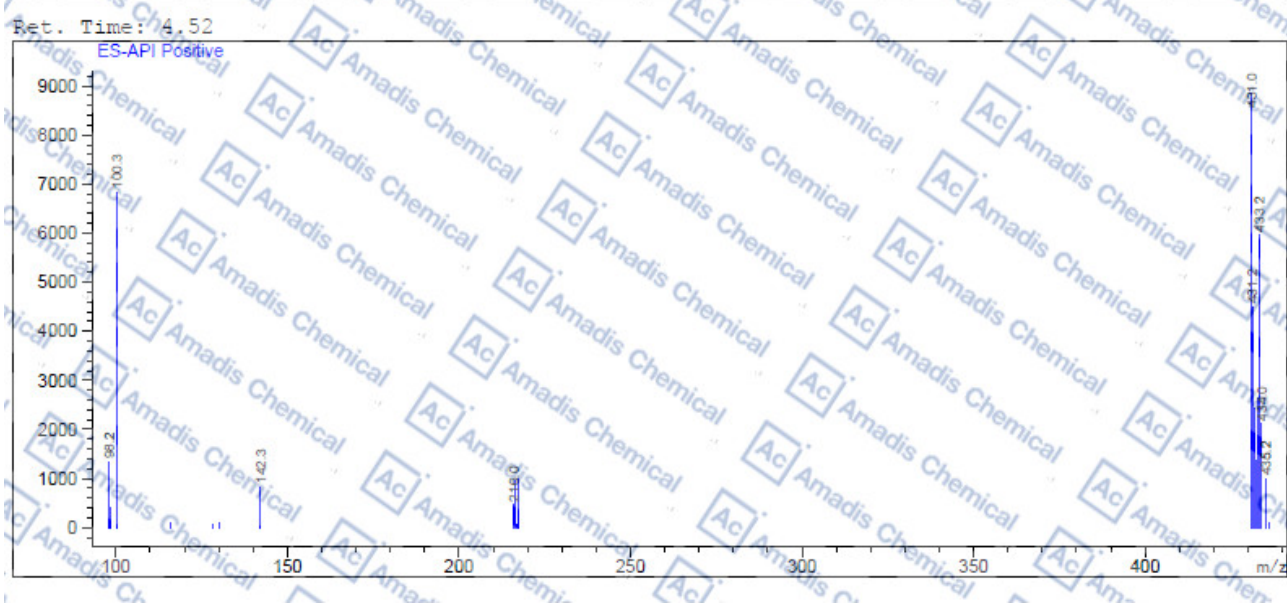
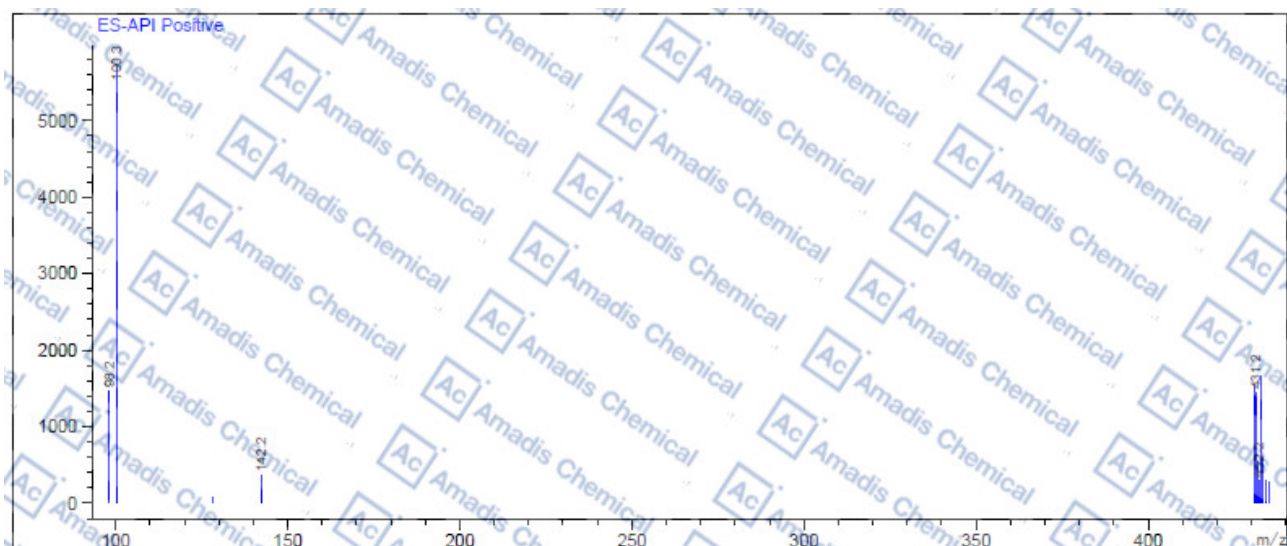
### LCMS of 102262-55-5

File Z:\研发部\V盘\ANALYTICAL DATA\201706\20170605\6120\102262-55-5-20170605-LCMS.D  
 Injection Date : 5 Jun 17 1:00 pm +0800 Tgt Mass (EZ) :  
 Sample Name : Location : P1-D-08  
 Acq. Operator : Inj : 1  
 Spec. Reported : MS Integration Inj Volume : 0.5 ul  
 Acq. Method : C:\Chem32\1\METHODS\401-GP50-KEHU.M  
 Analysis Method : C:\CHEM32\1\METHODS\401-GP50-KEHU.M  
 Sample Info :  
 Method Info : Instrument: Agilent 1200HPLC-6120MS  
 Column: XDB-C18 2.1\*50mm, 5um  
 Mobile phase: A=0.1% TFA in water B=Acetonitrile  
 Gradient: 5%-95% B in 4min, 95%-95% B in 3min  
 Flow Rate: 0.6ml/min  
 Column temperature: 35°C



Integration Results for DAD1 B, Sig=220.8 Ref=off

RetTime	Width	Area	Height	Area%
3.84	0.06	8.67	2.12	0.80
4.18	0.05	93.83	31.25	8.62
4.35	0.06	964.86	242.91	88.64
4.58	0.05	8.01	2.28	0.74
5.14	0.04	13.21	5.70	1.21



\* If you have any comments and suggestions, please contact us by [sales@amadischem.com](mailto:sales@amadischem.com)