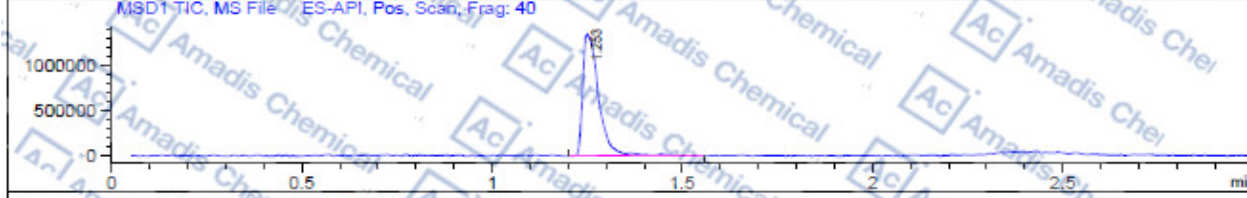
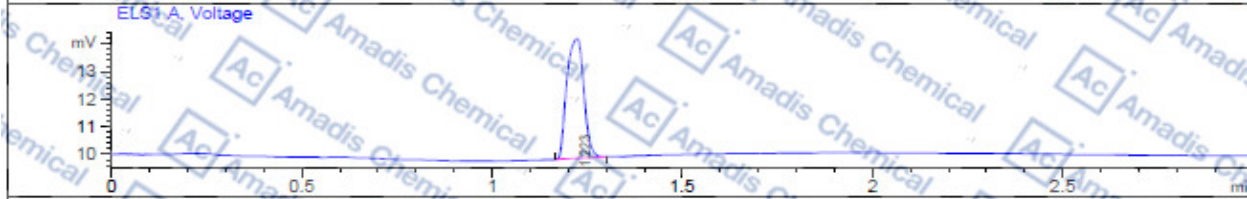
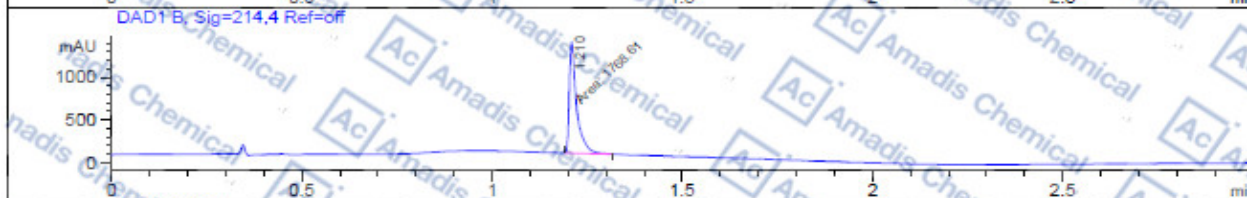
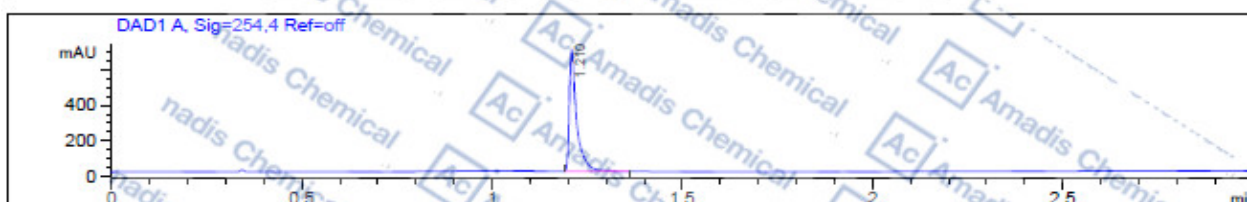


MS of 118499-70-0

File D:\DATA\BATCCD\FB-HSYARK-0071-04559-LCMS040.D Tgt Mass (EZ):
 Injection Date : 25-Sep-17, 20:00:04 Seq. Line : 0
 Sample Name : FB-HSYARK-0071 Location : P2-B-04
 Acq. Operator : BATCCD Inj : 0
 Spec. Reported : MS Integration Inj Volume : 0.5 ul
 Acq. Method : C:\Chem32\1\METHODS\MONITOR 3MIN-A-P.M
 Analysis Method : C:\CHEM32\1\METHODS\MONITOR 3MIN-A-P.M
 Sample Info : Easy-Access Method: 'MONITOR 3MIN-A-P.M'
 Method Info : Column: Waters X-Bridge-C18 50mm*4.6mm,3.5um
 Mobile Phase: A: Water (0.05%TFA) B: ACN (0.05%TFA);
 Gradient : B from 5% to 100% for 1.6 min and hold 100% for 1.4 min;
 Flow Rate: 2 mL/min;
 Column Temperature:40 °C.

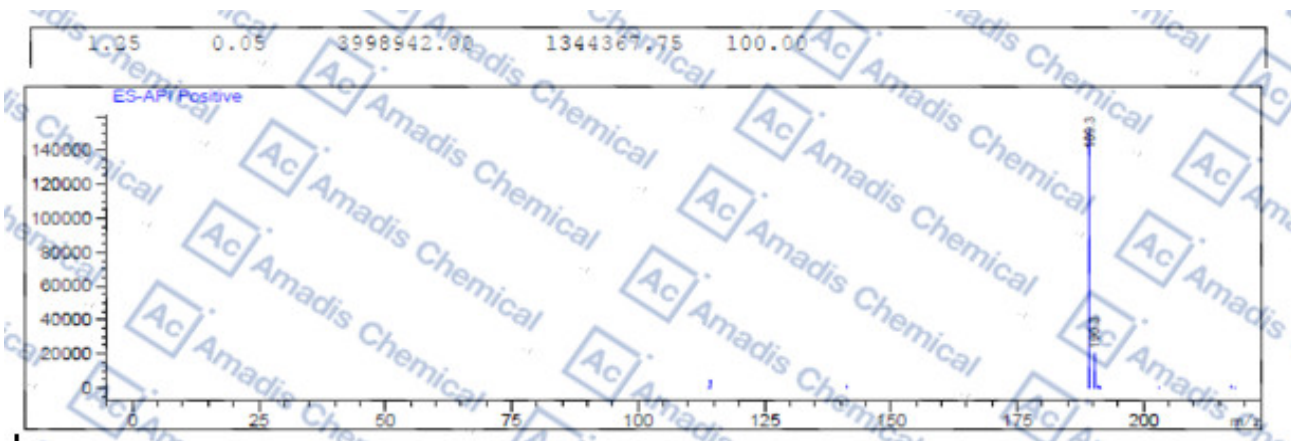


Integration Results for DAD1 A, Sig=254.4 Ref=off				
RetTim	Width	Area	Height	Area%
1.21	0.02	933.56	683.57	100.00

Integration Results for DAD1 B, Sig=214.4 Ref=off				
RetTim	Width	Area	Height	Area%
1.21	0.02	1768.61	1301.13	100.00

Integration Results for ELS1 A, Voltage				
RetTim	Width	Area	Height	Area%
1.22	0.05	13.41	4.84	100.00

Integration Results for MSD1 TIC, MS File				
RetTim	Width	Area	Height	Area%



* If you have any comments and suggestions, please contact us by sales@amadischem.com