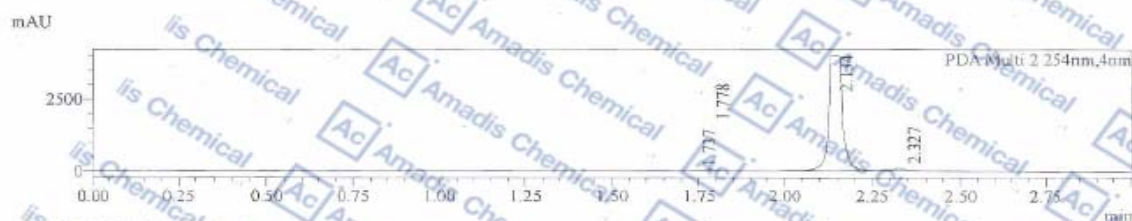
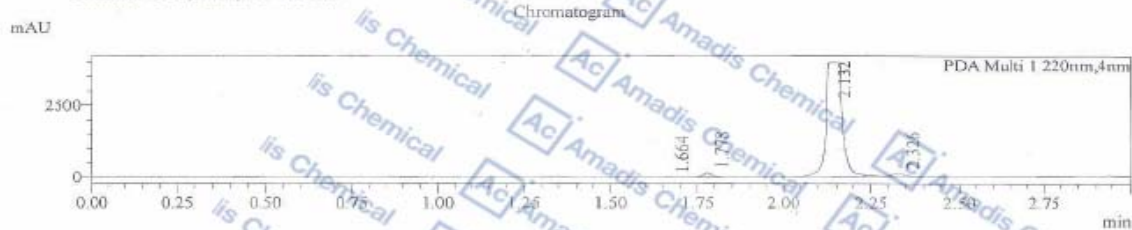
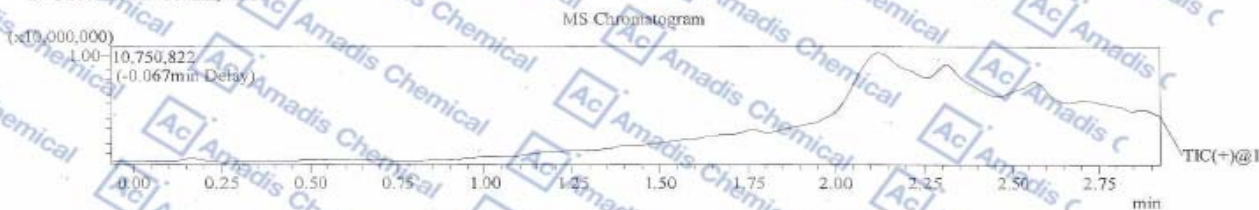


LCMS of 704-01-8

Compound ID :
 Sample ID :
 Injection Date :1/31/2018 16:28:56
 Injection Vol : 2ul
 Location :tray1 vail28
 Acq Method :10-80CD 3min 220&254.lcm
 Org DateFile :1006616-079-2.lcd
 Instrument & column:LCMS-BI 3-101
 Xtimate C18,3um,2.1*30mm



- 1. PDA Multi 1 / 220nm,4mm
- 2. PDA Multi 2 / 254nm,4mm



Integration Result

PDA Ch1 220nm		Peak Table				
Peak#	Ret. Time	Height	Height%	USP Width	Area	Area%
1	1.664	10299	0.241	0.048	16862	0.122
2	1.778	156506	3.657	0.044	238837	1.735
3	2.132	3981339	93.021	0.066	13212512	95.954
4	2.326	131881	3.081	0.059	307415	2.189

PDA Ch2 254nm		Peak Table				
Peak#	Ret. Time	Height	Height%	USP Width	Area	Area%
1	1.737	8909	0.214	0.049	12541	0.107

Peak#	Ret. Time	Height	Height%	USP Width	Area	Area%
2	1.778	69788	1.674	0.045	109423	0.930
3	2.134	3987475	95.628	0.058	11419380	97.022
4	2.327	103624	2.485	0.058	228540	1.942

* if you have any comments and suggestions, please contact us by sales@amadischem.com