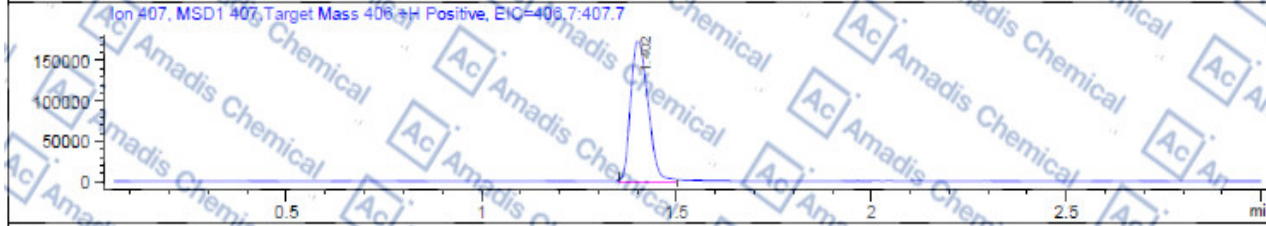
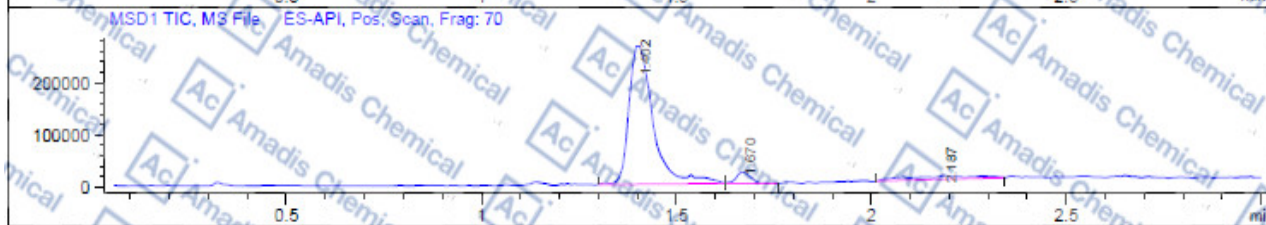
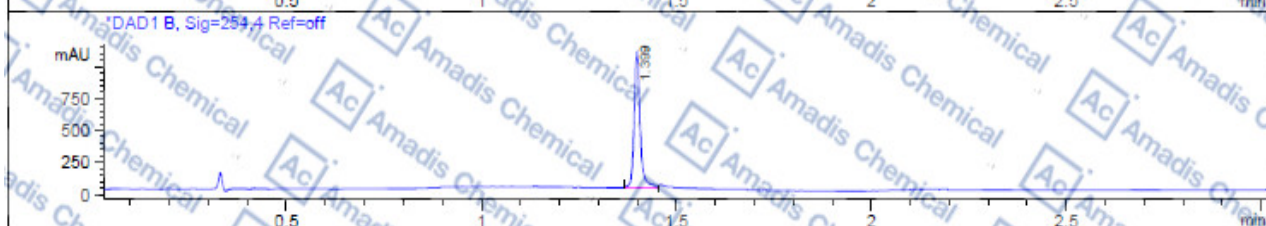
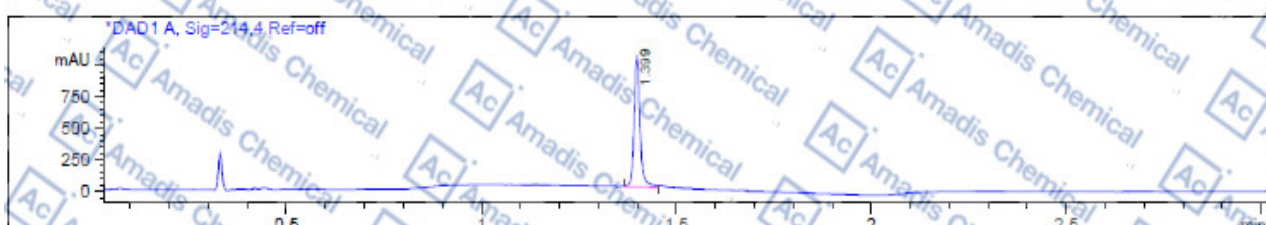


MS of 199294-70-7

406-LCMS
 Tgt Mass (EZX) : 406.00
 Inj Volume : 1.5 μ l
 Method Info : Column: XBridge C18 (4.6x 50 mm, 3.5 μ m)
 Mobile phase: H₂O (10 mmol NH₄HCO₃) (A) / ACN (B)
 Elution program: Gradient from 10 to 95% of B in 1.5 min at 1.8 ml/min
 Temperature: 50 $^{\circ}$ C
 Detection: UV (214, 4 nm) and MS (ESI, POS mode, 80 to 900 amu)



Integration Results for DAD1 A, Sig=214.4 Ref=off

RetTim	Width	Area	Height	Area%
1.40	0.02	1087.83	1039.89	100.00

Integration Results for DAD1 B, Sig=254.4 Ref=off

RetTim	Width	Area	Height	Area%
1.40	0.02	1127.23	1065.03	100.00