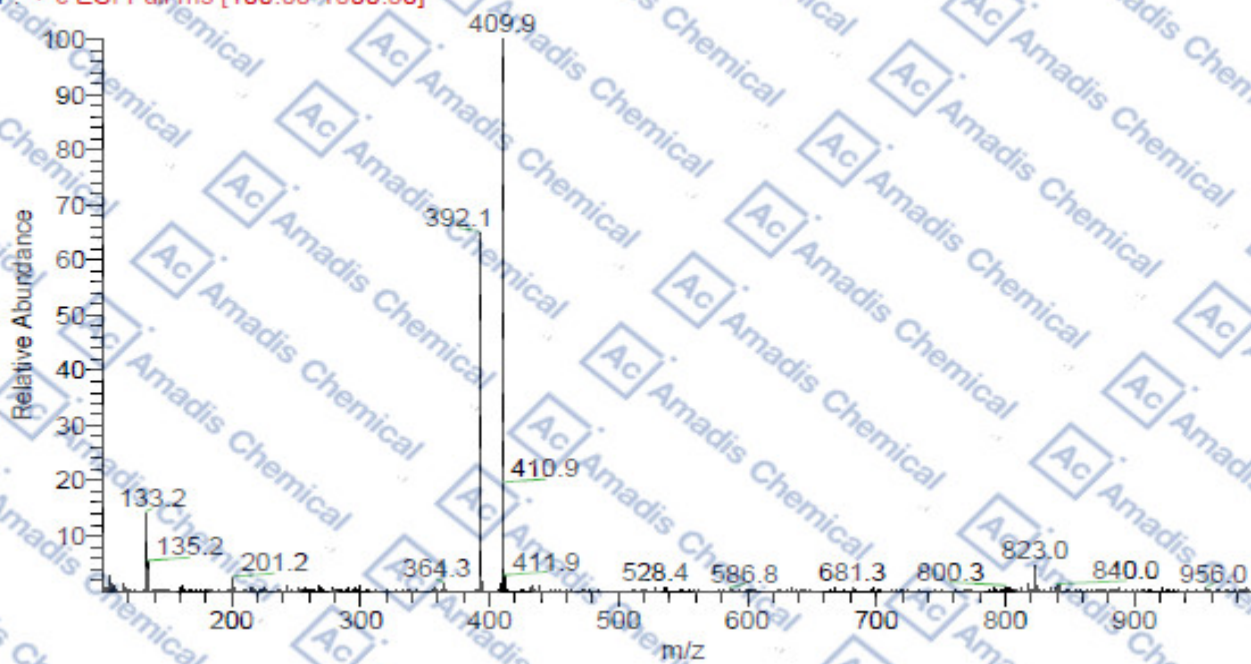


MS of 1593543-00-0

Data File:	YZB-SSR-29631-MS	Sample ID:	1
Current Data Path:		Vial:	40
Operator:	GX280	Operator:	None
Run Time (min):	10.98	Mass Range 1 (m/z):	100-1000
Injection Volume (µl):	5.00		
Detector Type:	MS		
Range (min):	1.00-10.00		
Peak Detection Algorithm:	ICIS		

YZB-SSR-29631-MS #473 RT: 7.39 AV: 1 TH: 0.00 NL: 3.67E8

F: + c ESI Full ms [100.00-1000.00]



*if you have any comments and suggestions, please contact us by sales@amadischem.com