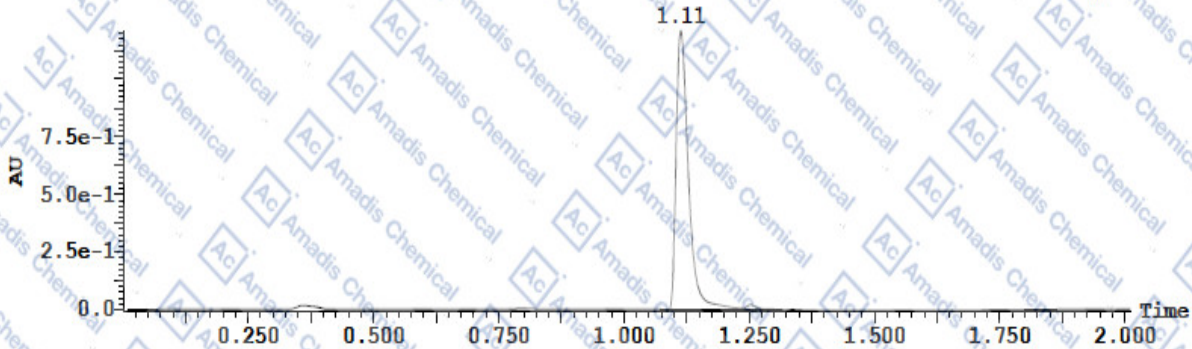


LCMS of 100929-45-1

Vial:1:18
 Date:20-Mar-2017
 MP:C:0.1%FA/H2O D:0.1%FA/ACN Col.:BEH C18:
 Method:C:\MassLynx\C95D5+.olp

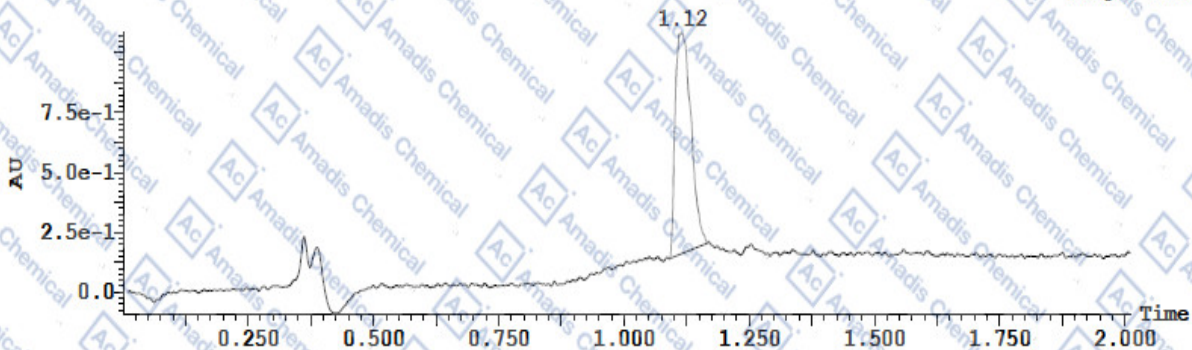
File:COMPOUND 1
 Time:10:31:35
 Inlet Method:C95D5
 Injection Volume:1.0000

(1) PDA Ch1 254nm@4.8nm 1.211
Range: 1.214



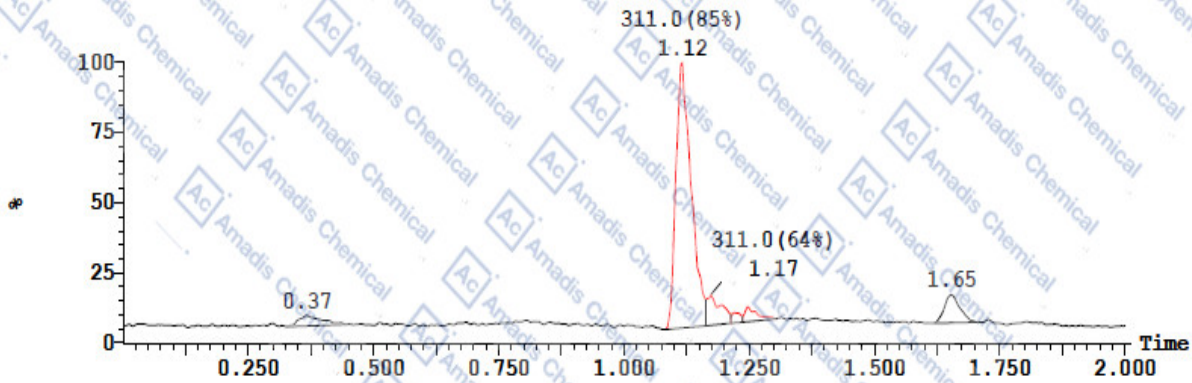
Time	Width	Height	AreaAbs	Area %Total
1.11	0.148	1e+006	3e+004	98.43
1.25	0.072	2e+004	6e+002	1.57

(1) PDA Ch2 214nm@4.8nm 1.082
Range: 1.17



Time	Width	Height	AreaAbs	Area %Total
1.12	0.075	9e+005	3e+004	100.00

1: MS ES+ :TIC Smooth (SG, 2x2) 5.2e+007

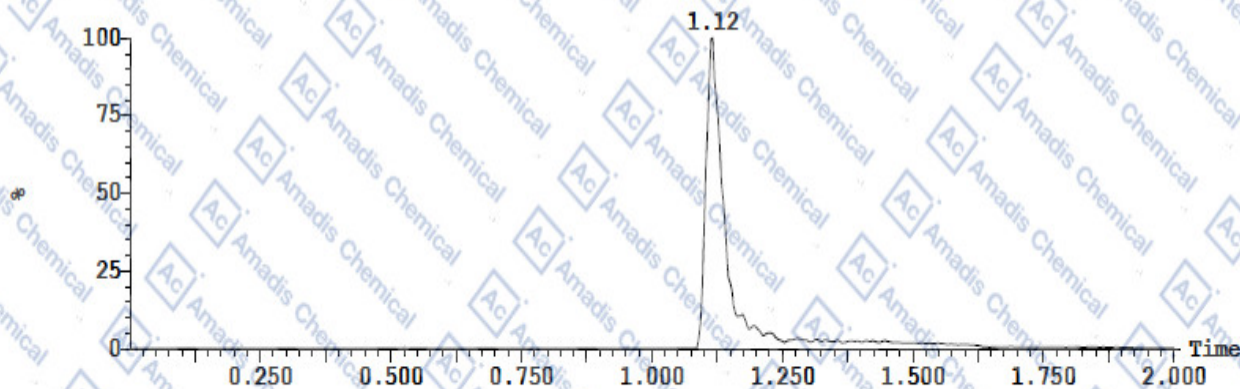


Vial:1:18
Date:20-Mar-2017
MP:C:0.1%FA/H2O D:0.1%FA/ACN Col.:BEH C18:
Method:C:\MassLynx\C95D5+.olp

File:COMPOUND_1
Time:10:31:35
Inlet Method:C95D5
Injection Volume:1.0000

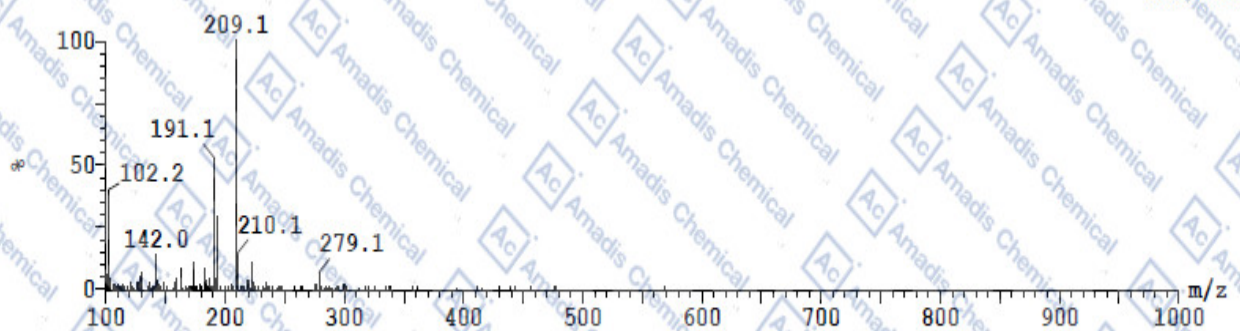
1: MS ES+ :312 1.0000Da Smooth (SG, 2x2)

4.3e+007



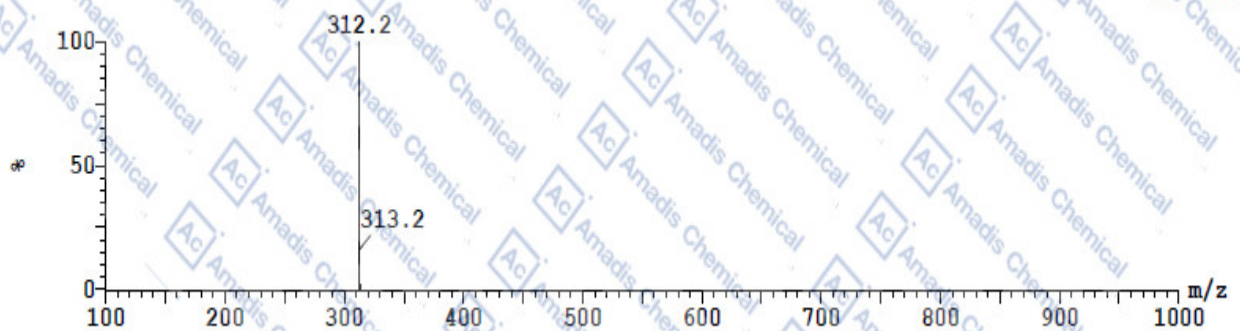
1: (Time: 0.37)

1:MS ES+
1.0e+006



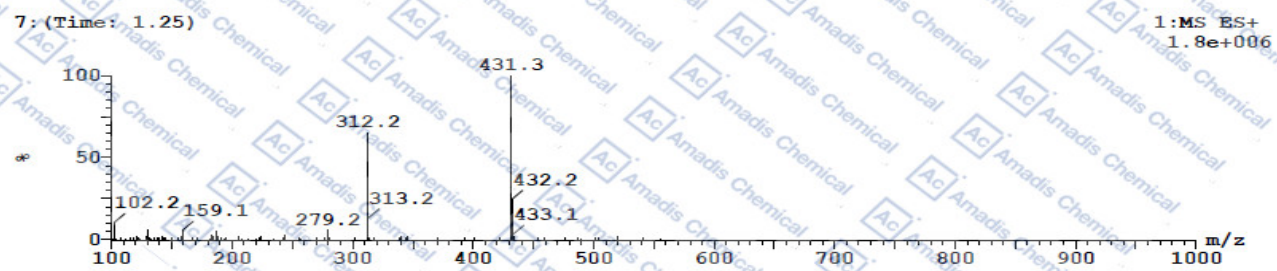
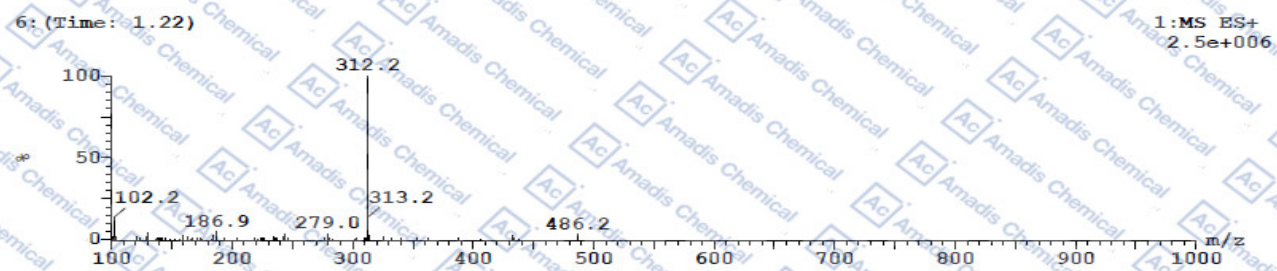
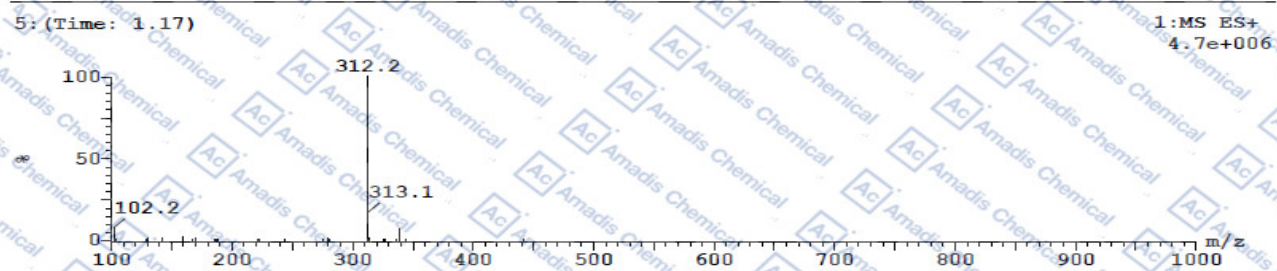
4: (Time: 1.12)

1:MS ES+
4.5e+007



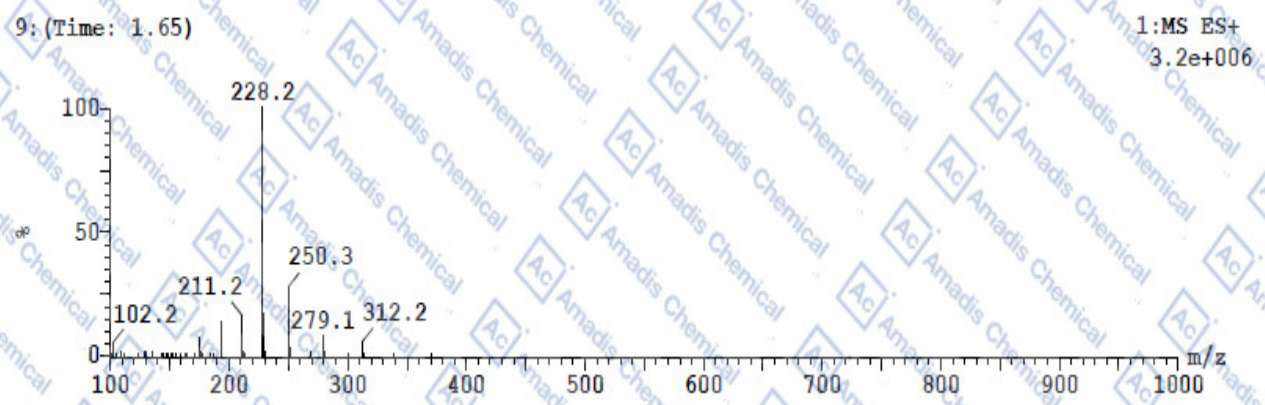
Vial:1:18
Date:20-Mar-2017
MP:C:0.1%FA/H2O D:0.1%FA/ACN Col.:BEH C18
Method:C:\MassLynx\C95D5+.olp

File:COMPOUND 1
Time:10:31:35
Inlet Method:C95D5
Injection Volume:1.0000



Vial:1:18
Date:20-Mar-2017
MP:C:0.1%FA/H2O D:0.1%FA/ACN Col.:BEH C18
Method:C:\MassLynx\C95D5+.olp

File:COMPOUND 1
Time:10:31:35
Inlet Method:C95D5
Injection Volume:1.0000



* If you have any comments and suggestions, please contact us by sales@amadischem.com