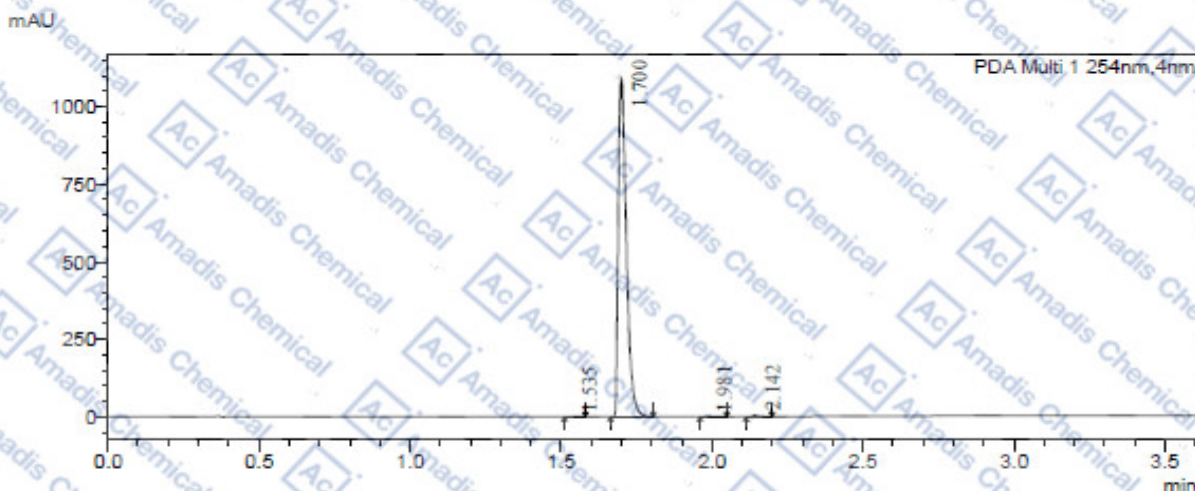


LCMS of 1624602-30-7

Comment : Mobile Phase A:Water/0.05%TFA
 Mobile Phase B:Acetonitrile/0.05%TFA;

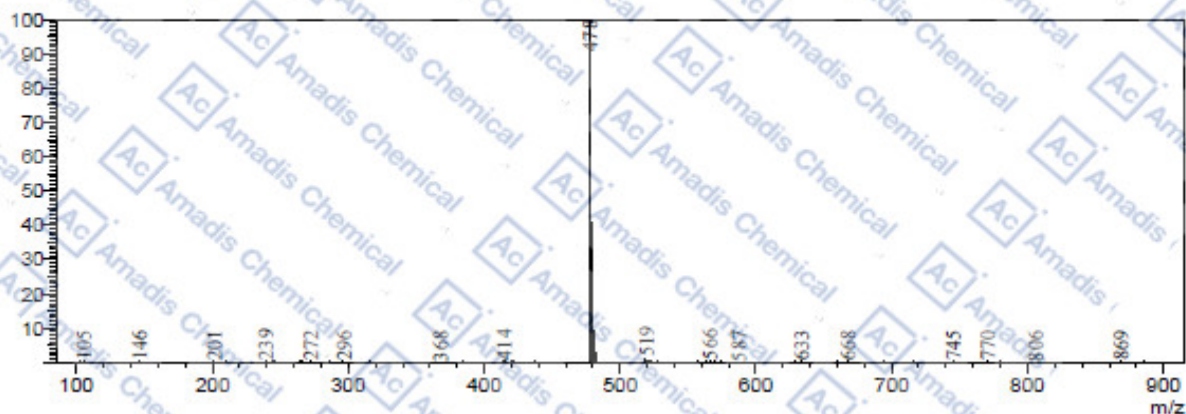
<Chromatogram>



PDA Ch1 254nm

Peak#	Ret. Time	Height	Height%	Area	Area%
1	1.535	936	0.085	1444	0.071
2	1.700	1091509	99.386	2032617	99.504
3	1.981	1410	0.128	2434	0.119
4	2.142	4398	0.400	6263	0.307
Total		1098253	100.000	2042759	100.000

Mass Spectrum



* If you have any comments and suggestions, please contact us by sales@amadischem.com