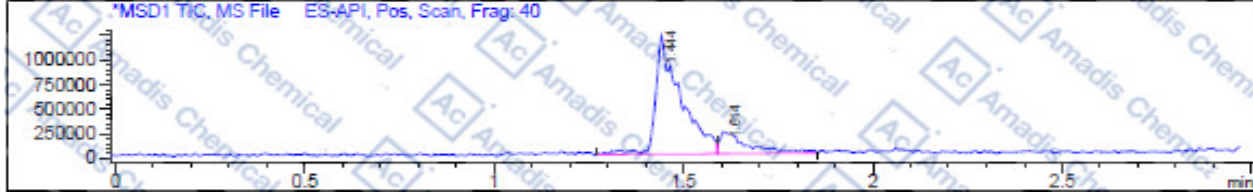
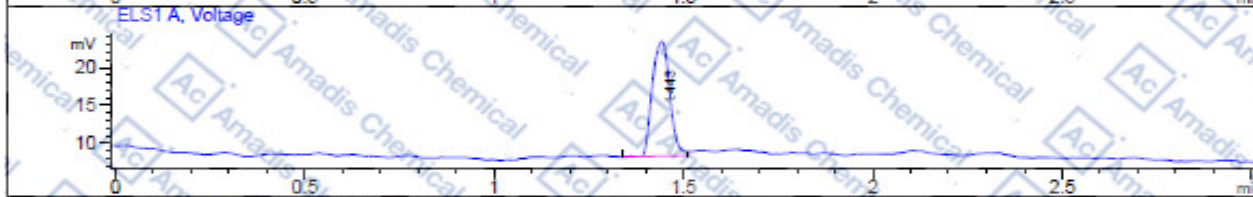
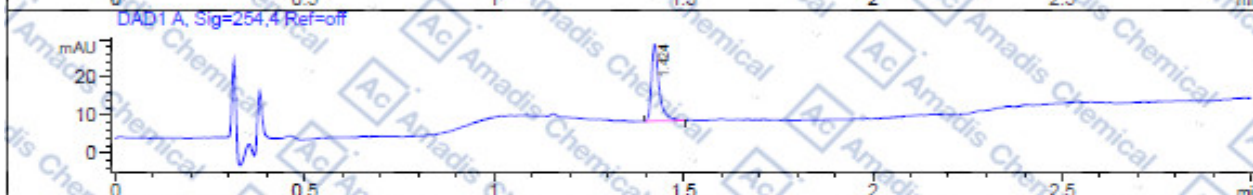
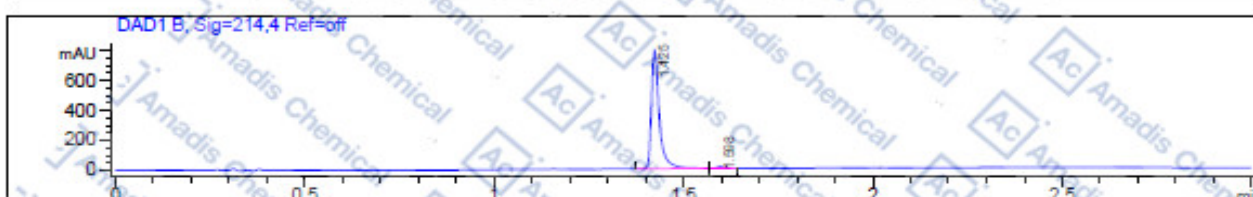


LCMS of 930837-03-9

```

File D:\DATA\BATCCD\MONITOR\930837-03-9-11251-LCMS047.D
Injection Date : 29 Mar 18 12:37 pm +0800      Tgt Mass (EZX) :
Sample Name    : 930837-03-9                  Location   : P1-C-02
Acq. Operator  : BATCCD                       Inj        : 1
Spec. Reported : MS Integration                Inj Volume : 1 ul
Acq. Method    : C:\Chem32\1\METHODS\MONITOR 3MIN-B-P.M
Analysis Method : C:\CHEM32\1\METHODS\MONITOR 3MIN-B-P.M
Sample Info   : Easy-Access Method: 'MONITOR 3MIN-B-P.M'
Method Info   : Column: Waters X Bridge C18: 50mm*4.6 mm*3.5 um;
                Mobile Phase: A: Water (0.01mol/L NH4HCO3) B: ACN
                Gradient : B from 5% to 95% for 1.6 min and hold 95% for 1.4 min;
                Flow rate: 2.0 ml/min;
                Column Temperature: 40 °C
    
```



Integration Results for DAD1 B, Sig=214.4 Ref=off

RetTim	Width	Area	Height	Area%
1.42	0.02	1152.01	792.89	99.06
1.60	0.02	10.92	9.16	0.94

Integration Results for DAD1 A, Sig=254.4 Ref=off

RetTim	Width	Area	Height	Area%
1.42	0.02	28.59	20.18	100.00

Integration Results for ELS1 A, Voltage

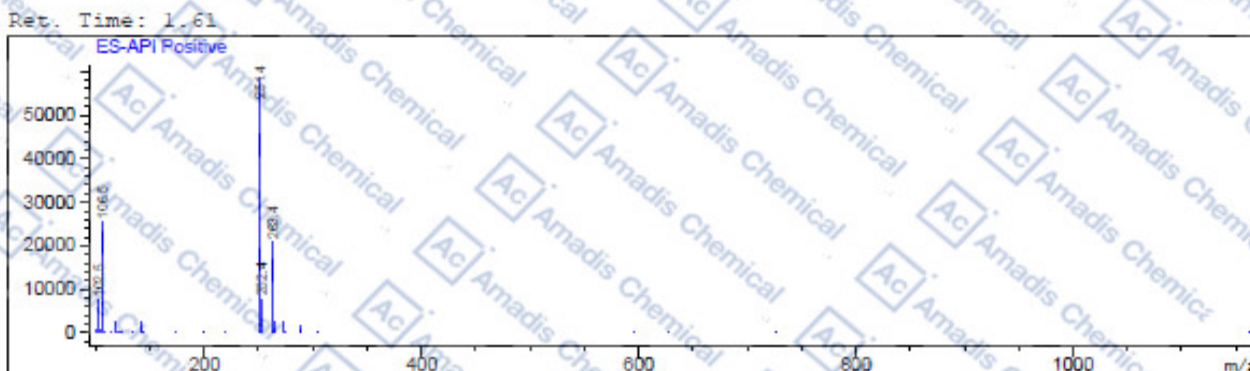
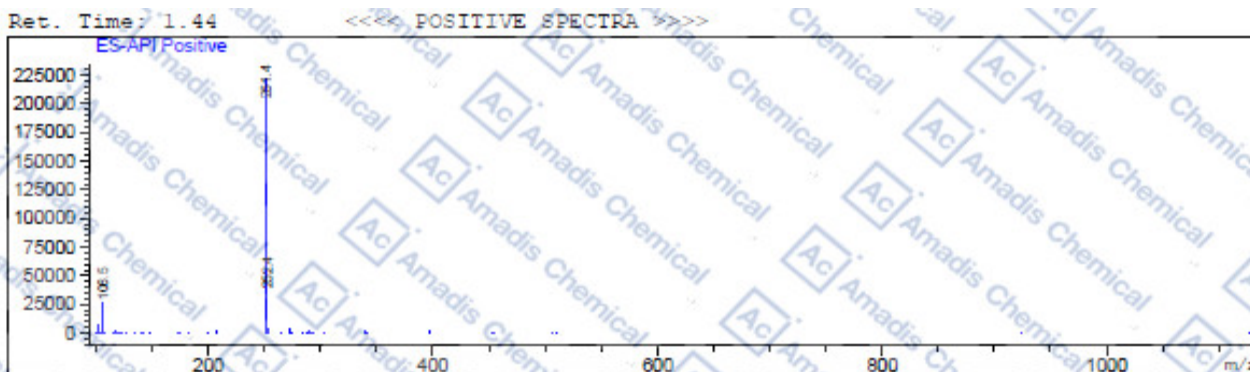
RetTim	Width	Area	Height	Area%
1.44	0.05	48.65	15.17	100.00

Integration Results for MSD1 TIC, MS File

RetTim	Width	Area	Height	Area%
1.44	0.05	48.65	15.17	100.00

1.44	0.06	5630585.00	1207269.00	82.67
1.61	0.08	1180600.00	213739.80	17.33

The main body of the page is filled with a repeating watermark pattern consisting of the text "Amadis Chemical" and the logo "Ac" in a square box, arranged in a diagonal grid.



* If you have any comments and suggestions, please contact us by sales@amadischem.com