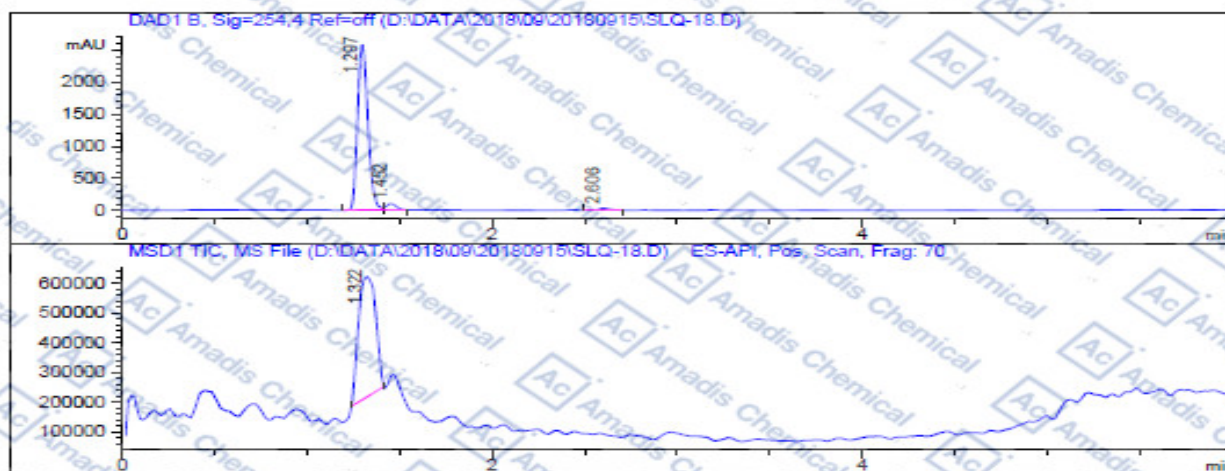


## LCMS of 1614-12-6

Compound Code : 1614-12-6  
 Data File : D:\DATA\2018\09\20180915\SLQ-18.D  
 Injection Date : Sat, 15. Sep. 2018 Inj. Vol. : 1ul  
 Sample Name: 1614-12-6 Location : Vial 2  
 Acq Operator : Inj. No. : 1  
 ChemStation Ver.: B.04.03

Acq. Method : D:\METHODS-20140307-B-ACN\S-10-95-POS.M  
 Analysis Method : D:\METHODS-20140307-B-ACN\G-1-35-POS.M  
 Sample Info.: Column: C18; Column size: 4.6\*50mm; mobile phase: B (ACN), A (0.1% TFA in water); gradient B as Acq.Method above

Instrument Info: Agilent 1260 HPLC and 6120 MSD



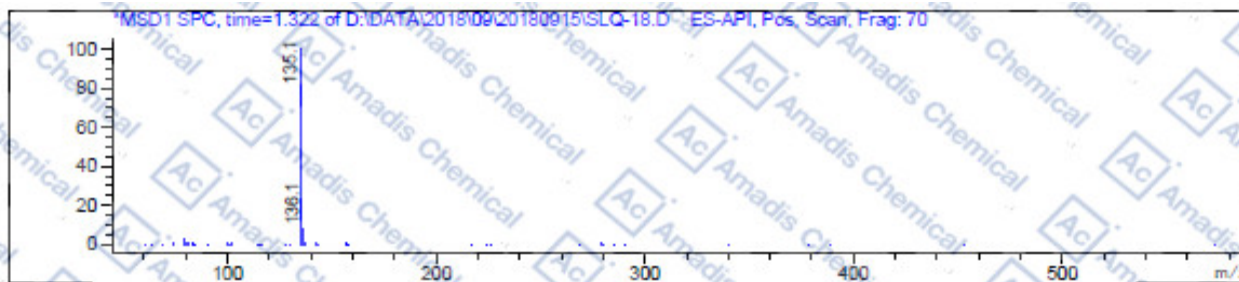
### Integration Results

Signal 1: DAD1 B, Sig=254,4 Ref=off

#	R.T.	Type	Height	Height%	Width	Area	Area %
1	1.297	MF	2597.185	95.211	0.064	10047.550	95.338
2	1.452	FM	97.749	3.583	0.061	358.678	3.403
3	2.606	MM	32.887	1.206	0.067	132.686	1.259

Signal 2: MSD1 TIC, MS File

#	R.T.	Type	Height	Height%	Width	Area	Area %
1	1.322	MM	409302.906	100.000	0.106	2.615e+006	100.000



\* if you have any comments and suggestions, please contact us by [sales@amadischem.com](mailto:sales@amadischem.com)