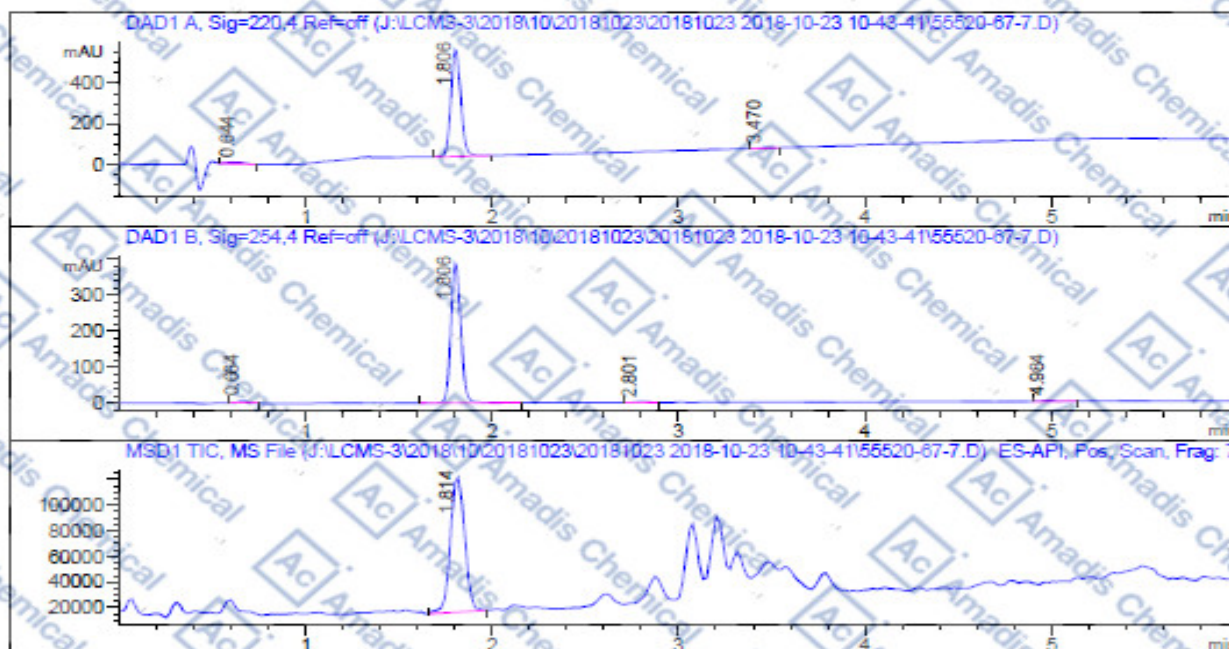


### LCMS of 55520-67-7

Compound Code : 55520-67-7  
 Data File : J:\LCMS-3\2018\10\20181023\20181023 2018-10-23 10-43-4->  
 Injection Date : Tue, 23. Oct. 2018 Inj. Vol. : 1ul  
 Sample Name : 55520-67-7 Location : P1-B-02  
 Acq Operator : SYSTEM Inj. No. : 1  
 ChemStation Ver.: B.04.03

Acq. Method : D:\DATA\2018\10\20181023\20181023 2018-10-23 10-43-41->  
 Analysis Method : D:\CHEM32\1\METHODS\DEF\LC.M  
 Sample Info: Column:C18;Column size:4.6\*50mm;mobile phase:B(ACN),A(0.1% TFA in water);gradient B as Acq.Method above

Instrument Info: Agilent 1260 HPLC and 6120 MSD



Integration Results

Signal 1: DAD1 A, Sig=220,4 Ref=off

#	R.T.	Type	Height	Height%	Width	Area	Area %
1	0.644	MM	8.936	1.661	0.100	53.482	2.726
2	1.806	MM	525.561	97.695	0.060	1895.135	96.596

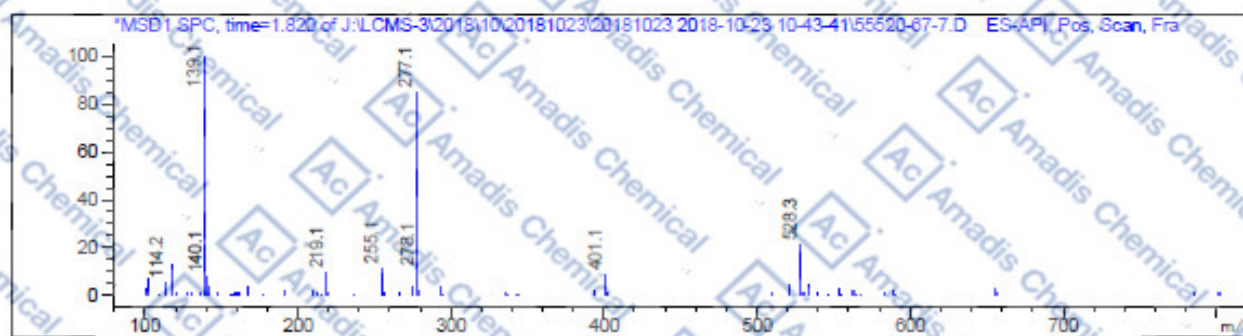
#	R.T.	Type	Height	Height%	Width	Area	Area %
3	3.470	MM	3.466	0.644	0.064	13.302	0.678

Signal 2: DAD1 B, Sig=254.4 Ref=off

#	R.T.	Type	Height	Height%	Width	Area	Area %
1	0.664	MM	0.611	1.899	0.056	22.800	1.557
2	1.806	BB	389.292	97.128	0.056	1414.382	98.614
3	2.801	MM	2.314	0.577	0.062	8.594	0.587
4	4.984	MM	2.397	0.598	0.126	18.168	1.241

Signal 3: MSD1 TIC, MS File

#	R.T.	Type	Height	Height%	Width	Area	Area %
1	1.814	BB	105860.602	100.000	0.084	560246.188	100.000



\*\*\* End of Report \*\*\*

\* If you have any comments and suggestions, please contact us by [sales@amadischem.com](mailto:sales@amadischem.com)