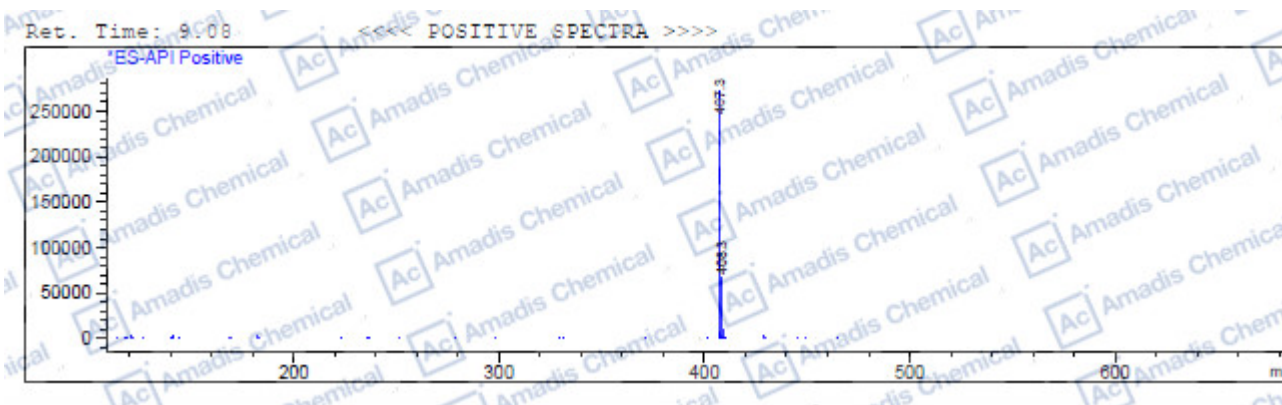
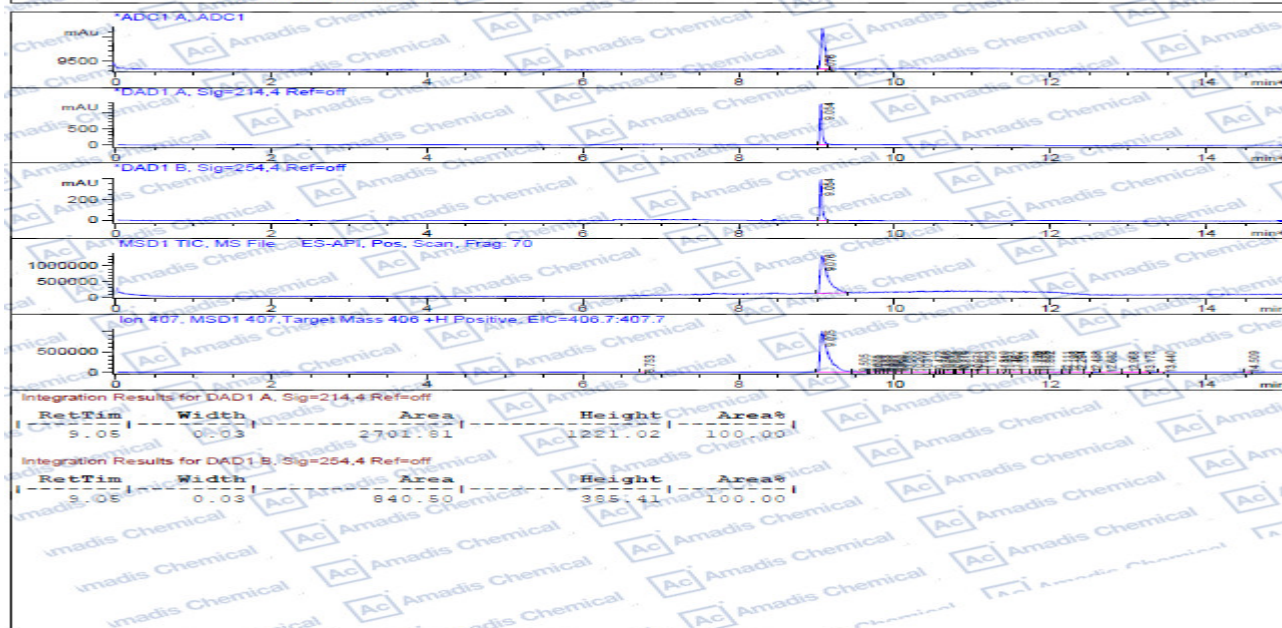


LCMS of 1454846-35-5

```

File D:\DATA\A02\MONITOR\RS-3922-31755-LCMSA043.D
Injection Date : 4 Dec 17 9:17 am +0800 Tgt Mass (BZX) : 406.00
Sample Name : RS-3922 Location : P1-D-02
Acq. Operator : LCMSA018 Inj : 1
Spec. Reported : MS Integration Inj Volume : 1 ul
Acq. Method : C:\CHEM32\1\METHODS\2-HPLC-15MIN.M
Analysis Method : C:\CHEM32\1\METHODS\2-HPLC-15MIN.M
Sample Info : Easy-Access Method: '2-HPLC-15MIN' 406.00
Method Info : Mobile Phase: A: water(10mM Ammonium hydrogen carbonate) B: ACN
Gradient: 0min 5%B, 2min 5%B, 10min 95%B, 15min 95% B
Flow Rate: 1.0ml/min
Column: XBridge C18, 4.6*150mm, 3.5um
Oven Temperature: 35 C
MASS Range: 110-800
    
```



* if you have any comments and suggestions, please contact us by sales@amadischem.com