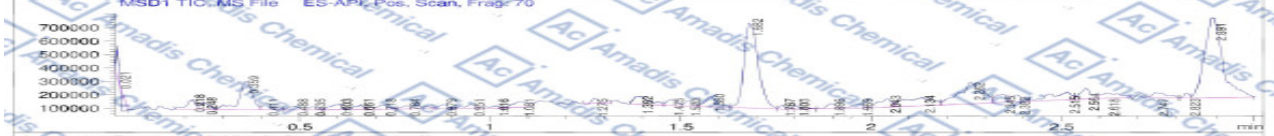
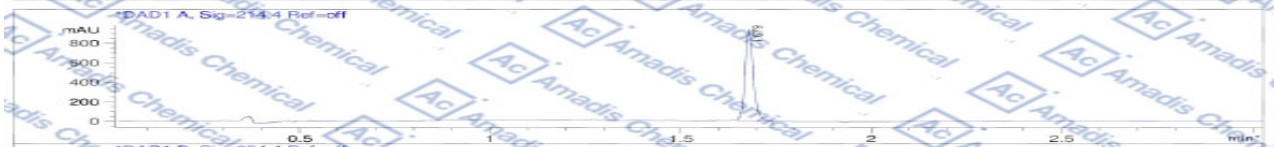


LCMS of 863971-19-1

```

File D:\DATA\LCMS_863971-19-1.D
Injection Date : 28 Jan 19 15:27 pm +0800          Tgt. Mass (EZK)
Sample Name : LCMS_863971-19-1                    Location : P1-F-02
Acq. Operator :                                  Inj : 1
Spec. Reported : MS Integration                    Inj Volume : 10 ul
Acq. Method : D:\METHODS\1-POS-3MIN-MS1500.M
Analysis Method : D:\METHODS\1-POS-3MIN-MS1500.M
Sample Info : Easy-Access Method: 1-POS-3min-MS1500
Method Info : Mobile Phase: A: water (0.01%TFA) B: ACN(0.01%TFA)
Gradient: 5%-95% B in 1.2min
Flow Rate: 2ml/min
Column: SunFire C18, 4.6*50mm, 3.5um
Oven Temperature: 50 C
Mass Range: 110-1500
    
```

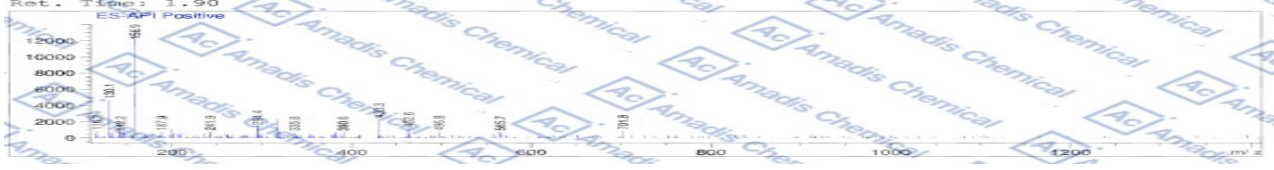
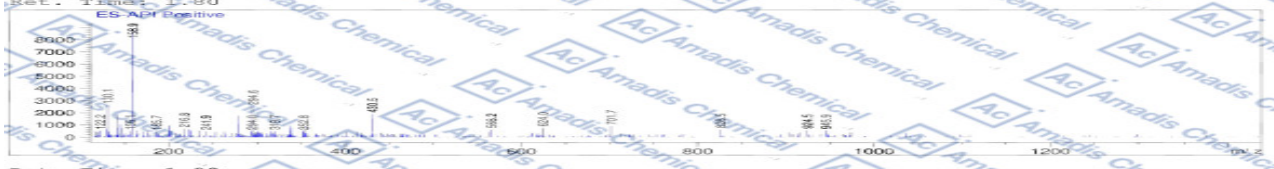
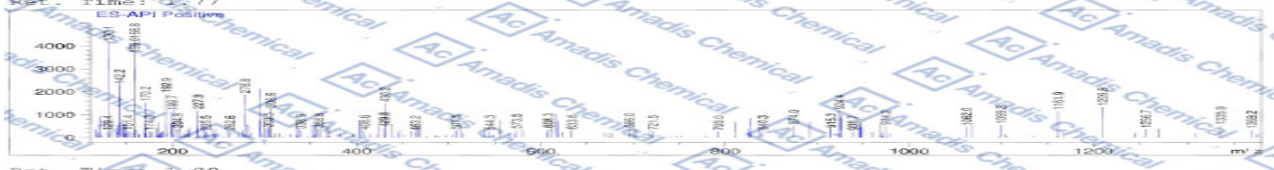


Integration Results for DAD1 A, Sig=214.4 Ref=off

RetTime	Width	Area	Height	Area%
1.68	0.03	1427.94	931.48	100.00

Integration Results for DAD1 B, Sig=254.4 Ref=off

RetTime	Width	Area	Height	Area%
1.68	0.02	10.99	8.92	100.00



* If you have any comments and suggestions, please contact us by sales@amadischem.com