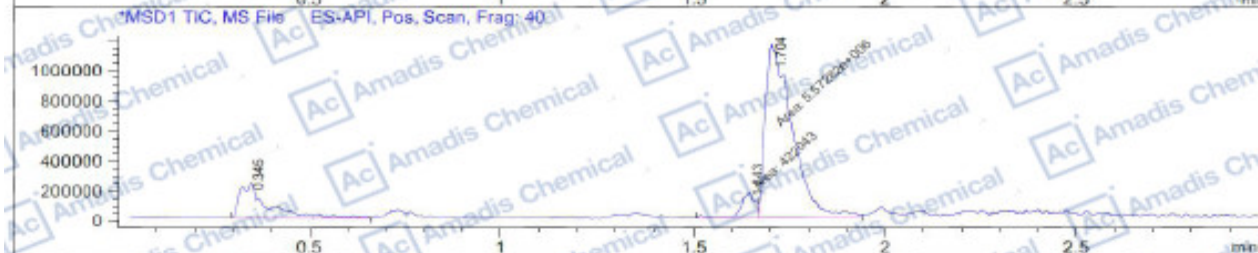
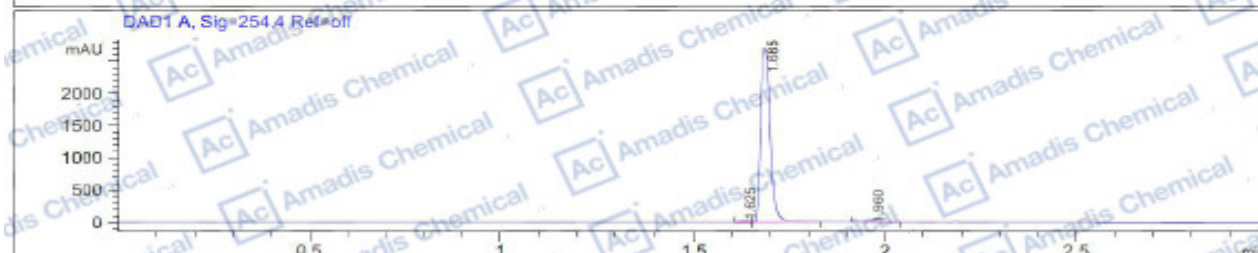


### LCMS of 1346242-81-6

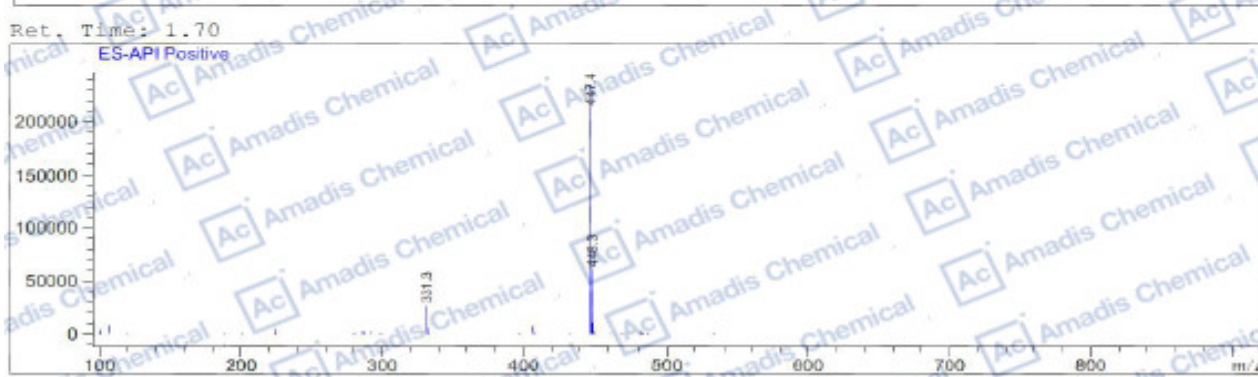
```

File D:\DATA\BATCCD\MONITOR\190225-10946-INSTRUMENT 1.D
Injection Date : 28 Feb 19  4:47 pm +0800      Tgt Mass (EZX) :
Sample Name    : 190225                        Location   : Vial 17
Acq. Operator  : BATCCD                        Inj       : 1
Spec. Reported : MS Integration                Inj Volume: 1 ul
Acq. Method    : C:\Chem32\1\METHODS\MONITOR 3MIN-B-P.M
Analysis Method : C:\CHEM32\1\METHODS\MONITOR 3MIN-B-P.M
Sample Info   : Easy-Access Method: 'MONITOR 3MIN-B-P.M'
Method Info   : Column: Waters X Bridge C18: 50mm*4.6 mm*3.5 um;
Mobile Phase  : A: Water (0.01mol/L NH4HCO3)  B: ACN
Gradient      : B from 5% to 100% for 1.6 min and hold 100% for 1.4 min;
Flow rate     : 2.0 ml/min;
Column Temperature: 40 °C
    
```



Integration Results for DAD1 A, Sig=254.4 Ref=off

RetTime	Width	Area	Height	Area%
1.62	0.02	49.67	42.23	0.99
1.68	0.03	4976.70	2637.86	98.75
1.96	0.03	13.34	6.75	0.26



\*If you have any comments and suggestions, please contact us by [sales@amadischem.com](mailto:sales@amadischem.com)