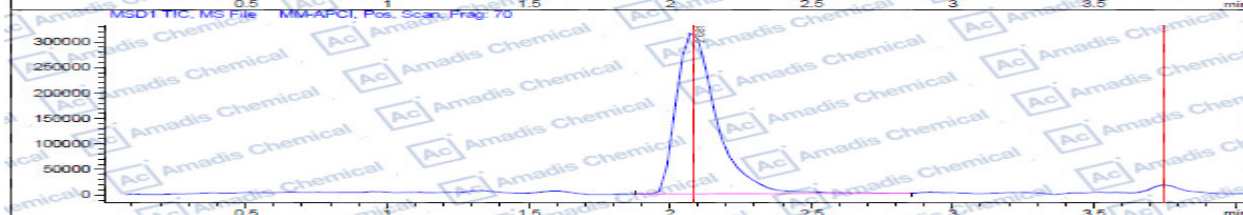
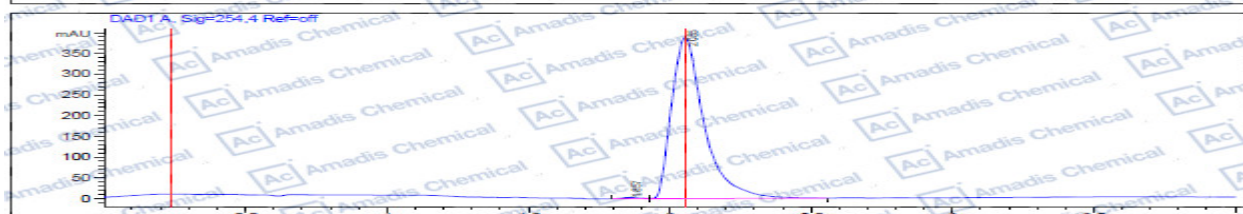


### LCMS of 1261113-96-5

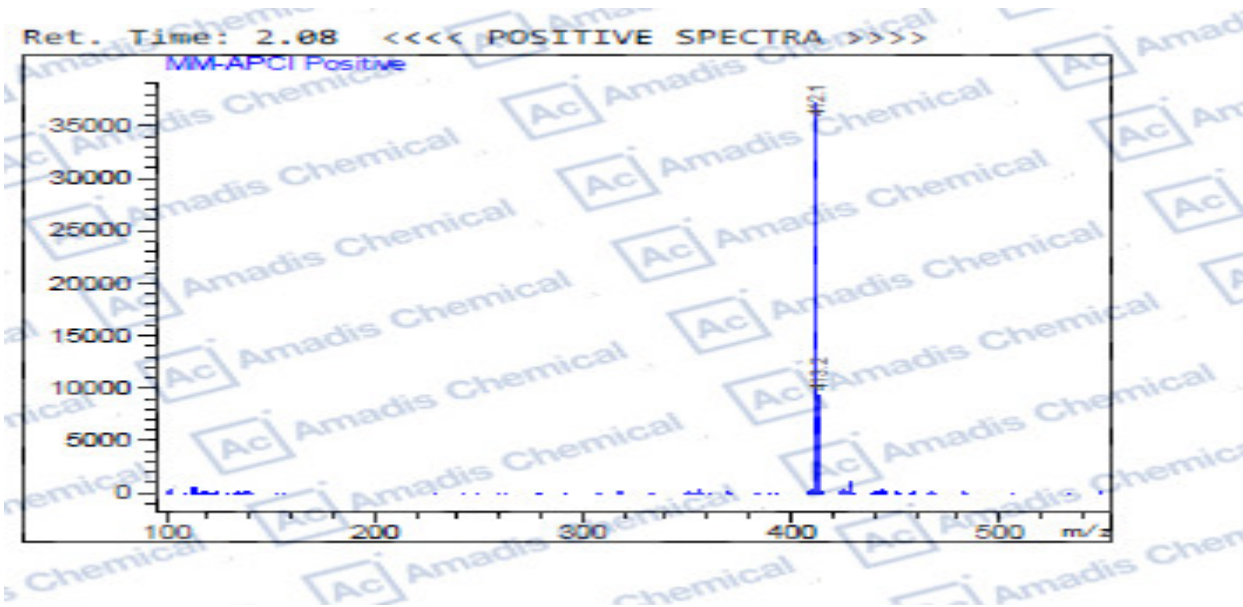
```

File D:\EXDATA\INSTRUMENT 1\MYC-0621-A2-70787.D
Injection Date : 21-Jun-18 17:46:55          Tgt Mass (S2X) :
Sample Name    : myc-0621-a2                Location      : P2-C-02
Acq. Operator  : System Administrator        Inj           : 0
Spec. Reported : MS Integration              Inj Volume    : 1 ul
Acq. Method    : C:\Chem32\1\METHODS\STD-5MIN-POS (COLUMN-2-APCI).M
Analysis Method : C:\CHEM32\1\METHODS\STD-5MIN-POS (COLUMN-2).M
Sample Info    : Easy-Access Method: STD-5MIN-POS (Column-2-APCI) mol wt 2:
Method Info    : text samples                mol wt3:
  
```



Integration Results for DAD1 A, Sig=254.4 Ref=off

RetTime	Width	Height	Area%
1.99	0.06	12.12	0.39
2.08	0.12	3097.50	99.61



\* If you have any comments and suggestions, please contact us by [sales@amadischem.com](mailto:sales@amadischem.com)