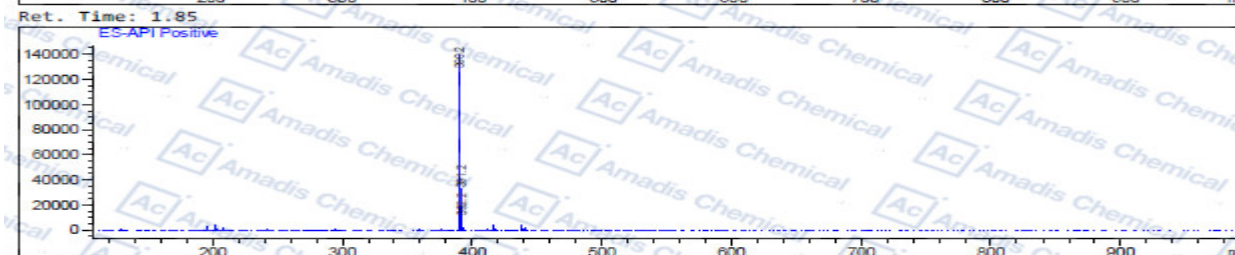
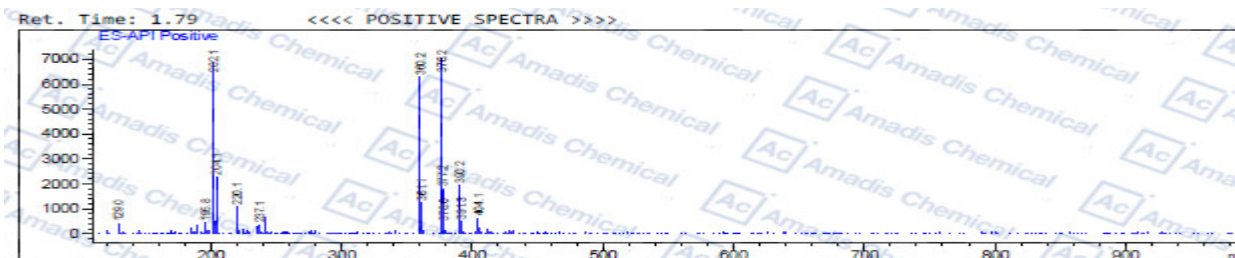
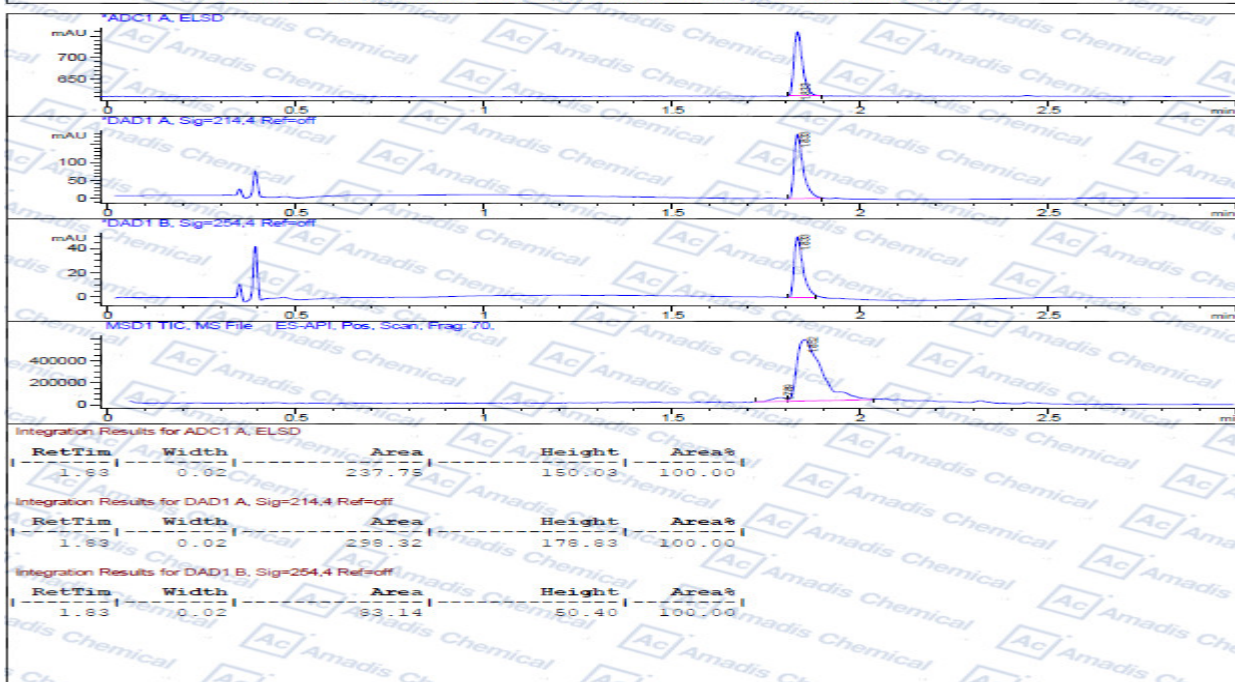


## LCMS of 1401090-53-6

Injection Date : 28 May 19 1:47 pm +0800  
 Sample Name : gen-TM  
 Acq. Operator : ydy  
 Spec. Reported : MS Integration  
 Acq. Method : E\1-POS-3MIN.M  
 Analysis Method : E\1-POS-3MIN.M  
 Sample Info : Easy-Access Method: '1-POS-3MIN.M'  
 Method Info : Mobile Phase: A:Water(10mM NH4HCO3) B:ACN  
 Gradient: 5% increase to 95%B within 1.4min, 95%B for 1.6min.  
 Flow Rate: 1.0ml/min  
 Column: XBridge C18, 4.6\*50mm, 3.5um  
 Column Temperature: 45 C  
 Detection: UV(214,4nm) and MS(ESI,Neg mode,110 to 1000 amu)



\*If you have any comments and suggestions, please contact us by [sales@amadischem.com](mailto:sales@amadischem.com)