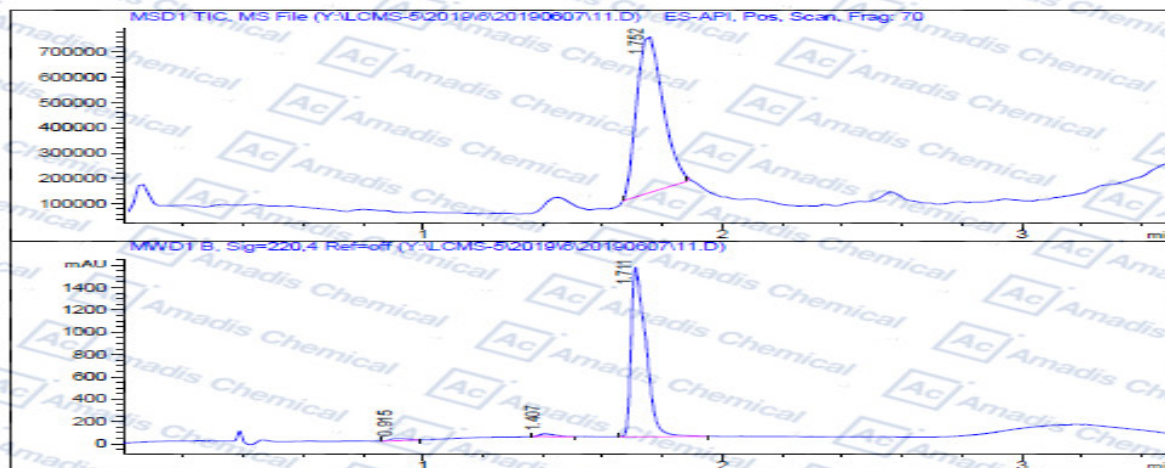


LCMS of 815610-16-3

Compound Code : CAS#815610-16-3
 Data File : Y:\LCMS-5\2019\6\20190607\CAS#815610-16-3.D
 Injection Date : Fri, 7 Jun 2019 Inj. Vol. : 1ul
 Sample Name : CAS#815610-16-3 Location: 样品瓶 2
 Acq Operator : SYS Inj. No. : 1
 ChemStation Ver.: B.08.02
 Acq. Method : D:\METHODS-201505-A-ACN\G-10-95-POS.M
 Analysis Method : D:\CHEM32\1\METHODS\DGLEAKT.M
 Sample Info.: CAS#815610-16-3
 Pump/leak test method



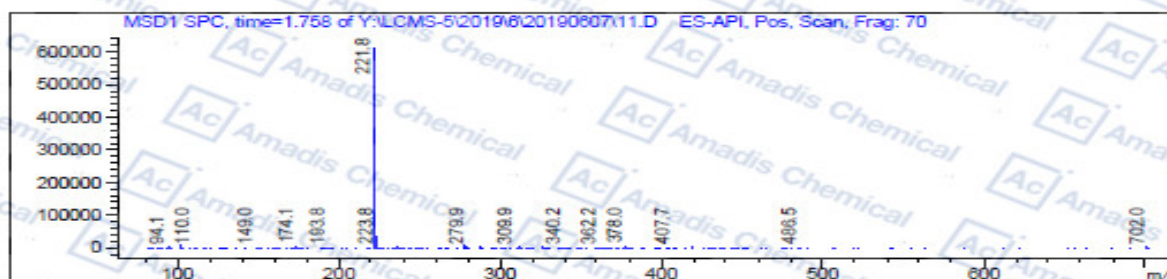
Integration Results

Signal 1: MSD1 TIC, MS File

#	R.T.	Type	Height	Height%	Width	Area	Area %
1	1.752	MM	628547.188	100.000	0.100	3.757e+006	100.000

Signal 2: MWD1 B, Sig=220.4 Ref=off

#	R.T.	Type	Height	Height%	Width	Area	Area %
1	0.915	MM	19.095	1.225	0.074	84.427	1.576
2	1.407	MM	26.414	1.695	0.063	99.513	1.857
3	1.711	MM	1512.951	97.080	0.057	5173.615	96.567



*** End of Report ***

* if you have any comments and suggestions, please contact us by sales@amadischem.com