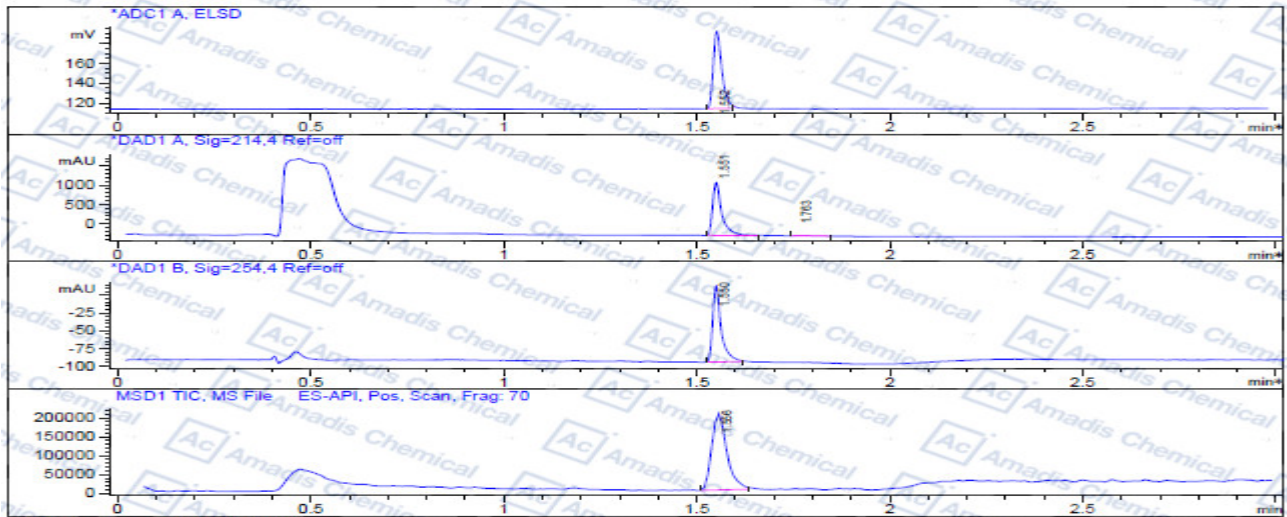


LCMS of 329773-35-5

```

File D:\DATA\565.D
Injection Date : 28 Jul 19 7:46 pm +0800      Tgt Mass (EZX) :
Sample Name    : 565                          Location    : P2-A-09
Acq. Operator  : 1                            Inj        : 1
Spec. Reported : MS Integration                Inj Volume : 1 ul
Acq. Method    : D:\METHODS\1-POS-3MIN.M
Analysis Method : D:\METHODS\1-POS-3MIN.M
Sample Info    : Easy-Access Method: '1-POS-3MIN'
Method Info    : Mobile Phase : A:water(0.01%TFA) B:ACN(0.01%TFA)
                  Gradient:5% increase to 95%B within 1.3min,95%B for 1.7min
                  Flow Rate :2ml/min
                  Column :Sunfire, 50*4.6mm,3.5um
                  Column Temperature:50C
                  Detection:UV(214,4nm) and MS(ESI,Pos mode,110 to 1000 amu)
    
```



Integration Results for ADC1 A, ELSD

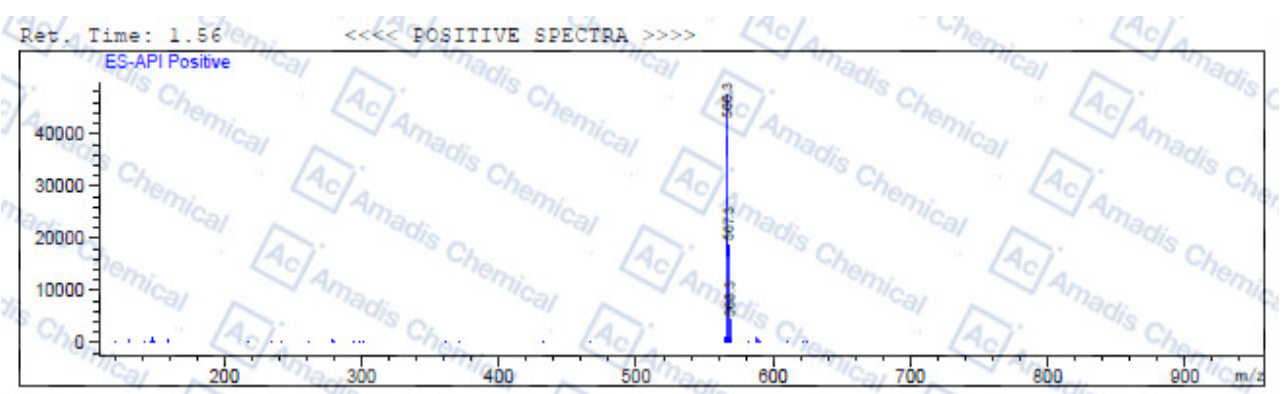
RetTim	Width	Area	Height	Area%
1.56	0.02	120.54	78.02	100.00

Integration Results for DAD1 A, Sig=214.4 Ref=off

RetTim	Width	Area	Height	Area%
1.56	0.02	2271.93	1371.28	99.06
1.76	0.04	21.55	6.52	0.94

Integration Results for DAD1 B, Sig=254.4 Ref=off

RetTim	Width	Area	Height	Area%
1.56	0.02	165.80	107.73	100.00



* if you have any comments and suggestions, please contact us by sales@amadischem.com