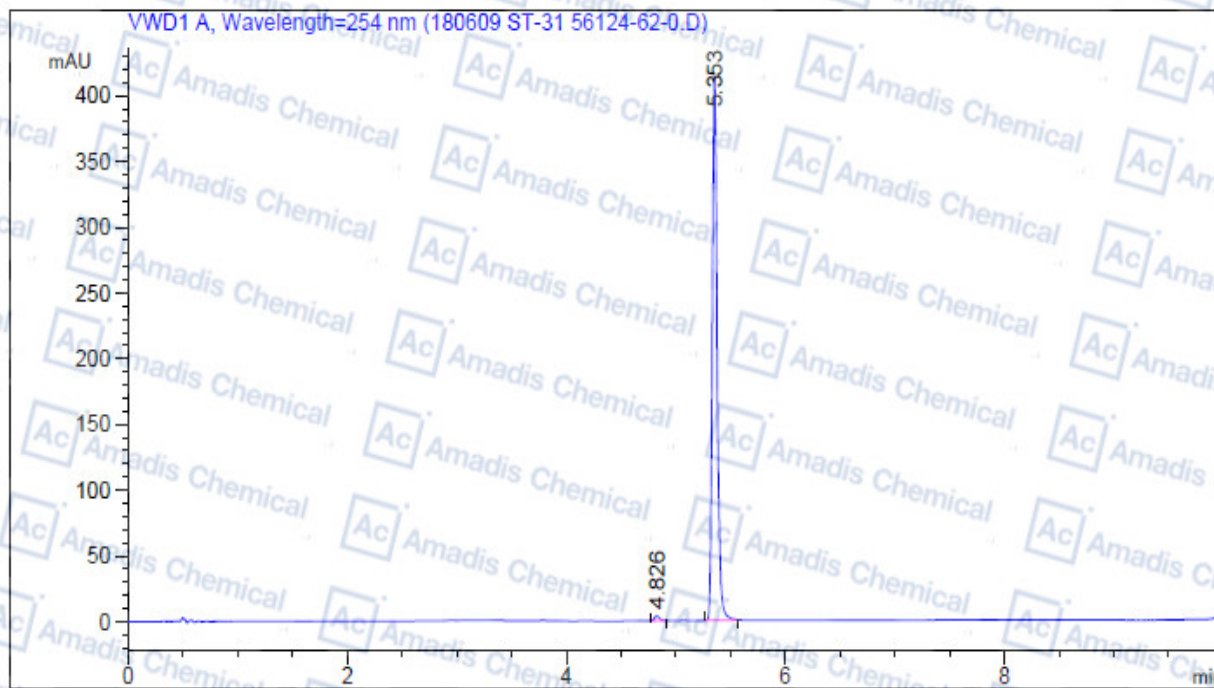


### HPLC of 926037-48-1



=====  
**Area Percent Report**  
 =====

Sorted By : signal  
 Multiplier: : 1.0000  
 Dilution: : 1.0000  
 Use Multiplier & Dilution Factor with ISTDs

Signal 1: VWD1 A, Wavelength=254 nm

Peak #	RetTime [min]	Type	Width [min]	Area mAU*s	Height [mAU]	Area %
1	4.826	BB	0.0501	11.63736	3.52987	0.8995
2	5.353	BB	0.0471	1282.16077	413.74646	99.1005

Totals : 1293.79812 417.27633

=====  
 \*\*\* End of Report \*\*\*  
 =====

\*if you have any comments and suggestions, please contact us by [sales@amadischem.com](mailto:sales@amadischem.com)