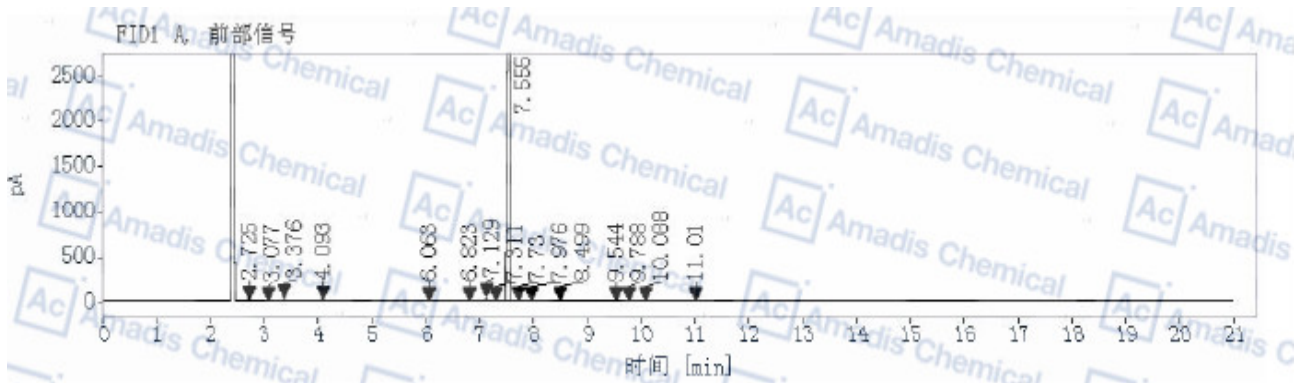


GC of 454482-11-2



FID1 A, 前部信号

| 保留时间 [分钟] | 类型 | 峰宽 [分钟] | 峰面积 | 峰高 | 面积% |
|-----------|----|---------|------------|-----------|---------|
| 2.725 | MM | 0.0196 | 17.3328 | 14.7447 | 0.1095 |
| 3.077 | MM | 0.0259 | 2.2885 | 1.4703 | 0.0145 |
| 3.376 | MM | 0.0212 | 29.6542 | 23.2987 | 0.1873 |
| 4.093 | MM | 0.0402 | 27.7803 | 11.5087 | 0.1755 |
| 6.063 | MM | 0.0474 | 1.3515 | 0.4754 | 0.0085 |
| 6.823 | MM | 0.0344 | 0.5540 | 0.2682 | 0.0035 |
| 7.129 | BB | 0.0203 | 47.1068 | 37.3796 | 0.2975 |
| 7.311 | MF | 0.0657 | 4.1274 | 1.0466 | 0.0261 |
| 7.555 | FM | 0.0409 | 15679.2881 | 6385.6899 | 99.0282 |
| 7.730 | MF | 0.0746 | 4.1040 | 0.9170 | 0.0259 |
| 7.976 | FM | 0.0752 | 3.4213 | 0.7584 | 0.0216 |
| 8.499 | MM | 0.1411 | 4.3991 | 0.5197 | 0.0278 |
| 9.544 | MM | 0.0303 | 0.5358 | 0.2944 | 0.0034 |
| 9.788 | MM | 0.0233 | 6.4612 | 4.6306 | 0.0408 |
| 10.088 | MM | 0.0380 | 1.8630 | 0.8181 | 0.0118 |
| 11.010 | MM | 0.1584 | 2.8817 | 0.3033 | 0.0182 |
| | 总和 | | 15833.1496 | | |

*if you have any comments and suggestions, please contact us by sales@amadischem.com