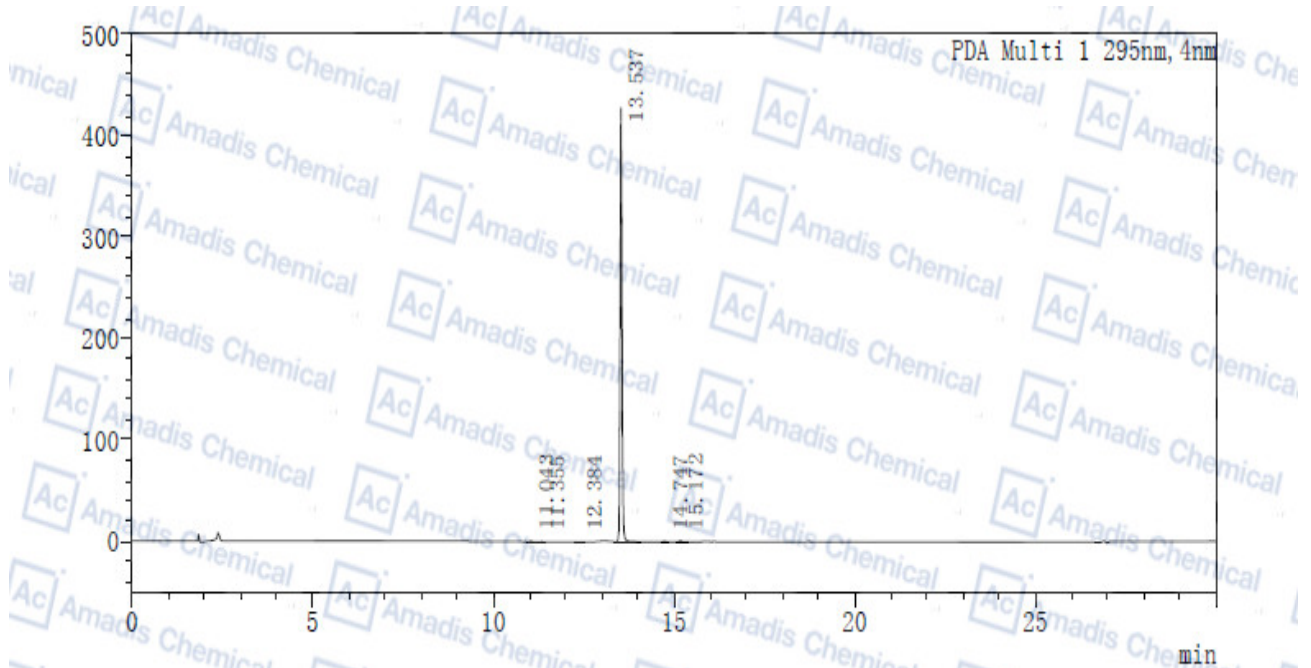


HPLC of 1228690-36-5



峰表

PDA Ch1 295nm

峰号	保留时间	面积	高度	面积%
1	11.043	1856	557	0.118
2	11.355	520	167	0.033
3	12.384	1014	216	0.064
4	13.537	1566261	427971	99.424
5	14.747	1521	396	0.097
6	15.172	4168	873	0.265
总计		1575339	430180	100.000

*if you have any comments and suggestions, please contact us by sales@amadischem.com