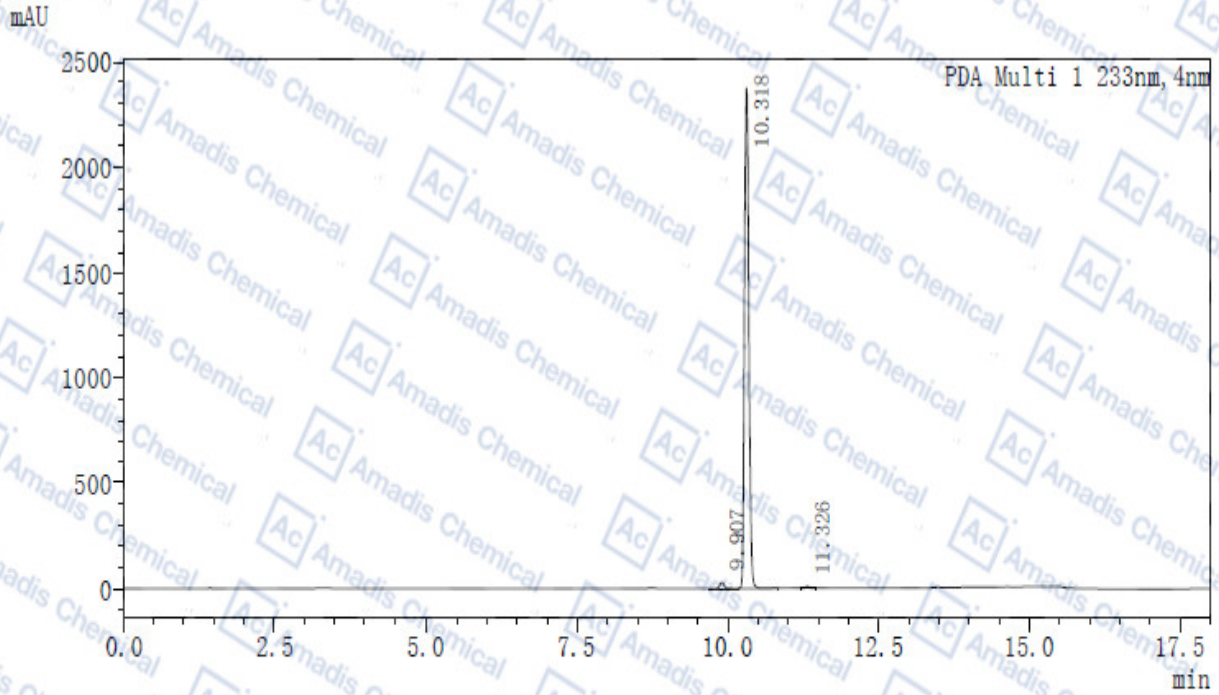


HPLC of 146796-02-3

〈色谱图〉



〈峰表〉

PDA Ch1 233nm

峰号	保留时间	面积	高度	面积%
1	9.907	134423	28019	1.110
2	10.318	11947245	2375260	98.617
3	11.326	33082	7536	0.273
总计		12114749	2410815	100.000

*For R&D use only

*if you have any comments and suggestions, please contact us by sales@amadischem.com