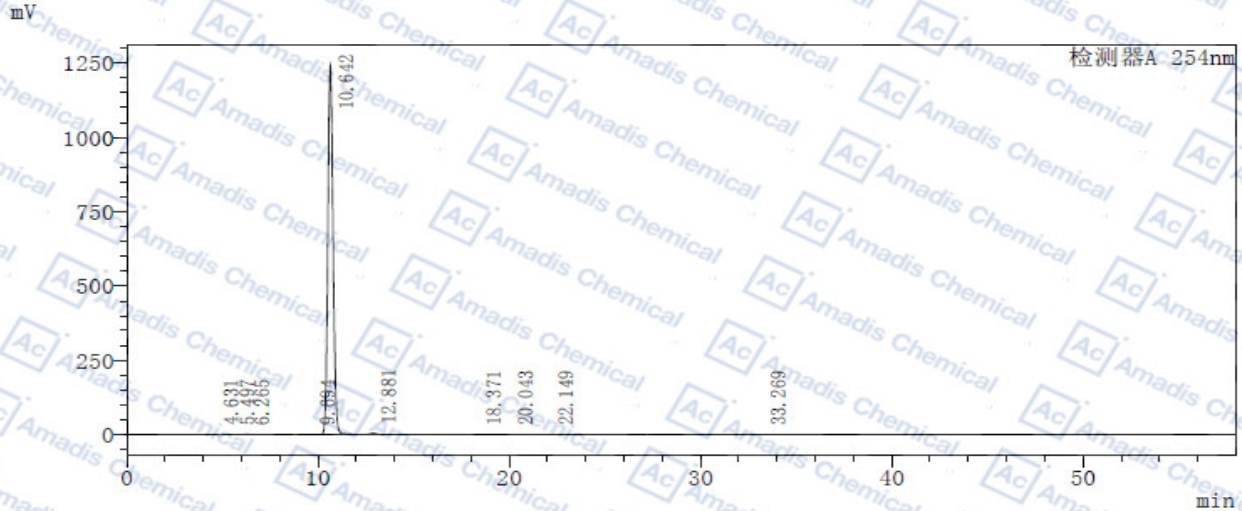


HPLC of 1936437-58-9

<色谱图>



<峰表>

检测器A 254nm

峰号	保留时间	面积	高度	标记	面积%
1	4.631	14793	955	M	0.062
2	5.497	16045	1253	M	0.067
3	6.265	26832	1976		0.113
4	9.694	113	12	M	0.000
5	10.642	23613020	1240769	S	99.262
6	12.881	99023	4492	T	0.416
7	18.371	1875	85		0.008
8	20.043	555	25	M	0.002
9	22.149	5631	216		0.024
10	33.269	10688	190	M	0.045
总计		23788576	1249972		100.000

*For R&D use only

*if you have any comments and suggestions, please contact us by sales@amadischem.com