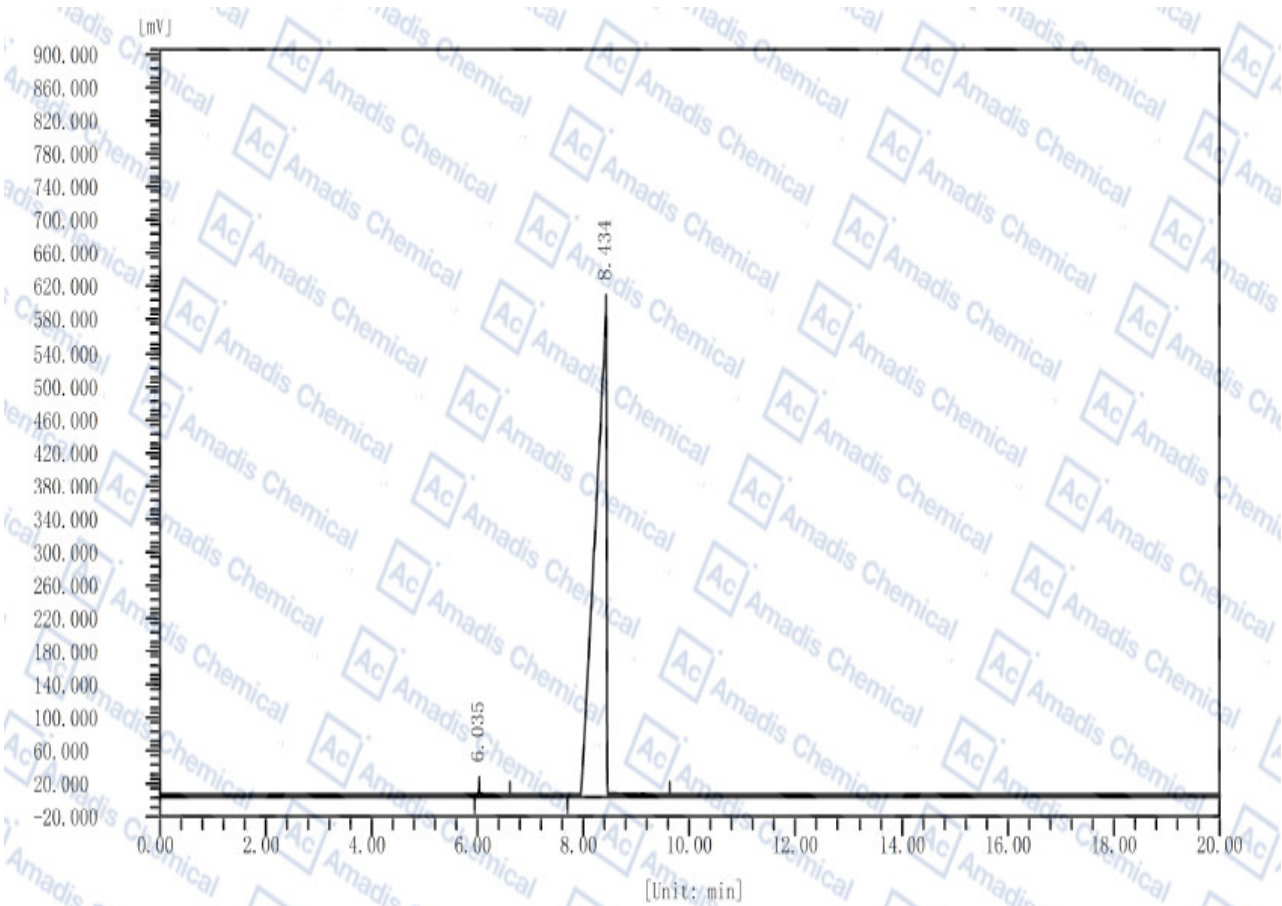


GC of 643-28-7



分析结果

| 峰序 | 组分名 | 保留时间 [min] | 半峰宽 [min] | 峰高 [uV] | 峰面积 [uV*s] | 峰面积 [%] | 含量 [%] | 峰类型 |
|-----|-----|---------------|--------------|------------|---------------|------------|-----------|-----|
| 1 | | 6.035 | 0.057 | 5875.9 | 22137.7 | 0.2556 | 0.2556 | BB |
| 2 | | 8.434 | 0.246 | 586893.4 | 8640025.6 | 99.7444 | 99.7444 | BB |
| 总计: | | | | 592769.3 | 8662163.1 | 100.0000 | 100.0000 | |

*For R&D use only

*if you have any comments and suggestions, please contact us by sales@amadischem.com